

Prepared by: Erdman Engineering, P.C., 708 Commerce Drive, P.O. Box 246, Decorah, Iowa 52101 (563) 382-4194

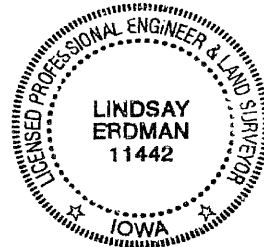
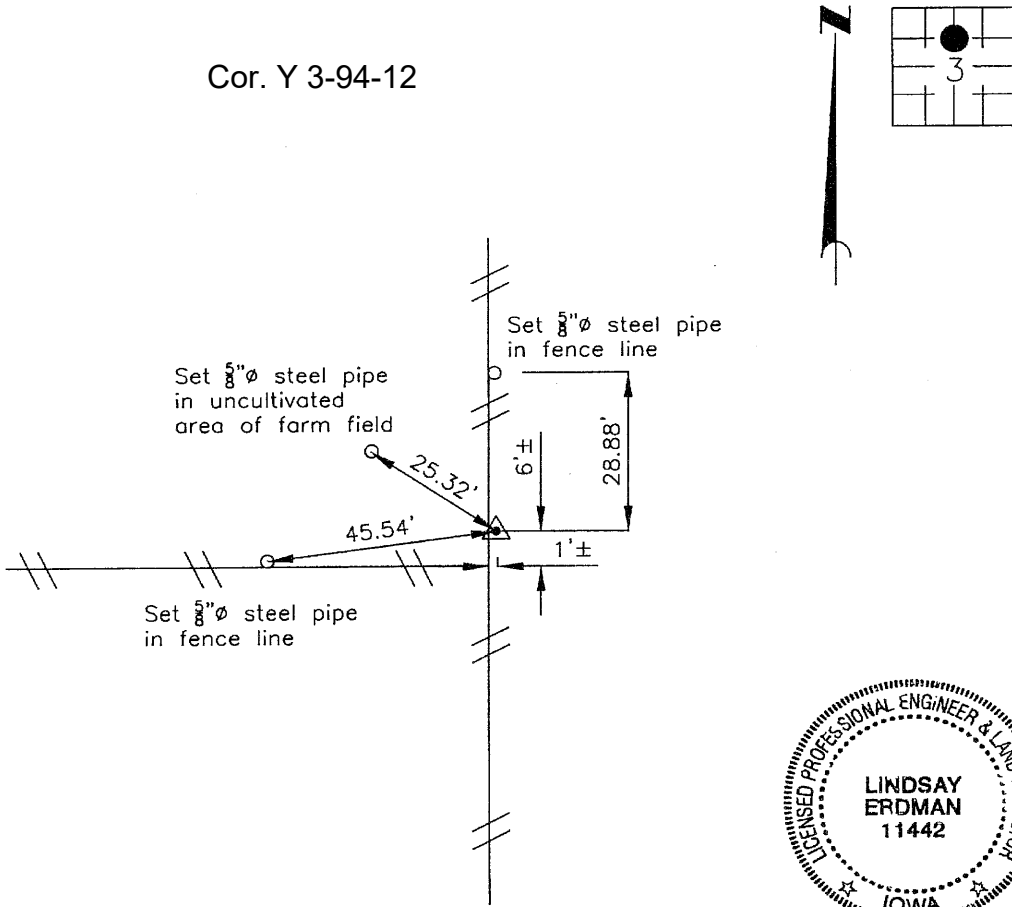
United States Public Land Survey Corner Certificate
 of

Land Survey Monuments situated in Section 3, Township 94, Range 12 West of the 5th Principal Meridian in Chickasaw County, Iowa. Previously recorded in does not apply in the county Recorder's Office.

Monument Description and Remarks: This certificate is prepared in accordance with Section 193C of the Code of Iowa. No previous certificate has been filed for this corner location. We found no record of the N 1/8 Corner being set. We found no evidence of a monument in the filed other than an existing fence corner with fence lines running north, south and west. We found the N 1/4 Corner and the S 1/4 Corner. the measured distance between the N 1/4 Corner and the S 1/4 Corner is 5186.09'. the record distance is 5173.41' (20 + 20 + 20 + 18.38 1/2 = 78.38 1/2 (5173.41')). We set a 3/4" diameter steel bar with 2" aluminum cap #11442 on line between the N 1/4 corner and the S 1/4 Corner at the proportioned distance of 1216.38' (5186.09/5173.41 x 1213.41 (18.38 1/2) = 1216.38) as the N 1/8 Corner of Section 3, Township 94 North, Range 12 West.

Plan-View

Cor. Y 3-94-12



I hereby certify that this land surveying document was prepared and the related survey work was performed by me or under my direct personal supervision and that I am a duly licensed Land Surveyor under the laws of the State of Iowa.

Signature Lindsay Erdman
 Lindsay Erdman, P.E. and P.L.S. Iowa License Number 11442

Date: 12/12/07

My license renewal date is December 31, 2008

Corner(s) to be Indexed

| Corner | Section | Township | Range |
|--------|---------|----------|-------|
| N 1/8 | 3 | 94 | 12 |