

Chickasaw Co. Recorder  
 Cindy Messersmith  
**Fee Book 2014-1038**  
 08/06/2014 @10:58AM  
 SCC SEC COR CERT # Pages: 1  
 Book: Page: # Pages: 1  
 Total Fees: \$7.00

Prepared by & Return to: Herold - Reicks Surveying, 10 East Main Street, New Hampton, IA 50659, Ph. 641-394-2725

**UNITED STATES PUBLIC LAND SURVEY CORNER CERTIFICATE**

Land Survey Monuments situated in Section 3, Township 94 North, Range 12 West of the Fifth Principal Meridian, Chickasaw County, Iowa. Previously not recorded in the County Recorder's office.

This certificate is being prepared in compliance with Iowa Code Chapter 355.11 because:

- 1 & 2  There is no certificate on file for this corner.  
 There are no longer three valid ties of record.  
 There are changes to reference ties of record.  
 There is change of monumentation of record.  
 To clarify description of record monument (ties).

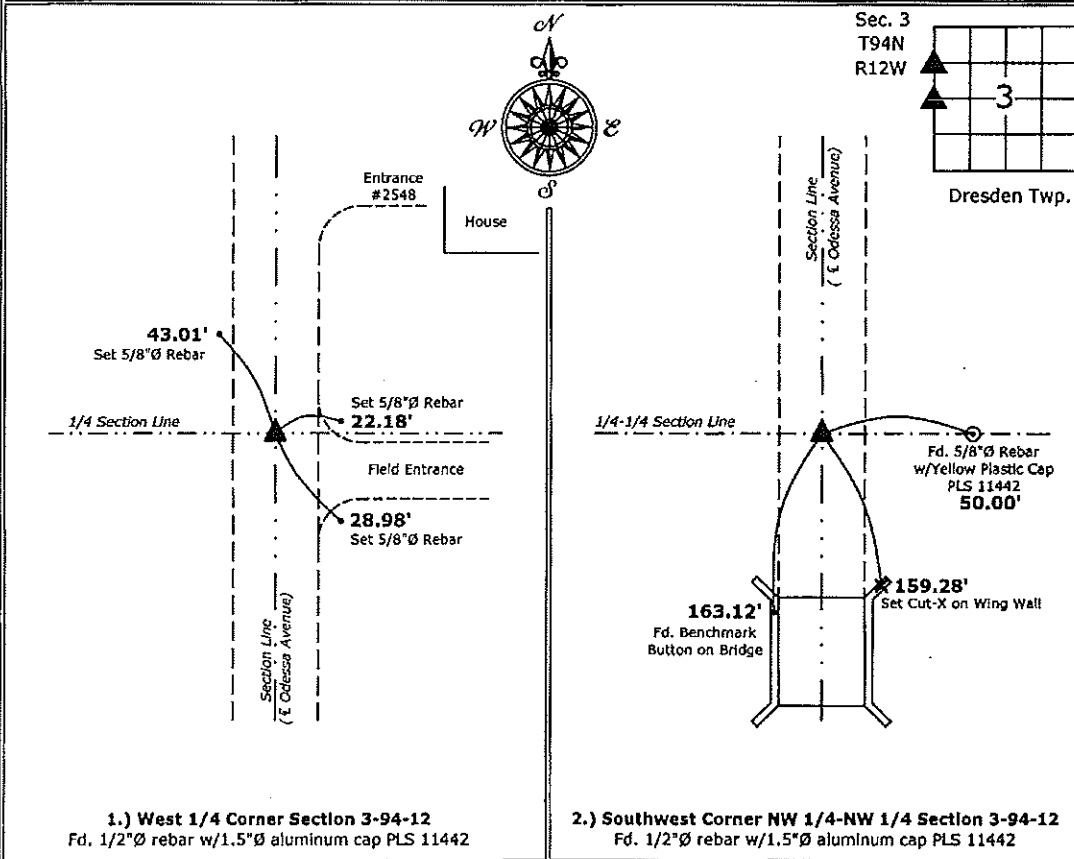
Monument Description and Remarks:

1.) West 1/4 Corner: Fd. 1/2"Ø rebar with 1.5"Ø aluminum cap PLS 11442 with information obtained from a Survey and Plat made by Lindsay Erdman, recorded May 18, 2006 as Document #2006-1051 on file in the Chickasaw County Recorder's office.

2.) Southwest Corner NW 1/4-NW 1/4: Fd. 1/2"Ø rebar with 1.5"Ø aluminum cap PLS 11442 with information obtained from a Survey and Plat made by Lindsay Erdman, recorded May 18, 2006 as Document #2006-1051 on file in the Chickasaw County Recorder's office.

**PLAN - VIEW**

(Show a minimum of three reference ties to durable physical objects, relevant monuments and physical conditions that will enable recovery of the corner.)



1.) West 1/4 Corner Section 3-94-12  
 Fd. 1/2"Ø rebar w/1.5"Ø aluminum cap PLS 11442

2.) Southwest Corner NW 1/4-NW 1/4 Section 3-94-12  
 Fd. 1/2"Ø rebar w/1.5"Ø aluminum cap PLS 11442



I hereby certify that this land surveying document was prepared and the related survey work was performed by me or under my direct personal supervision and that I am a duly licensed Land Surveyor under the laws of the State of Iowa.  
*Kirk D. Reicks 8-6-14*  
 Kirk D. Reicks Date:  
 License number 19211  
 My license renewal date is December 31, 2014.  
 Sheets covered by this seal: Individual sheet only

List Corners to be Indexed			
Corners	Section	Twp.	Range
W 1/4	3	94	12
SW-NW-NW	3	94	12
Project Number: 2014-120			
FB: Fredericksburg 1, Pgs. 8-9			

File: S:\\_C3D Projects\County Control Systems\CHICKASAW\CHICK-43 (F-Burg)\CHICK-43.dwg, 8/6/2014 6:41:21 AM

Section 3-94-12  
 As referred to in  
 Eng. Tie Book

2003-2313

PREPARED BY ROBERT L. HOLZE MID-WEST LAND SURVEYORS, INC., P.O. BOX 1352, MASON CITY, IOWA 50402-1352, (641)-423-1451

UNITED STATES PUBLIC LAND SURVEY CORNER CERTIFICATE  
 OF

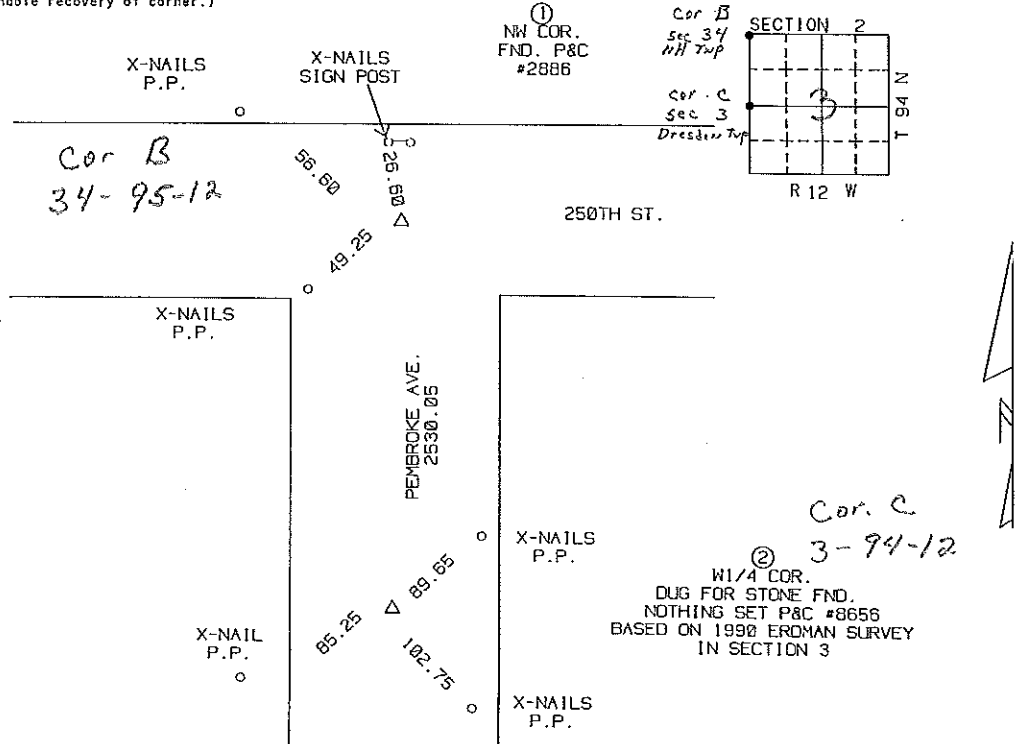
Land Survey Monuments situated in Section 2-3, Township 94N, Range 12W, of the Fifth Principal Meridian, CHICKASAW County, Iowa  
 Previously recorded in \_\_\_\_\_ in County Recorder's Office.  
 (book, page, document, number, etc.)

(Show reason for preparing this certificate, the evidence and detailed procedures used in establishing the corner position and monumentation found or placed.)  
 Monument Description and Remarks: \_\_\_\_\_

- ① NORTHWEST CORNER FOUND P&C #2886
- ② W1/4 CORNER DUG FOR STONE FOUND NOTHING SET P&C #8656 BASED ON 1990 ERDMAN SURVEY IN SECTION 3

PLAN-VIEW

(Show a minimum of three reference ties to durable physical objects, relevant monuments and physical conditions that will enable recovery of corner.)



I hereby certify that the survey work was completed and this certificate was prepared by me or under my direct personal supervision and that I am a duly Licensed and Licensed under the laws of the State of Iowa.  
 Signature: Robert L. Holze  
 Date: 7/21/2003 Reg. No. 8656  
 My registration renewal date is December 31, 2003

List of Corners to be Indexed			
Corners	Section	Twp.	Range
① NW COR.	2	94N	12W
② W1/4 COR	2	94N	12W