

Section 3-94-12
 As referred to in
 Engr. Tie Book

2003-2313

PREPARED BY ROBERT L. HOLZE MID-WEST LAND SURVEYORS, INC., P.O. BOX 1352, MASON CITY, IOWA 50402-1352, (641)-423-1451

UNITED STATES PUBLIC LAND SURVEY CORNER CERTIFICATE
 OF

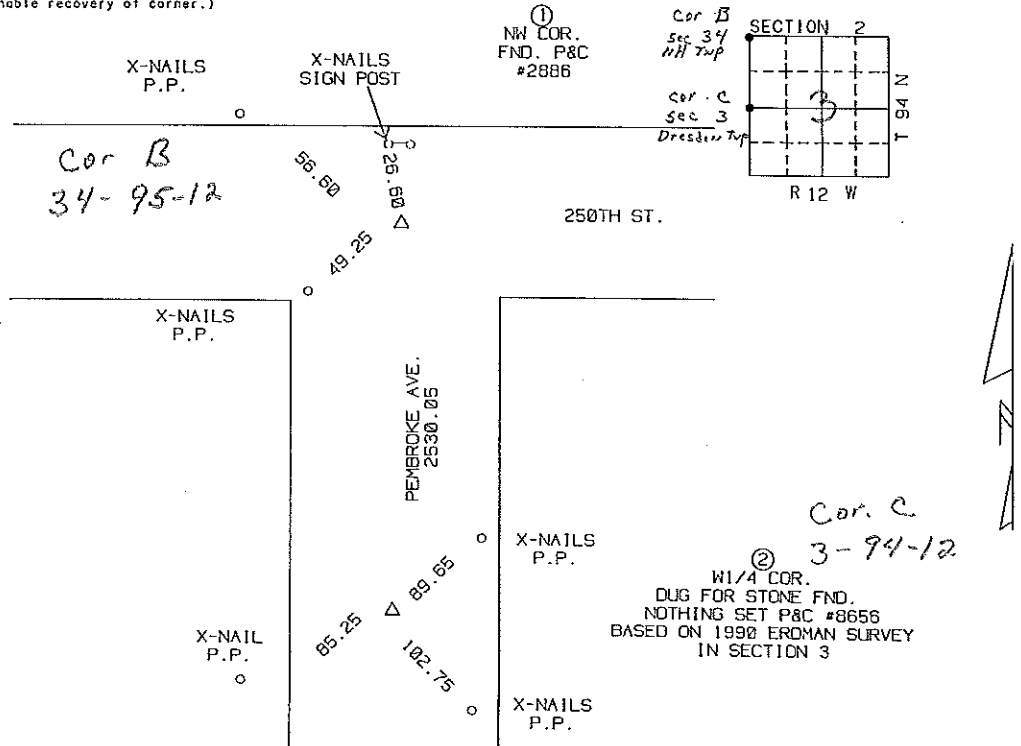
Land Survey Monuments situated in Section 2-3, Township 94N, Range 12W, of the Fifth Principal Meridian, CHICKASAW County, Iowa
 Previously recorded in _____ in County Recorder's Office.
 (book, page, document, number, etc.)

(Show reason for preparing this certificate, the evidence and detailed procedures used in establishing the corner position and monumentation found or placed.)
 Monument Description and Remarks: _____

- ① NORTHWEST CORNER FOUND P&C #2886
- ② W1/4 CORNER DUG FOR STONE FOUND NOTHING SET P&C #8656 BASED ON 1990 ERDMAN SURVEY IN SECTION 3

PLAN-VIEW

(Show a minimum of three reference ties to durable physical objects, relevant monuments and physical conditions that will enable recovery of corner.)



I hereby certify that the survey work was completed and this certificate was prepared by me or under my direct personal supervision and that I am a duly Licensed and Licensed under the laws of the State of Iowa.
 Signature: Robert L. Holze
 Date: 7/21/2003 Reg. No. 8656
 My registration renewal date is December 31, 2003

List of Corners to be Indexed			
Corners	Section	Twp.	Range
① NW COR.	2	94N	12W
② W1/4 COR	2	94N	12W