

Chickasaw Co. Recorder
 Cindy Messersmith
 Fee Book 2017-0296
 03/08/2017 @0904AM
 SEC COR CERT
 Book: Page: # Pages: 1
 Total Fees: \$7.00

Prepared by: Erdman Engineering, P.C., 708 Commerce Drive, P.O. Box 246, Decorah, Iowa, (563)382-4194

UNITED STATES PUBLIC LAND SURVEY CORNER CERTIFICATE
 OF

Land Survey Monuments situated in Section 7, Township 94 North, Range 12 West, of the Fifth Principal Meridian, Chickasaw County, Iowa, Previously recorded in does not apply in the County Recorder's Office.

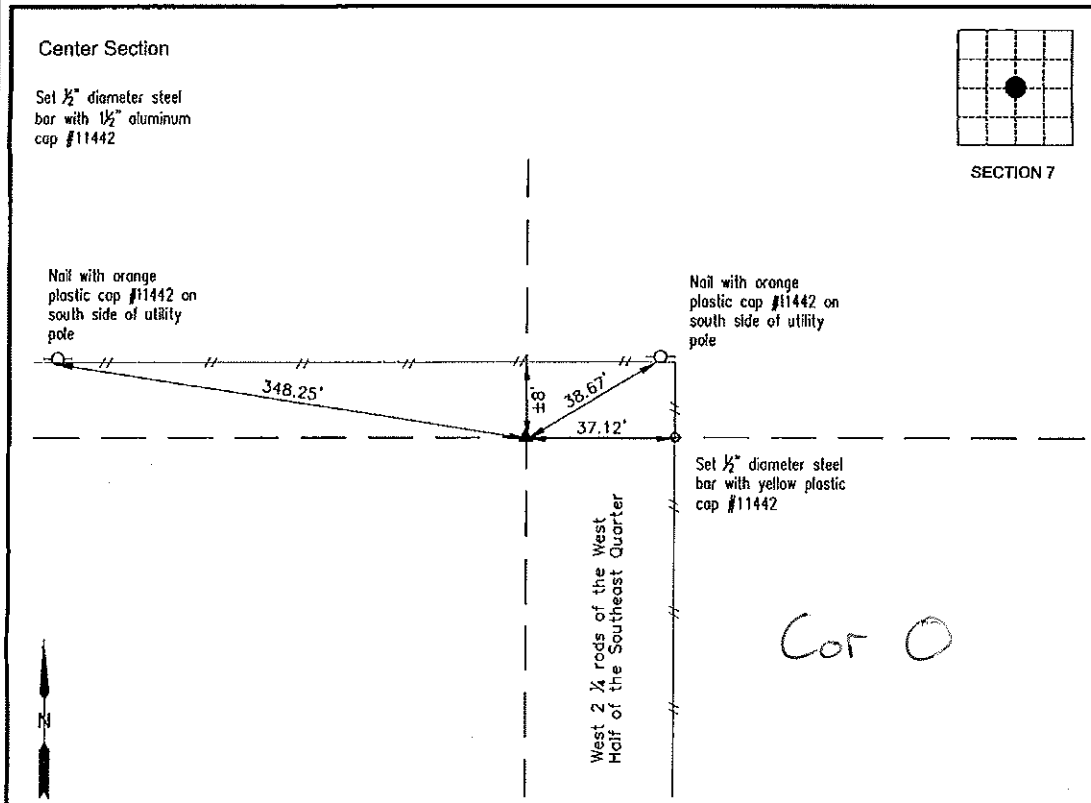
Monument Description and Remarks:

This certificate is prepared in accordance with Section 355.11 of the Code of Iowa. No previous certificates have been filed for these corner locations.

Center Section: We found no record of the Center of Section 7 being set. We found no evidence of a monument in the field other than an existing fence line running east and west. The plat of survey recorded as document 2002-0687 in the Chickasaw County Recorder's Office shows a computed location at the intersection of the lines for the opposite quarter corners. We found the S 1/4 Corner, N 1/4 Corner, E 1/4 Corner and the W 1/4 Corner. We set a 1/2" diameter steel bar with 1 1/2" aluminum cap #11442 at the intersection of the lines from the opposite quarter corners as the Center of Section 7, Township 94 North, Range 12 West.

PLAN-VIEW

(NOT TO SCALE)



I hereby certify that this land surveying document was prepared and the related survey work was performed by me or under my direct personal supervision and that I am a duly licensed Land Surveyor under the laws of the State of Iowa.



Lindsay Erdman 3/1/17
 Date
 Lindsay Erdman, P.E. & P.L.S.
 Licensed Professional Land Surveyor
 Iowa License Number 11442
 My License renewal date is December 31, 2018
 Pages or sheets covered by this seal: THIS SHEET ONLY

List Corner(s) to be Indexed

Corner(s)	Section	Township	Range
C.S.	7	94	12

ERDMAN ENGINEERING, P.C.

CIVIL ENGINEERING & LAND SURVEYING