

COPY

Section 12-94-12  
As referred to in  
Engr. Title Book

FILED 2002-2469

RECORDER'S OFFICE  
CHICKASAW COUNTY, IOWA

See 4600  
2002 OCT 16 AM 8 38

CINDY MEISSERSMITH  
COUNTY RECORDER

TEKIPPE ENGINEERING, P.C., 128 South Vine Street, West Union, Iowa 52175 Phone (563) 422-6131

UNITED STATES PUBLIC LAND SURVEY CORNER CERTIFICATE

OF 12  
Land Survey Monuments situated in Section 7, Township 94 North, Range  
11 1/2 West of the Fifth Principal Meridian, CHICKASAW County, Iowa.  
Previously recorded in Deeds Book 148, Page 355 in County Recorder's Office.  
(book, page, document number, etc.)

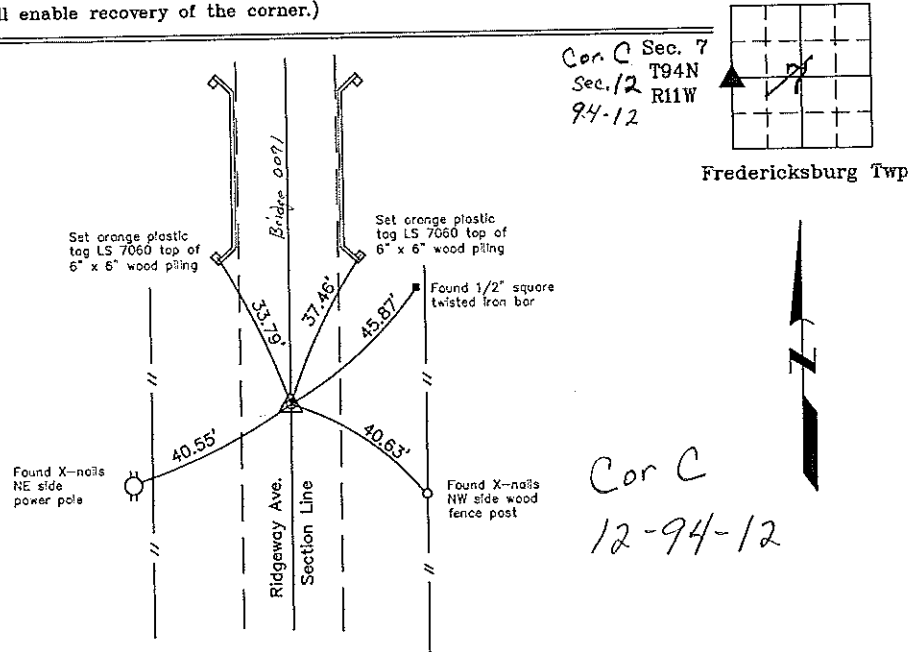
(Show reason for preparing this certificate, the evidence and detailed procedures used in establishing the corner positions and monumentation found or placed.)

Monument Description and Remarks: W 1/4 Corner Section 7 T94N R11W: Found 1/2"Ø rebar w/orange plastic cap LS 7060, 3' deep, with information obtained from the previous Section Corner Certificate recorded in the Chickasaw County Recorder's Office January 15, 1992 in Deeds Book 148, Page 355. Set 1/2"Ø rebar w/2"Ø aluminum cap LS 7060 over previous monument.

PLAN - VIEW

Project Number 02046.IS

(Show a minimum of three reference ties to durable physical objects, relevant monuments and physical conditions that will enable recovery of the corner.)



W 1/4 Corner Section 7 T94N R11W  
Set 1/2"Ø rebar w/2"Ø aluminum cap LS 7060



I hereby certify that this land surveying document was prepared and the related survey work was performed by me or under my direct personal supervision and that I am a duly licensed Land Surveyor under the laws of the State of Iowa.

*Lyle G. Tekippe* 10-15-02  
Lyle G. Tekippe Date  
License number 7060  
My license renewal date is December 31, 2002.  
Sheets covered by this seal: Individual

List Corners to be Indexed			
Corners	Section	Twp.	Range
W 1/4	7	94N	11W

Filed 10-25-02

X:\Section Corners\Sec. 0717-94-11k.dwg

"County Engineers Copy"