

2002 MAR 15 AM 8 50

CHDY MESSERSMITH  
 COUNTY RECORDER

TeKIPPE ENGINEERING, P.C., 128 South Vine Street, West Union, Iowa 52175 Phone (563) 422-6131

UNITED STATES PUBLIC LAND SURVEY CORNER CERTIFICATE

OF

Land Survey Monuments situated in Section 7, Township 94 North, Range 12 West of the Fifth Principal Meridian, CHICKASAW County, Iowa. Previously recorded in none in County Recorder's Office. (book, page, document number, etc.)

(Show reason for preparing this certificate, the evidence and detailed procedures used in establishing the corner positions and monumentation found or placed.)

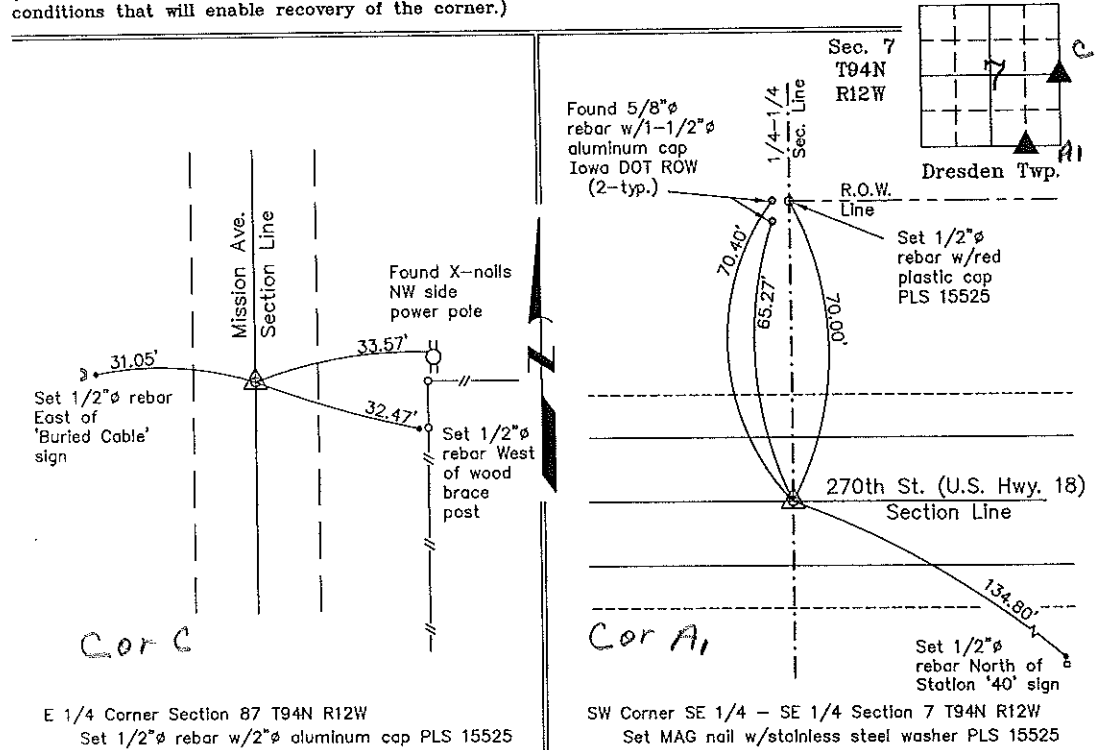
Monument Description and Remarks: E 1/4 Corner Section 7 T94N R12W: Found bent 1/2"Ø rebar with information obtained from a Cornerstone Survey made by Robert R. Burns, Jr. for Iowa Department of Transportation Project Number F-18-7(19)--21-19. Replaced bent rebar with 1/2"Ø rebar w/2"Ø aluminum cap PLS 15525.

SW Corner SE 1/4 - SE 1/4 Section 7 T94N R12W: Set MAG nail w/stainless steel washer PLS 15525 equidistant and on line between the SE Corner and the S 1/4 Corner.

PLAN - VIEW

Project Number 02028.LS  
 FB. 461 PG. 61-68

(Show a minimum of three reference ties to durable physical objects, relevant monuments and physical conditions that will enable recovery of the corner.)



E 1/4 Corner Section 7 T94N R12W  
 Set 1/2"Ø rebar w/2"Ø aluminum cap PLS 15525

SW Corner SE 1/4 - SE 1/4 Section 7 T94N R12W  
 Set MAG nail w/stainless steel washer PLS 15525



I hereby certify that this land surveying document was prepared and the related survey work was performed by me or under my direct personal supervision and that I am a duly licensed Land Surveyor under the laws of the State of Iowa.

Paul R. Herold 3-13-02  
 Paul R. Herold Date  
 License number 15525  
 My license renewal date is December 31, 2002.  
 Sheets covered by this seal: Individual

List Corners to be Indexed			
Corners	Section	Twp.	Range
E 1/4	7	94N	12W
SW-SE-SE	7	94N	12W

Filed 3-20-02

County Engineer  
 Copy