

Section 12-94-12
As referred to in
Engr. Tie Book

UNITED STATES PUBLIC LAND SURVEY CORNER CERTIFICATE

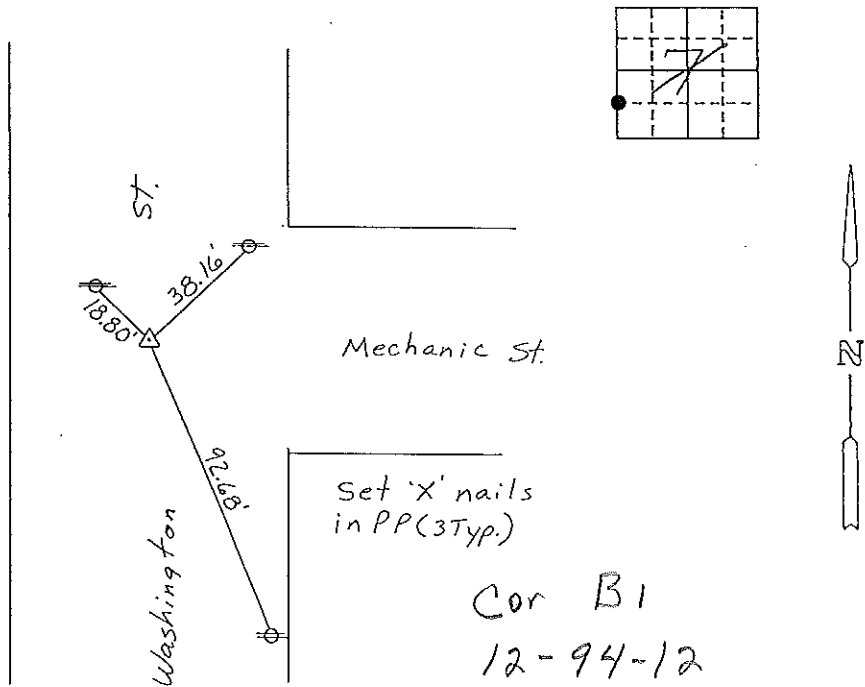
OF 12

Land Survey Monuments situated in Section 7, Township 94 NORTH, Range 11 WEST, of the Fifth Principal Meridian, CHICKASAW County, Iowa.
Previously recorded in (NONE) in County Recorder's Office.
(book, page, document number, etc.)

(Show reason for preparing this certificate, the evidence and detailed procedures used in establishing the corner positions and monumentation found or placed.)
Monument Description and Remarks: NW CORNER, SW 1/4 - FR'L SW 1/4, SECTION 7 - T94N - R11W: FOUND 1/2" φ REBAR WITH CAP #7060

PLAN - VIEW

(Show a minimum of three reference ties to durable physical objects, relevant monuments and physical conditions that will enable recovery of the corner.)

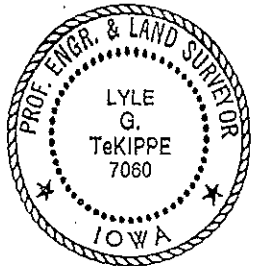


NW CORNER, SW 1/4 - FR'L SW 1/4, SECTION 7 - T94N - R11W

I hereby certify that the survey work was completed and this certificate was prepared by me or under my direct personal supervision and that I am a duly registered land surveyor under the laws of the state of Iowa.

Signature: Lyle G. TeKippe
Name typed or printed: Lyle G. TeKippe
Date: 1-6-93 Reg. No. 7060
My Registration Expires December 31, 1994

Corners	List Corners to be Indexed Section	Twp	Range
NW Cor.	SW 1/4 - FR'L SW 1/4	94N	11 W



Cor B1 Section 12-94-12
Placed in Tie Book
1/28/93