

Chickasaw Co. Recorder
 Cindy Messersmith
Fee Book 2008-0254
 02/12/2008 @1002AM
 SCC SEC COR CERT
 Book: Page: # Pages: 1
 Total Fees: \$7.00

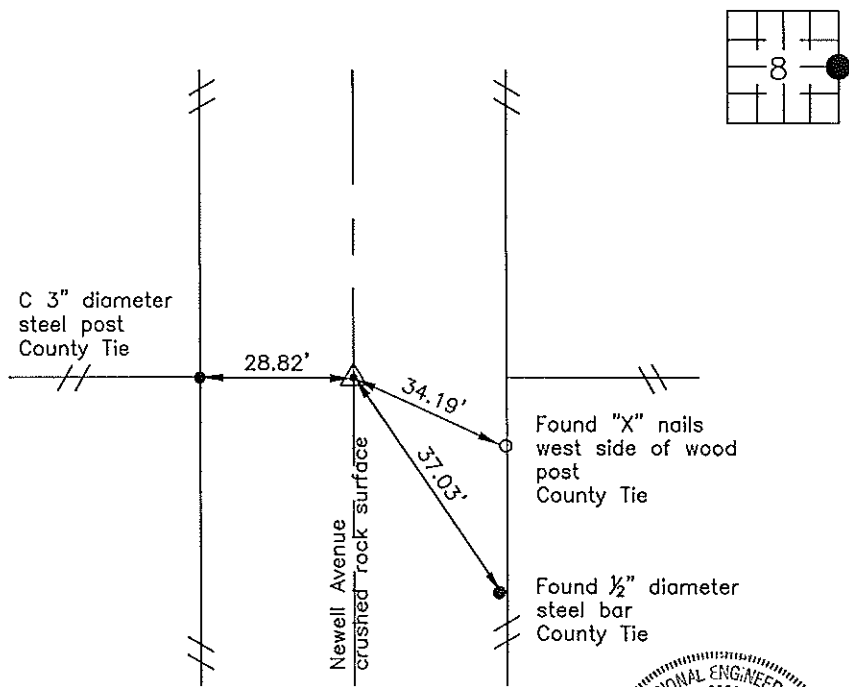
Prepared by: Erdman Engineering, P.C., 708 Commerce Drive, P.O. Box 246, Decorah, Iowa 52101 (563) 382-4194

United States Public Land Survey Corner Certificate
 of

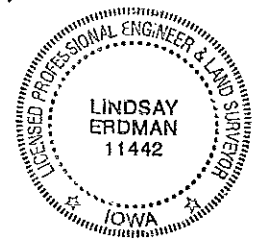
Land Survey Monuments situated in Section 8, Township 94, Range 12 West of
 the 5th Principal Meridian in Chickasaw County, Iowa. Previously recorded in
does not apply in the county Recorder's Office.

Monument Description and Remarks: This certificate is prepared in accordance with
 Section 193C of the Code of Iowa. No previous certificate has been filed for this
 corner location. Based on Chickasaw County Engineer's Reference Ties we found the
 previously referenced tie markers. From these ties we found a 1/2" diameter steel bar
 down ±8" below the existing crushed rock surface of the county road that matches the
 description of the monument set previously in 1979 as the E 1/4 corner of Section 8,
 Township 94 North, Range 12 West.

Plan-View



COR C



I hereby certify that this land surveying document
 was prepared and the related survey work was
 performed by me or under my direct personal
 supervision and that I am a duly licensed Land
 Surveyor under the laws of the State of Iowa.

Signature Lindsay Erdman
 Lindsay Erdman, P.E. and P.L.S. Iowa License Number 11442

Date: 2/8/08

My license renewal date is December 31, 2008

Corner(s) to be Indexed

Corner	Section	Township	Range
E 1/4	8	94	12