

2000-1898

TEKIPPE ENGINEERING, P.C., 128 South Vine Street, West Union, Iowa 52175 Phone (319) 422-5131

UNITED STATES PUBLIC LAND SURVEY CORNER CERTIFICATE

OF  
 Land Survey Monuments situated in Section 5, Township 94 North, Range 12 West of the Fifth Principal Meridian, CHICKASAW County, Iowa.  
 Previously recorded in none in County Recorder's Office.  
 (book, page, document number, etc.)

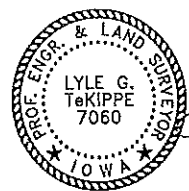
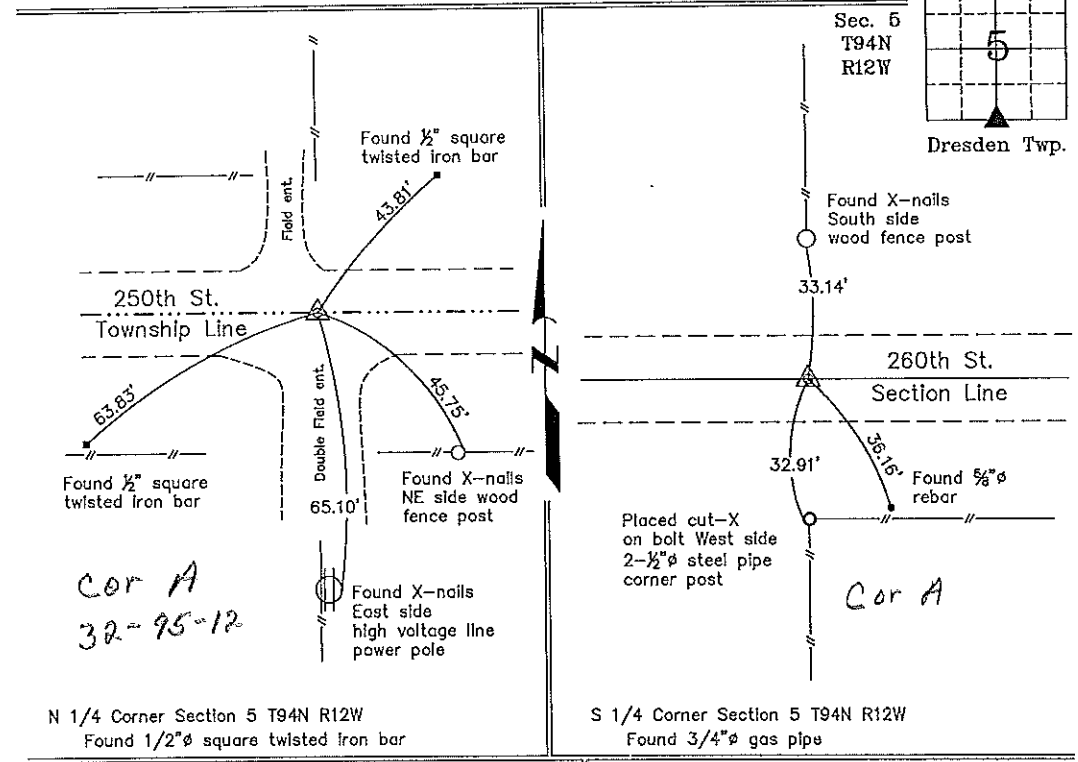
(Show reason for preparing this certificate, the evidence and detailed procedures used in establishing the corner positions and monumentation found or placed.)

Monument Description and Remarks: N 1/4 Corner Section 5 T94N R12W: Found 1/2" square twisted iron bar with information obtained from the Chickasaw County Engineer's Office in the Field Book New Hampton Twp. Corner Ties, Corner 'A', Sec. 32 T96N R12W.  
S 1/4 Corner Section 5 T94N R12W: Found 3/4" gas pipe with information obtained from the Chickasaw County Engineer's Office in the Field Book Dresden Twp. Corner Ties, Corner 'A'.

PLAN - VIEW

Project Number 00218.15  
 FR 48H PG. 30-32

(Show a minimum of three reference ties to durable physical objects, relevant monuments and physical conditions that will enable recovery of the corner.)



I hereby certify that this land surveying document was prepared and the related survey work was performed by me or under my direct personal supervision and that I am a duly licensed Land Surveyor under the laws of the State of Iowa.  
*Lyle G. TeKippe* 10-24-00  
 Lyle G. TeKippe Date  
 License number 7060  
 My license renewal date is December 31, 2000.  
 Sheets covered by this seal: Individual

List Corners to be Indexed			
Corners	Section	Twp.	Range
N 1/4	5	94N	12W
A	5		
S 1/4	5	94N	12W
A	32		

Filed 10-27-00