

Section 5-94-12
 AS referred to in
 Engr. Tie Book

Chickasaw Co. Recorder
 Cindy Messersmith
Fee Book 2008-0253
 02/12/2008 @0957AM
 SCC SEC COR CERT # Pages: 1
 Book: Page: \$7.00
 Total Fees:

Prepared by: Erdman Engineering, P.C., 708 Commerce Drive, P.O. Box 246, Decorah, Iowa 52101 (563) 382-4194

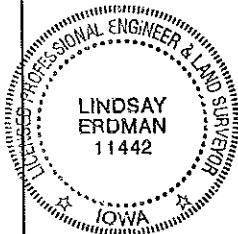
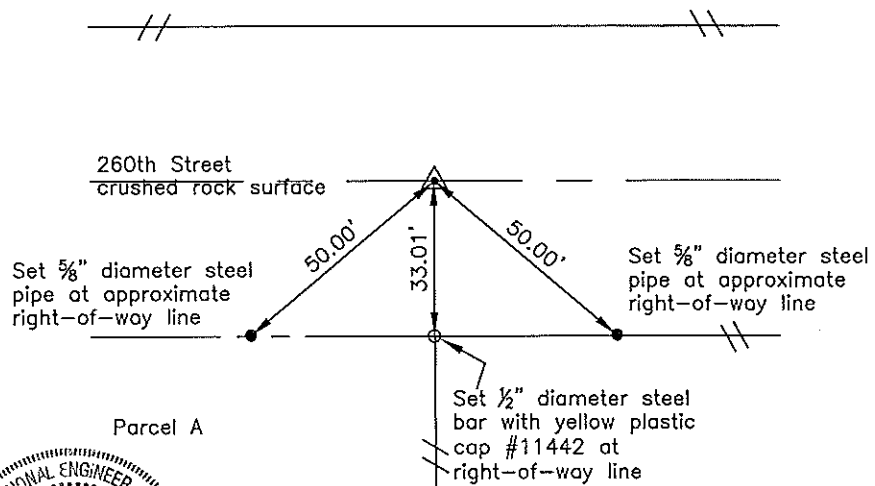
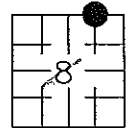
United States Public Land Survey Corner Certificate
 of 5

Land Survey Monuments situated in Section 8, Township 94, Range 12 West of the 5th Principal Meridian in Chickasaw County, Iowa. Previously recorded in does not apply in the county Recorder's Office.

Monument Description and Remarks: This certificate is prepared in accordance with Section 193C of the Code of Iowa. No previous certificate has been filed for this corner location. We found no record of the NNE 1/8 Corner being set other than Chickasaw County Engineer's Reference Ties show a reference to a "boulder with long point", the county road and a fence line running south. We found the N 1/4 Corner and NE Corner. We computed the location of the NNE 1/8 Corner on line and equidistant between the N 1/4 Corner and the NE Corner. This location was in line with the fence line running south and approximately in the centerline of the county road. We dug a 2' x 2' hole 2' deep. We did not find the boulder. We set a 1/2" diameter steel bar with 1 1/2" aluminum cap #11442 at the computed location as the NNE 1/8 Corner of Section 8, Township 94 North, Range 12 West.

Plan-View

Cor A1
 sec 5



Cor A1
 5-94-12

I hereby certify that this land surveying document was prepared by me or under my direct personal supervision and that I am a duly licensed Land Surveyor under the laws of the State of Iowa.

Signature Lindsay Erdman
 Lindsay Erdman, P.E. and P.L.S. Iowa License Number 11442

Date: 2/8/08

My license renewal date is December 31, 2008

Corner(s) to be Indexed

Corner	Section	Township	Range
NNE 1/8	8	94	12