

Section 5-94-12
As referred to in
Engr. Tie Book

TeKIPPE ENGINEERING, P.C., 128 South Vine Street, West Union, Iowa 52175 Phone (319) 422-5131

UNITED STATES PUBLIC LAND SURVEY CORNER CERTIFICATE

OF 5

Land Survey Monuments situated in Section A, Township 94 North, Range 12 West, of the Fifth Principal Meridian, CHICKASAW County, Iowa. Previously recorded in NONE in County Recorder's Office.

(book, page, document number, etc.)

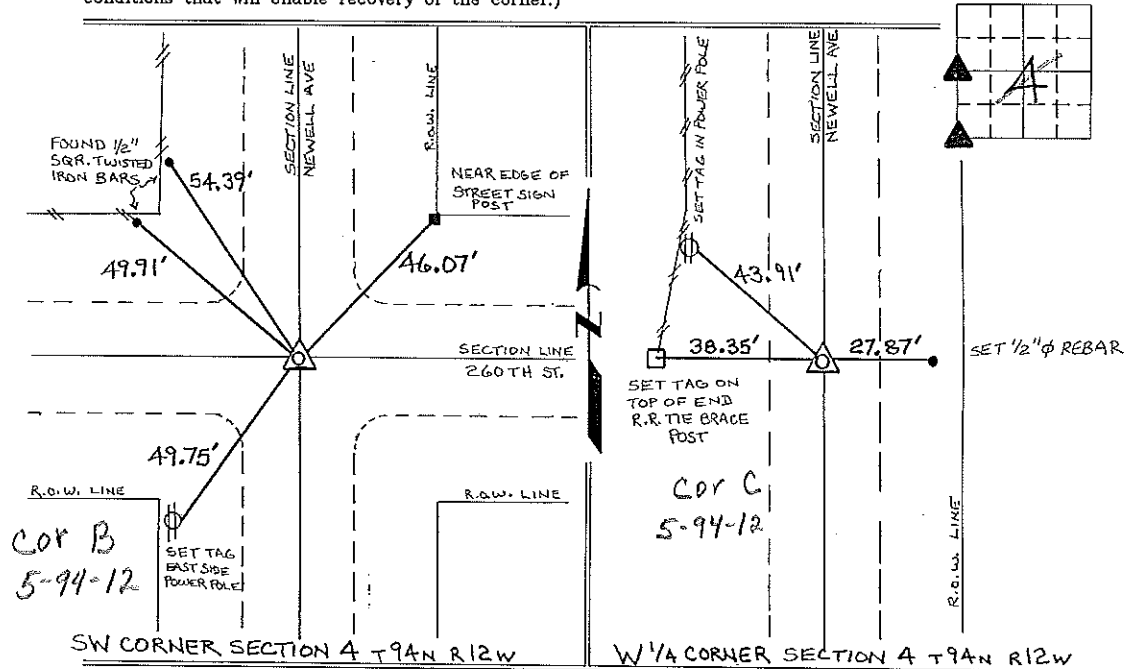
(Show reason for preparing this certificate, the evidence and detailed procedures used in establishing the corner positions and monumentation found or placed.)

Monument Description and Remarks: SW CORNER SECTION A T94N R12W:
FOUND 5/8" φ REBAR 0.8 DEEP MATCHING TIES OBTAINED FROM THE COUNTY ENGINEERS OFFICE, IN FIELD BOOK "DRESDEN TWP. CORNERTIES".

W 1/4 CORNER SECTION A T94N R12W: SET 1/2" φ REBAR W/CAP TO GO RECORD DISTANCE FROM THE SW COR, ALIGNMENT CREATED BY SPLITTING R.O.W. FENCES AT THE LINE FENCES EAST-WEST ON THE ASSUMED 1/2-1/4 SECTION LINE, THIS DISTANCE ALSO CHECKS WITH RECORD INFORMATION FROM THE COUNTY ENGINEERS OFFICE, IN FIELD BOOK "DRESDEN TWP. CORNER TIES".

PLAN - VIEW

(Show a minimum of three reference ties to durable physical objects, relevant monuments and physical conditions that will enable recovery of the corner.)



I hereby certify that the survey work was completed and this certificate was prepared by me or under my direct personal supervision and that I am a duly registered land surveyor under the laws of the state of Iowa.

Signature: Lyle G. TeKippe
Lyle G. TeKippe

Date: 3-27-96 Reg. No. 7080
My Registration Renewal Date is December 31, 1996

Seal



List Corners to be Indexed			
Corners	Section	Twp.	Range
SW	A	94	12
	Cor B - 5-94-12		
W 1/4	A	94	12
	Cor C 5-94-12		

Placed in tie
Book 4/29/96