

FILED 2001-1437
 RECORDER'S OFFICE
 CHICKASAW COUNTY, IOWA
Fee \$6.00
 2001 JUL 16 AM 9 04

CINDY MESSERSMITH
 COUNTY RECORDER

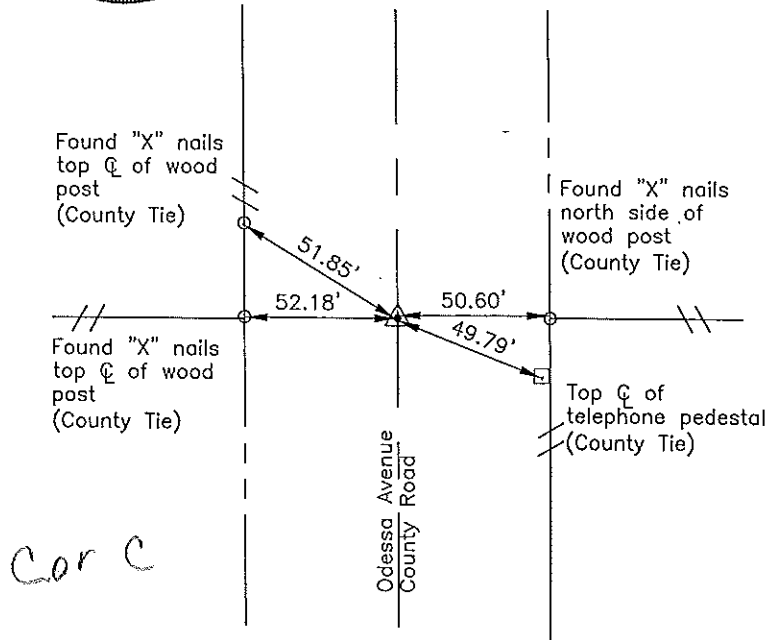
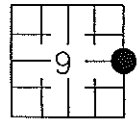
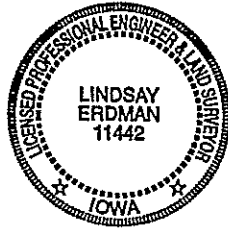
Prepared by: Erdman Engineering, P.C. 708 Commerce Drive, P.O. Box 246 Decorah, Iowa 52101,(563)382-4194

United States Public Land Survey Corner Certificate
 of

Land Survey Monuments situated in Section 9, Township 94, Range 12 West of
 the 5th Principal Meridian in Chickasaw County, Iowa. Previously recorded in
does not apply in the county Recorder's Office.

Monument Description and Remarks: This certificate is prepared in accordance with
 Section 193C of the Code of Iowa. No previous certificate has been filed for this
 corner location. Based on Chickasaw County Engineer's Reference Ties for Corner C of
 Section 9 of Dresden Township, we found three sets of "X" nails and a telephone
 pedestal all used previously as tie markers. From these ties we found a 5/8" diameter
 steel bar at the approximate centerline of the county road and in line with the fence
 lines running east and west that matches the description of the monument used
 previously as the E 1/4 corner of Section 9, Township 94 North, Range 12 West.

Plan-View



I hereby certify that the survey work was completed
 and this certificate was prepared by me or under my
 direct supervision and that I am a duly registered
 land surveyor under the laws of the State of Iowa.

Signature: *Lindsay Erdman*
 Lindsay Erdman, P.E. and L.S.
 Date: 7/12/01 Reg. No. 11442

My license renewal date is December 31, 2002

Corner(s) to be Indexed

Corner	Section	Township	Range
E 1/4	9	94	12

File in Book 7-16-01