

Section 4-94-12
As referred to in
Engr. Tie Book

TeKIPPE ENGINEERING, P.C., 128 South Vine Street, West Union, Iowa 52175 Phone (319) 422-5131

UNITED STATES PUBLIC LAND SURVEY CORNER CERTIFICATE

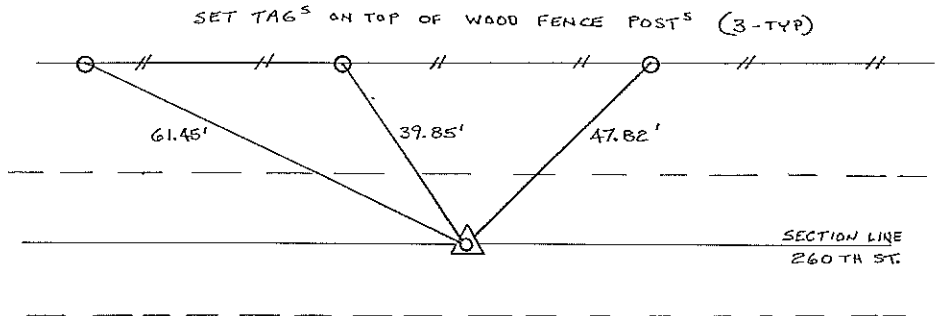
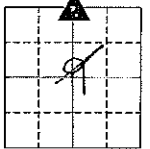
OF
Land Survey Monuments situated in Section 94, Township 94 North, Range 12 West, of the Fifth Principal Meridian, CHICKASAW County, Iowa. Previously recorded in NONE in County Recorder's Office.
(book, page, document number, etc.)

(Show reason for preparing this certificate, the evidence and detailed procedures used in establishing the corner positions and monumentation found or placed.)

Monument Description and Remarks: N 1/4 CORNER SECTION 9 T94N R12W: SET 1/2" Ø REBAR W/ CAP 7060, SET FROM THE FOLLOWING INFORMATION: WE OBTAINED A SET OF TIES FROM THE COUNTY ENGINEERS OFFICE FOR THE CORNER, HOWEVER THE CORNER AND THE TIES WERE REMOVED DURING CONSTRUCTION OF AN R.C. BOX CULVERT, WE FOUND A R.O.W. FLAT SET BY THE COUNTY, POSITION LISTED ON A R.O.W. EASEMENT RECORDED APRIL 30, 1990, BOOK 14A, PAGE 488, THAT INDICATED THIS R.O.W. POSITION TO BE 33.0 FEET NORTH AND 300.0 FT WEST OF THE CORNER, WE SET THE CORNER BASED ON THAT POSITION.

PLAN - VIEW

(Show a minimum of three reference ties to durable physical objects, relevant monuments and physical conditions that will enable recovery of the corner.)



Cor A
4-94-12



I hereby certify that this land surveying document was prepared and the related survey work was performed by me or under my direct personal supervision and that I am a duly licensed Land Surveyor under the laws of the State of Iowa.
Lyle G. TeKippe 9-24-97
Lyle G. TeKippe Date
License number 7060
My license renewal date is December 31, 1998.
Sheets covered by this seal: Individual

List Corners to be Indexed			
Corners	Section	Twp.	Range
N 1/4	9	94N	12W

Corner A 4-94-12
Placed in the book
9/25/97 JFM

"County Engineer's Copy"