

Prepared by & Return to: Herold - Reicks Surveying, 10 East Main Street, New Hampton, IA 50659, Ph. 641-394-2725

UNITED STATES PUBLIC LAND SURVEY CORNER CERTIFICATE

Land Survey Monuments situated in Section 10, Township 94 North, Range 12 West of the Fifth Principal Meridian, Chickasaw County, Iowa. 1.) Previously recorded in Document #2002-2749 in the County Recorder's office. 2.) Not previously recorded in the County Recorder's office.

This certificate is being prepared in compliance with Iowa Code Chapter 355.11 because:

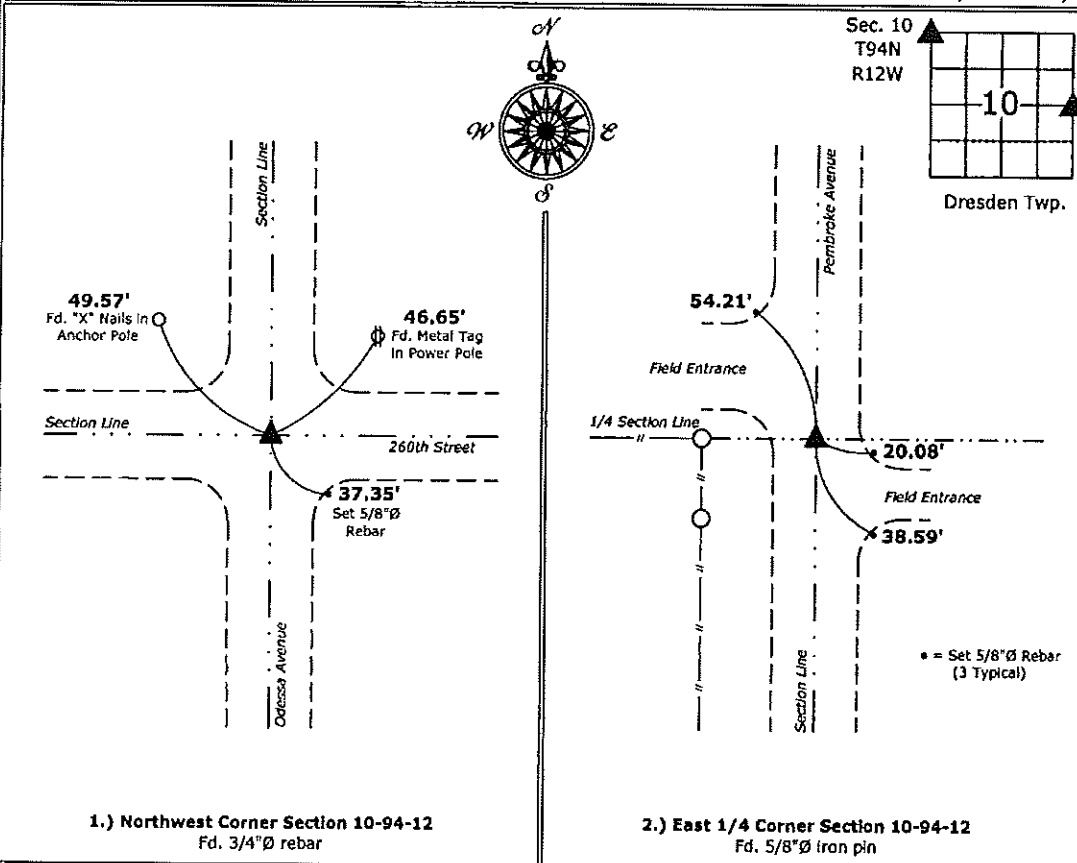
- There is no certificate on file for this corner.
- There are no longer three valid ties of record.
- There are changes to reference ties of record.
- There is change of monumentation of record.
- To clarify description of record monument (ties).

Monument Description and Remarks:

- 1.) **Northwest Corner:** Fd. 3/4"Ø rebar from information obtained from previous Section Corner Certificate. Previous Section Corner Certificate had error in reference monument designations, prepared new Certificate to correct errors.
- 2.) **East 1/4 Corner:** Fd. 5/8"Ø iron pin with information obtained from the County Engineer's office in Field Book Dresden Township, Section 10, Corner "C".

PLAN - VIEW

(Show a minimum of three reference ties to durable physical objects, relevant monuments and physical conditions that will enable recovery of the corner.)



1.) Northwest Corner Section 10-94-12
 Fd. 3/4"Ø rebar

2.) East 1/4 Corner Section 10-94-12
 Fd. 5/8"Ø iron pin



I hereby certify that this land surveying document was prepared and the related survey work was performed by me or under my direct personal supervision and that I am a duly licensed Land Surveyor under the laws of the State of Iowa.
Paul R. Herold 12-22-14
 Paul R. Herold Date:
 License number 15525
 My license renewal date is December 31, 2014.
 Sheets covered by this seal: Individual sheet only

List Corners to be Indexed			
Corners	Section	Twp.	Range
NW	10	94	12
E 1/4	10	94	12

Project Number: 2014-252
 FB: Chickasaw County 6, Pgs. 65-66

File: S:_C3D Projects\County Control Systems\CHICKSAW\CHICK-43 (F-Burg)\CHICK-43.dwg, 12/17/2014 2:52:02 PM

Section 4-94-12
As referred to in
Engl. Tie Book

FILED 2002 - 2749
RECORDER'S OFFICE
CHICKASAW COUNTY, IOWA
Fee \$600
2002 NOV 13 AM 8 35
GIMDY MESSERSMITH
COUNTY RECORDER

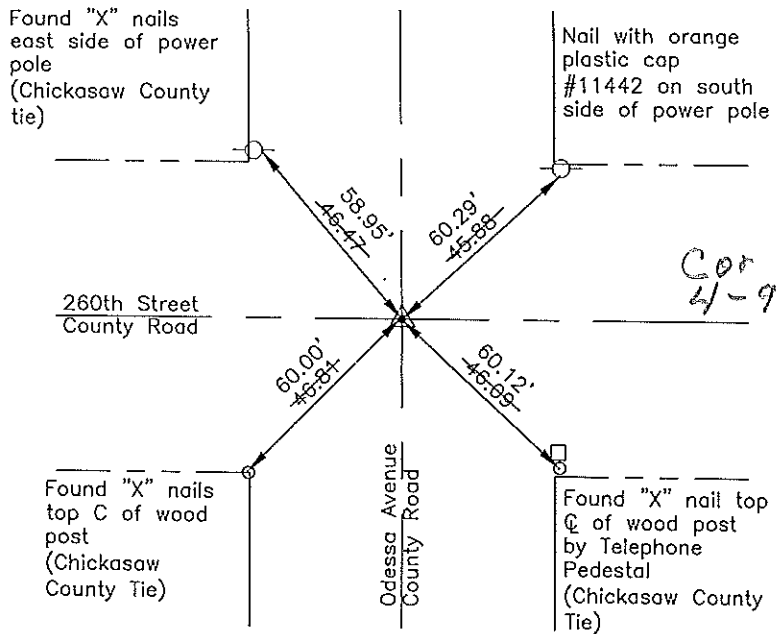
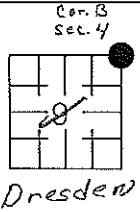
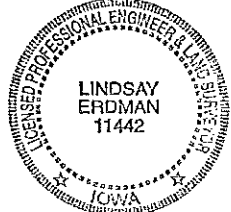
Prepared by: Erdman Engineering, P.C. 708 Commerce Drive, P.O. Box 246 Decorah, Iowa 52101, (563)382-4194

United States Public Land Survey Corner Certificate
of 4

Land Survey Monuments situated in Section 9, Township 94, Range 12, West of the 5th Principal Meridian in Chickasaw County, Iowa. Previously recorded in 2001-1436 in the county Recorder's Office.

Monument Description and Remarks: This certificate is prepared in accordance with Section 193C of the Code of Iowa.
This certificate is prepared to correct a drafting error in the dimensions on the previously recorded certificate.

Plan-View



I hereby certify that the survey work was completed and this certificate was prepared by me or under my direct supervision and that I am a duly registered land surveyor under the laws of the State of Iowa.

Signature: *Lindsay Erdman*
Lindsay Erdman, P.E. and L.S.
Date: 11/5/02 Reg. No. 11442
My license renewal date is December 31, 2002

Corner(s) to be Indexed

Corner	Section	Township	Range
NE	9	94	12

Filed 11-18-02