

Section 10-94-11  
As referred to in  
Engr. Tie Book

FILE NO. 2003-1479  
BOOK PAGE

2003 MAY 14 AM 9:27

CINDY MESSERSMITH  
CHICKASAW CO. RECORDER

TEKIPPE ENGINEERING, P.C., 128 South Vine Street, West Union, Iowa 52176 Phone (563) 422-6131

UNITED STATES PUBLIC LAND SURVEY CORNER CERTIFICATE

OF 10  
Land Survey Monuments situated in Section 11, Township 94 North, Range 11 West of the Fifth Principal Meridian, CHICKASAW County, Iowa.  
Previously recorded in none in County Recorder's Office.  
(book, page, document number, etc.)

(Show reason for preparing this certificate, the evidence and detailed procedures used in establishing the corner positions and monumentation found or placed.)

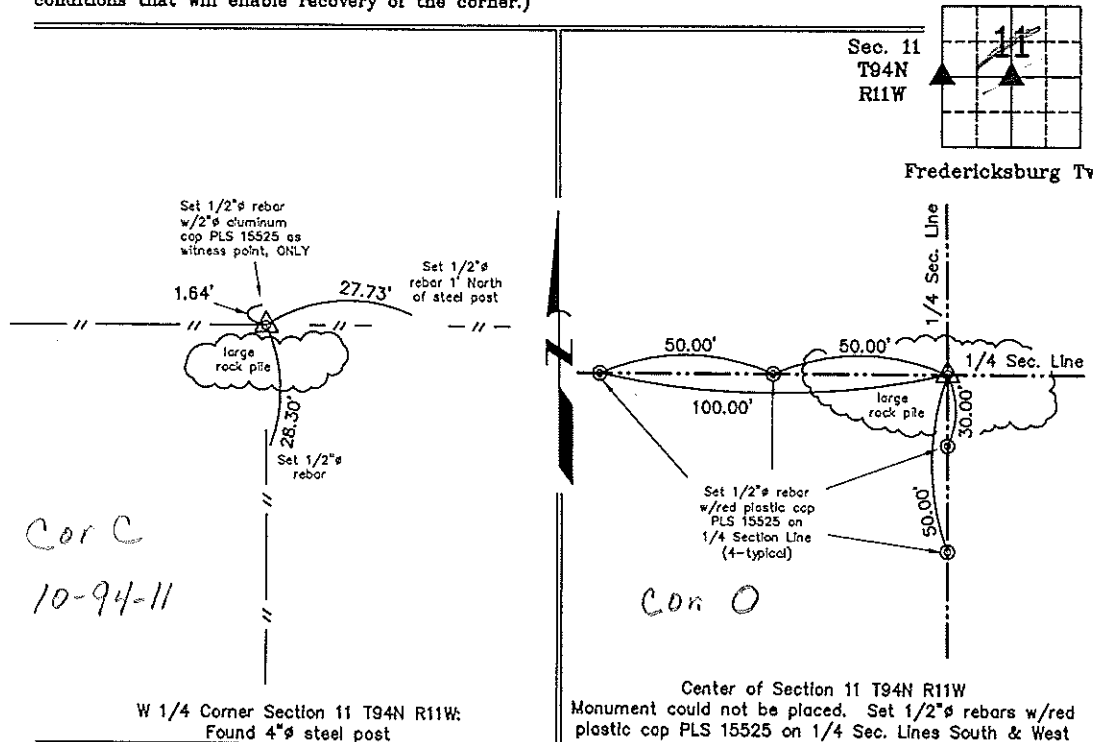
Monument Description and Remarks: W 1/4 Corner Section 11 T94N R11W: Found 4"Ø steel post with information obtained from a Corner Stone Survey made by Robert R. Burns, Jr., for Iowa DOT Project, F-18-7(19)--21-19, Chickasaw County.

Center of Section 11 T94N R11W: Position of calculated Center of Section, intersection of 1/4 Section Lines, falls in a large rock pile. Witness points, 1/2"Ø rebars w/red plastic cap PLS 15525, were placed on the 1/4 Section lines to the South and West.

PLAN - VIEW

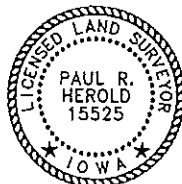
Project Number 03090.LS  
FB. 46K PG. 7-9

(Show a minimum of three reference ties to durable physical objects, relevant monuments and physical conditions that will enable recovery of the corner.)



W 1/4 Corner Section 11 T94N R11W:  
Found 4"Ø steel post

Center of Section 11 T94N R11W  
Monument could not be placed. Set 1/2"Ø rebars w/red plastic cap PLS 15525 on 1/4 Sec. Lines South & West



I hereby certify that this land surveying document was prepared and the related survey work was performed by me or under my direct personal supervision and that I am a duly licensed Land Surveyor under the laws of the State of Iowa.

*Paul R. Herold* 5-12-03  
Paul R. Herold Date  
License number 15525  
My license renewal date is December 31, 2004.  
Sheets covered by this seal: Individual

List Corners to be Indexed			
Corners	Section	Twp.	Range
W 1/4	11	94N	11W
Center	11	94N	11W

Filed 5-19-03

X:\Section Corners\Sec. 11\11-94-11km.dwg

County Engineer  
Ward