

2004 JUN 14 AM 9 30

CINDY MESSERSMITH  
COUNTY RECORDER

TEKIPPE ENGINEERING, P.C., 128 South Vine Street, West Union, Iowa 52175 Phone (563) 422-5131

UNITED STATES PUBLIC LAND SURVEY CORNER CERTIFICATE

OF

Land Survey Monuments situated in Section 3, Township 94 North, Range 11 West of the Fifth Principal Meridian, CHICKASAW County, Iowa.  
Previously recorded in none in County Recorder's Office.  
(book page, document number, etc.)

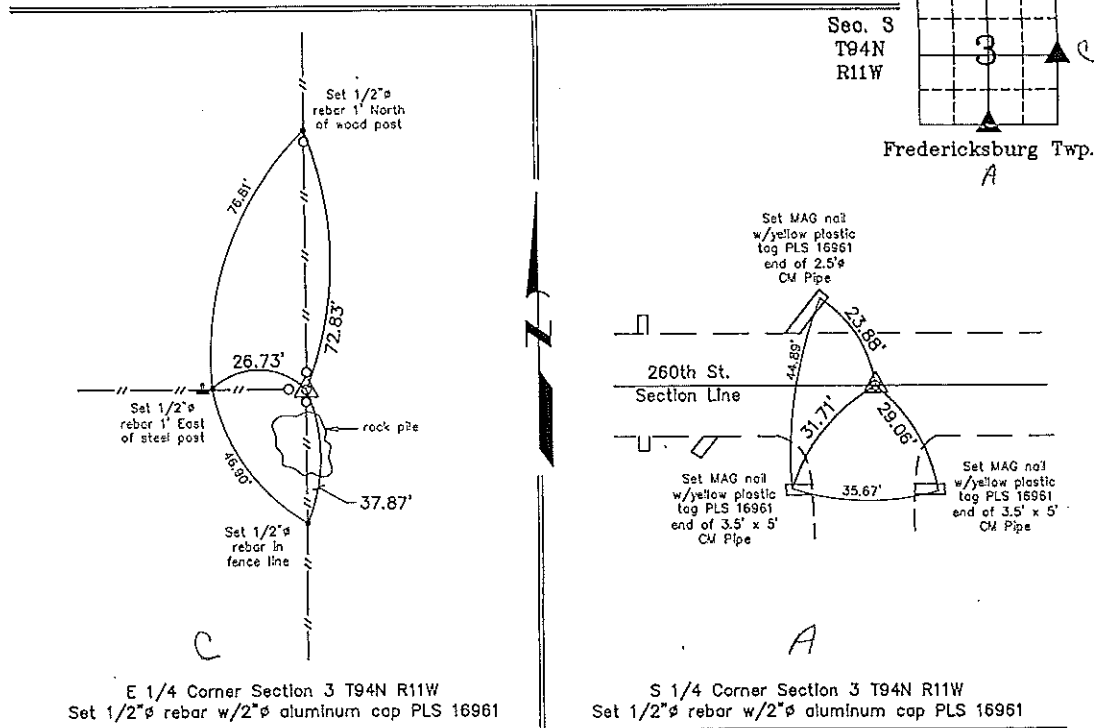
(Show reason for preparing this certificate, the evidence and detailed procedures used in establishing the corner positions and monumentation found or placed.)

Monument Description and Remarks: E 1/4 Corner Section 3 T94N R11W: Set 1/2"Ø rebar w/2"Ø aluminum cap PLS 16961 at intersection of possession fences. No record was found of perpetuation of a monument at this Corner.

S 1/4 Corner Section 3 T94N R11W: Set 1/2"Ø rebar w/2"Ø aluminum cap PLS 16961 at midsplit of ROW fences on line with the fence to the North as indicated in the Chickasaw County Engineer's Office in Field Book Fredericksburg Twp., Section 3, Corner 'A'.

PLAN - VIEW

(Show a minimum of three reference ties to durable physical objects, relevant monuments and physical conditions that will enable recovery of the corner.)



I hereby certify that this land surveying document was prepared and the related survey work was performed by me or under my direct personal supervision and that I am a duly licensed Land Surveyor under the laws of the State of Iowa.

*Michael J. Shimak* June 13, 2004  
Michael J. Shimak Date

License number 16961  
My license renewal date is December 31, 2005.  
Sheets covered by this seal: Individual

List Corners to be Indexed			
Corners	Section	Twp.	Range
E 1/4	3	94N	11W
S 1/4	3	94N	11W

X:\Section Corners\Sec. 03\3-94-11ow.dwg  
Project Number 04107.LS  
FB. 48L PG. 3-5

COUNTY ENGINEER'S  
COPY