

Prepared by/Return to: FEHR GRAHAM, 128 S. Vine Street, West Union, IA 52175 - Ph. (563)422-5131

**UNITED STATES PUBLIC LAND SURVEY CORNER CERTIFICATE**  
**CHICKASAW COUNTY, IOWA**  
**SECTION 11-T94N-R11W**

<p>(1) <b>N1/4 CORNER OF SEC. 11-94-11</b></p> <p>Set 1/2" rebar 34.94'      HOUSE ENT. 1/4 SECTION LINE 24.84'      SECTION LINE &amp; E 280TH STREET      FIELD ENT. 36.28'      Set orange plastic tag #7060 on top center of wood gate post      37.00'      Set orange plastic tag #7060 on top center of wood fence post</p> <p align="center">R11W      T94N      SEC. 11      FREDERICKSBURG TWP.</p> <p><i>Cor A      Sec. 2-94-11</i></p> <p><b>PREVIOUSLY RECORDED:</b>      in Fee Book 2009-1948, in County Recorder's office.</p> <p><b>PURPOSE OF CERTIFICATE:</b>      Retied monument due to missing ties from previous certificate.</p> <p><b>MONUMENT DESCRIPTION AND ESTABLISHMENT:</b>      Found 1/2" rebar w/Aluminum Cap #15525</p>	<p>(2) <b>CENTER OF SEC. 11-94-11</b></p> <p>Found 1/2" rebar w/red plastic cap #15525      50.00'      ROCK      100.00'      20.00'      PILE      50.00'      1/4 SECTION LINE</p> <p>Set 1/2" rebar w/red plastic cap #7060 (3 typ.)</p> <p align="center">R11W      T94N      SEC. 11      FREDERICKSBURG TWP.</p> <p><i>Cor D      Sec 11-94-11</i></p> <p><b>PREVIOUSLY RECORDED:</b>      as File Number 2003-1479, in County Recorder's office.</p> <p><b>PURPOSE OF CERTIFICATE:</b>      Filing certificate due to missing ties from previous certificate. Looked like recent grading work took place.</p> <p><b>MONUMENT DESCRIPTION AND ESTABLISHMENT:</b>      Monument could not be placed. Set 1/2" rebar w/red plastic cap #7060 and found one 1/2" rebar w/red plastic cap #15525 from previous certificate, all are on 1/4 Section Lines South and West.</p>
---	---

**CORNERS TO BE INDEXED**

CORNER	SECTION	TOWNSHIP	RANGE
(1) N1/4	11	94N	11W
(2) CENTER	11	94N	11W



I hereby certify that this land surveying document was prepared and the related survey work was performed by me or under my direct personal supervision and that I am a duly licensed Land Surveyor under the laws of the State of Iowa.

*Lyle G. Tekippe* 7-24-17  
 Lyle G. Tekippe, P.E. & P.L.S. Date  
 License Number: 7060  
 My license renewal date is December 31, 2018.  
 Sheets covered by this seal: Sheet 1

**FEHR GRAHAM**  
 ENGINEERING & ENVIRONMENTAL  
 ©2017 FEHR GRAHAM

ILLINOIS  
 IOWA  
 WISCONSIN

G:\C30\17\17-592-L5-VICKERY\11-94-11MC.dwg

JOB NUMBER:  
17-592

SHEET NUMBER:  
1 of 1

*Herald - Reicks Surveying, 25 1/2 East Main Street, Suite 204, New Hampton, IA 50659, Ph. 641-394-2725*

**UNITED STATES PUBLIC LAND SURVEY CORNER CERTIFICATE**

Land Survey Monuments situated in Section <sup>3</sup>11, Township 94 North, Range 11 West of the Fifth Principal Meridian, Chickasaw County, Iowa. Previously recorded in 1.) Doc. #2003-1481, 2.) Doc. #2003-1480 in the Chickasaw County Recorder's office.

This certificate is being prepared in compliance with Iowa Code Chapter 355.11 because:

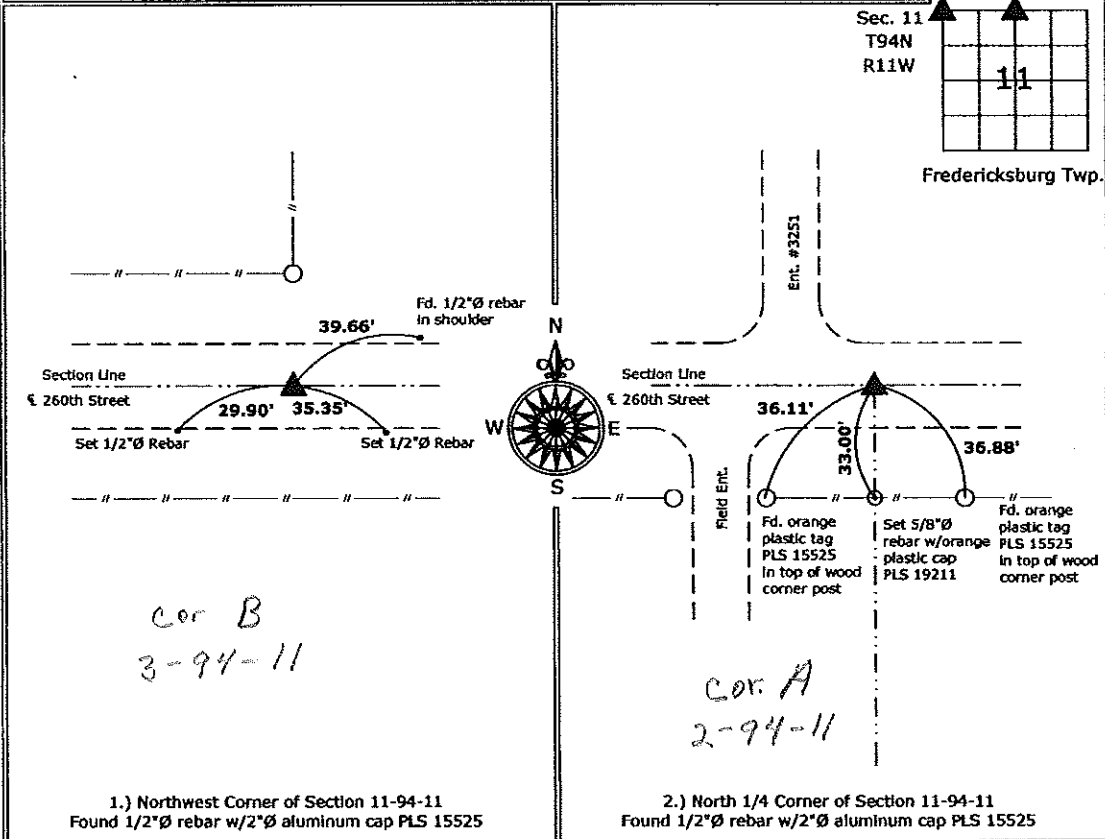
- There is no certificate on file for this corner.
- 1,2.  There are no longer three valid ties of record.
- There are changes to reference ties of record.
- There is change of monumentation of record.
- To clarify description of record monument (ties).

**Monument Description and Remarks:**

- 1.) **Northwest Corner:** Found 1/2"Ø rebar w/ 2"Ø aluminum cap PLS 15525 from information obtained from the previous section corner certificate.
- 2.) **North 1/4 Corner:** Found 1/2"Ø rebar w/ 2"Ø aluminum cap PLS 15525 from information obtained from the previous section corner certificate.

**PLAN - VIEW**

(Show a minimum of three reference ties to durable physical objects, relevant monuments and physical conditions that will enable recovery of the corner.)



I hereby certify that this land surveying document was prepared and the related survey work was performed by me or under my direct personal supervision and that I am a duly licensed Land Surveyor under the laws of the State of Iowa.  
*Kirk D. Reicks 10-7-09*  
 Kirk D. Reicks Date:  
 License number 19211  
 My license renewal date is December 31, 2010.  
 Sheets covered by this seal: Individual sheet only

List Corners to be Indexed			
Corners	Section	Twp.	Range
NW	11	94	11
N1/4	11	94	11

Project Number: 2009-129  
 FB: Chickasaw County 2, Pg. 20

File: S:\Projects\2009\2009-129\dwa\2009-129.dwg, 10/7/2009 1:52:41 PM

Section 2-94-11  
As referred to in  
Engr. The Book

FILE NO. 2003-1480

BOOK PAGE

2003 MAY 14 AM 9:28

CINDY MESSERSMITH  
CHICKASAW CO. RECORDER

TeKIPPE ENGINEERING, P.C., 128 South Vine Street, West Union, Iowa 52176 Phone (563) 422-5131

UNITED STATES PUBLIC LAND SURVEY CORNER CERTIFICATE

OF  
Land Survey Monuments situated in Section 11, Township 94 North, Range 11 West of the Fifth Principal Meridian, CHICKASAW County, Iowa. Previously recorded in none in County Recorder's Office.  
(book, page, document number, etc.)

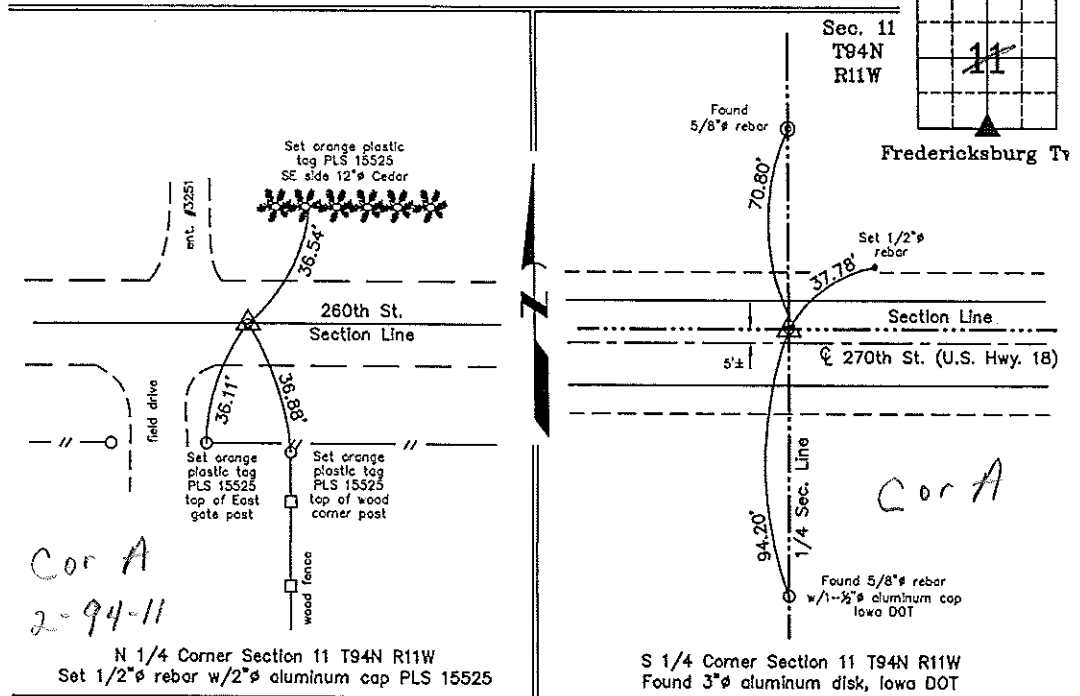
(Show reason for preparing this certificate, the evidence and detailed procedures used in establishing the corner positions and monumentation found or placed.)

Monument Description and Remarks: **N 1/4 Corner Section 11 T94N R11W:** Drag tooth indicated in the Chickasaw County Engineer's Office, Corner 'A', Section 2, was not found. Set 1/2"  $\phi$  rebar w/2"  $\phi$  aluminum cap PLS 15525 by extending a line from the NW Corner down the Centerline of the road across the extension of the 1/4-1/4 Section Line fence and intersecting a line extended from the NE Corner in a similar fashion.  
**S 1/4 Corner Section 11 T94N R11W:** Found 3"  $\phi$  aluminum disk, Iowa DOT, with information obtained from a Corner Stone Survey made Robert R. Burns, Jr., for Iowa DOT Project, F-18-7(19)--21-19, Chickasaw County.

PLAN - VIEW

Project Number 03080.LS  
FB. 48K PG. 7-9

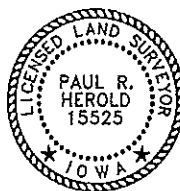
(Show a minimum of three reference ties to durable physical objects, relevant monuments and physical conditions that will enable recovery of the corner.)



Cor A  
2-94-11

N 1/4 Corner Section 11 T94N R11W  
Set 1/2"  $\phi$  rebar w/2"  $\phi$  aluminum cap PLS 15525

S 1/4 Corner Section 11 T94N R11W  
Found 3"  $\phi$  aluminum disk, Iowa DOT



I hereby certify that this land surveying document was prepared by me or under my direct personal supervision and that I am a duly licensed Land Surveyor under the laws of the State of Iowa.  
*Paul R. Harold* 5-12-03  
Paul R. Harold Date  
License number 15525  
My license renewal date is December 31, 2004.  
Sheets covered by this seal: Individual

Corners	Section	Twp.	Range
N 1/4	11	94N	11W
S 1/4	11	94N	11W

Filed 5-19-03  
X:\Section Corners\Sec. 11\11-94-11cw.dwg

County Engineer's Copy