

Herold - Reicks Surveying, 25 1/2 East Main Street, Suite 204, New Hampton, IA 50659, Ph. 641-394-2725

*Sec 2-94-11  
 As referred in  
 Engr Tie Book*

**UNITED STATES PUBLIC LAND SURVEY CORNER CERTIFICATE**

Land Survey Monuments situated in Section <sup>2</sup>11, Township 94 North, Range 11 West of the Fifth Principal Meridian, Chickasaw County, Iowa. Previously recorded in Bk. 155, Pg. 271 in the Chickasaw County Recorder's office.

This certificate is being prepared in compliance with Iowa Code Chapter 355.11 because:

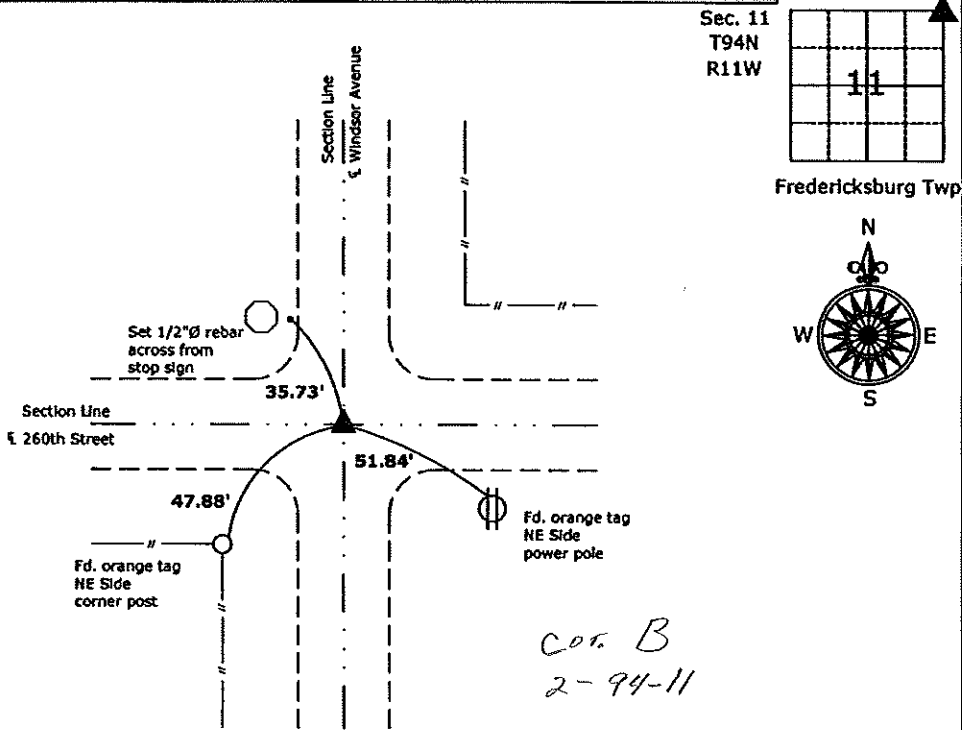
- There is no certificate on file for this corner.
- There are no longer three valid ties of record.
- There are changes to reference ties of record.
- There is change of monumentation of record.
- To clarify description of record monument (ties).

**Monument Description and Remarks:**

**1.) Northeast Corner:** Found 1/2"Ø Iron pin from information obtained from previous section corner certificate.

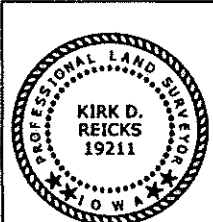
**PLAN - VIEW**

(Show a minimum of three reference ties to durable physical objects, relevant monuments and physical conditions that will enable recovery of the corner.)



*Cor. B  
 2-94-11*

Northeast Corner of Section 11-94-11  
 Found 1/2"Ø Iron pin



I hereby certify that this land surveying document was prepared and the related survey work was performed by me or under my direct personal supervision and that I am a duly licensed Land Surveyor under the laws of the State of Iowa.  
*Kirk D. Reicks* 10-7-09  
 Kirk D. Reicks Date:  
 License number 19211  
 My license renewal date is December 31, 2010.  
 Sheets covered by this seal: Individual sheet only

List Corners to be Indexed			
Corners	Section	Twp.	Range
Northeast	11	94	11

Project Number: 2009-129  
 FB: Chickasaw County 2, Pg. 20

File: S:\Projects\2009-129\dwg\2009-129.dwg, 10/7/2009 1:59:17 PM

UNITED STATES PUBLIC LAND SURVEY CORNER CERTIFICATE

OF

Land Survey Monuments situated in Section 1, Township 94 NORTH, Range 11 WEST, of the Fifth Principal Meridian, CHICKASAW County, Iowa. Previously recorded in NONE in County Recorder's Office.

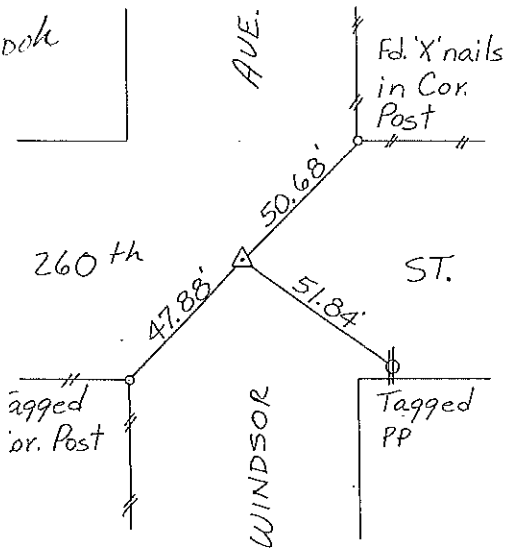
(Show reason for preparing this certificate, the evidence and detailed procedures used in establishing the corner positions and monumentation found or placed.)

Monument Description and Remarks: SW CORNER, SECTION 1-T94N-R11W:  
Found 1/2" φ Iron Pin.  
S1/4 CORNER, SECTION 1-T94N-R11W: Set 1/2" φ Rebar w/cap  
From Ties.

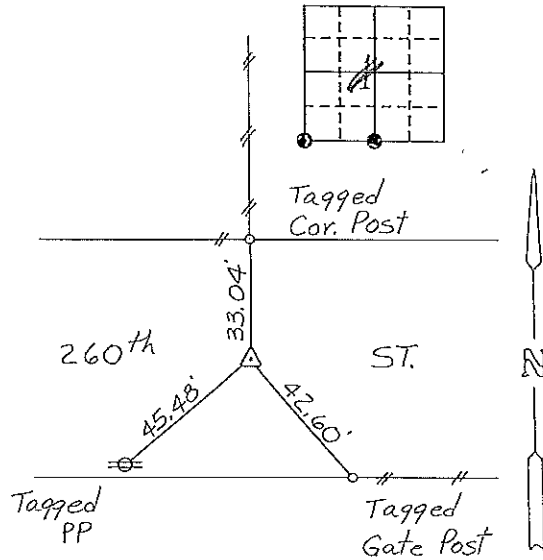
PLAN - VIEW

(Show a minimum of three reference ties to durable physical objects, relevant monuments and physical conditions that will enable recovery of the corner.)

Section 2-94-11  
As referred to in  
Engr. Tie Book



Cor B Sec 2-94-11



Cor A Sec 1

SW CORNER, SECTION 1-T94N-R11W S1/4 CORNER, SECTION 1-T94N-R11W

I hereby certify that the survey work was completed and this certificate was prepared by me or under my direct personal supervision and that I am a duly registered land surveyor under the laws of the state of Iowa.

Signature: Gary L. Casady  
Name typed or printed: Gary L. Casady

Date: 6-29-94 Reg. No. 12532  
My Registration Expires December 31, 1994

SEAL



Corners	Section	Twp	Range
SW	1	94N	11W
Cor B	2-94-11		
S1/4	1	94N	11W
COR. A 1-94-11			

Placed in tie Books  
7/20/94