

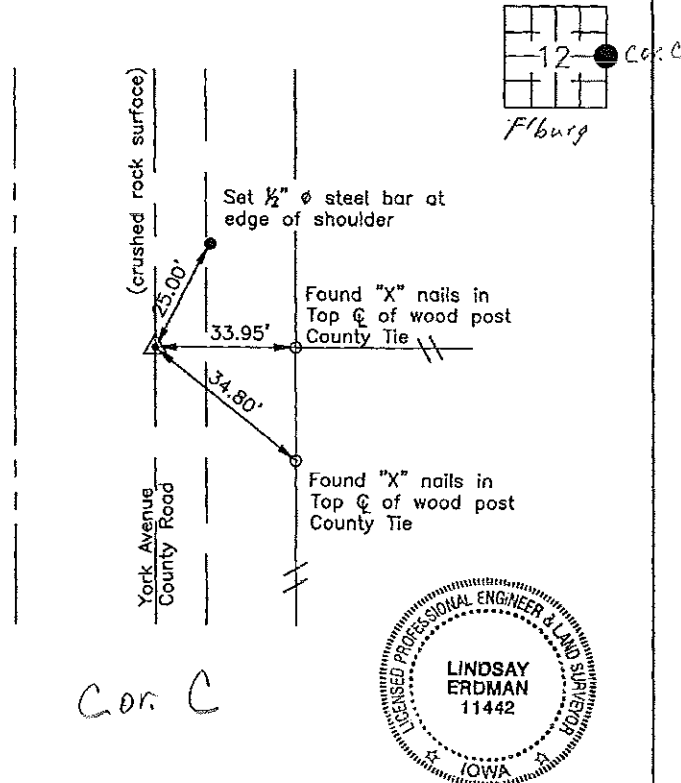
Prepared by: Erdman Engineering, P.C., 708 Commerce Drive, P.O. Box 246, Decorah, Iowa 52101 (563) 382-4194

United States Public Land Survey Corner Certificate

of
 Land Survey Monuments situated in Section 12, Township 94, Range 11 West of
 the 5th Principal Meridian in Chickasaw County, Iowa. Previously recorded in
does not apply in the county Recorder's Office.

Monument Description and Remarks: This certificate is prepared in accordance with Section 193C of the Code of Iowa. No previous certificate has been filed for this corner location. Based on Chickasaw County Engineer's Reference Ties we found two sets of "X" nails in wood fence posts that had been used previously as tie markers. From these ties we made a magnetic locator search of a ±20' diameter area for the iron pin with cap that was set by the IDOT in 1953. We did not find the monument as it appears to have been removed. From the ties we set a ½" diameter steel bar with 1 ½" aluminum cap #11442 that is at the approximate centerline of the county road and in line with the fence line running east as the E ¼ Corner of Section 12, Township 94 North, Range 11 West.

Plan-View



C.C.C.

I hereby certify that this land surveying document was prepared and the related survey work was performed by me or under my direct personal supervision and that I am a duly Licensed Land Surveyor under the laws of the State of Iowa.

Signature: Lindsay Erdman
 Lindsay Erdman, P.E. and P.L.S. Iowa License Number 11442

Date: 2/20/07

My license renewal date is December 31, 2008

| Corner(s) to be Indexed | | | |
|-------------------------|---------|----------|-------|
| Corner | Section | Township | Range |
| E 1/4 | 12 | 94 | 11 |