

UNITED STATES PUBLIC LAND SURVEY CORNER CERTIFICATE

OF

Land Survey Monuments situated in Section 1, Township 94 NORTH, Range 11 WEST, of the Fifth Principal Meridian, CHICKASAW County, Iowa. Previously recorded in NONE in County Recorder's Office.

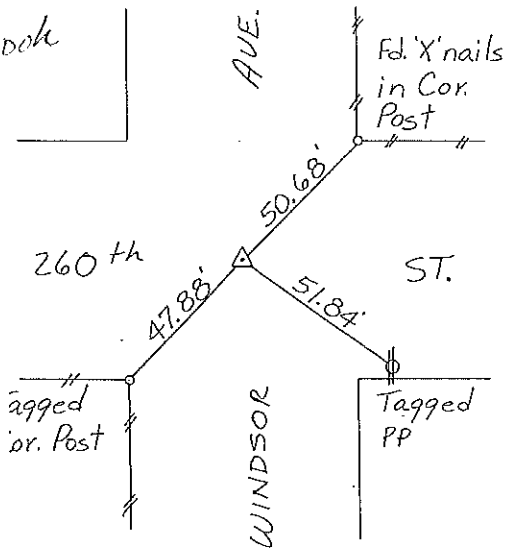
(Show reason for preparing this certificate, the evidence and detailed procedures used in establishing the corner positions and monumentation found or placed.)

Monument Description and Remarks: SW CORNER, SECTION 1-T94N-R11W:
Found 1/2" φ Iron Pin.
S1/4 CORNER, SECTION 1-T94N-R11W: Set 1/2" φ Rebar w/cap
From Ties.

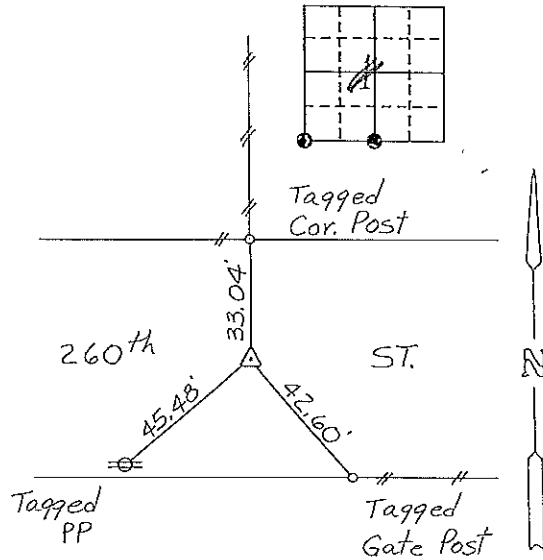
PLAN - VIEW

(Show a minimum of three reference ties to durable physical objects, relevant monuments and physical conditions that will enable recovery of the corner.)

Section 2-94-11
As referred to in
Engr. Tie Book



Cor B Sec 2-94-11



Cor A Sec 1

SW CORNER, SECTION 1-T94N-R11W S1/4 CORNER, SECTION 1-T94N-R11W

I hereby certify that the survey work was completed and this certificate was prepared by me or under my direct personal supervision and that I am a duly registered land surveyor under the laws of the state of Iowa.

Signature: Gary L. Casady
Name typed or printed: Gary L. Casady

Date: 6-29-94 Reg. No. 12532
My Registration Expires December 31, 1994

SEAL



Corners	Section	Twp	Range
SW	1	94N	11W
Cor B	2-94-11		
S1/4	1	94N	11W
COR. A 1-94-11			

Placed in tie Books
7/20/94