

Section 1-94-11
 As referred to in
 Engr. Tie Book

Chickasaw Co. Recorder
 Cindy Messersmith
Fee Book 2007-0372
 02/21/2007 @0908AM
 SCC SEC COR CERT
 Book: Page: # Pages: 1
 Total Fees: \$7.00

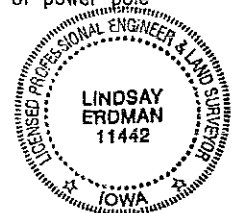
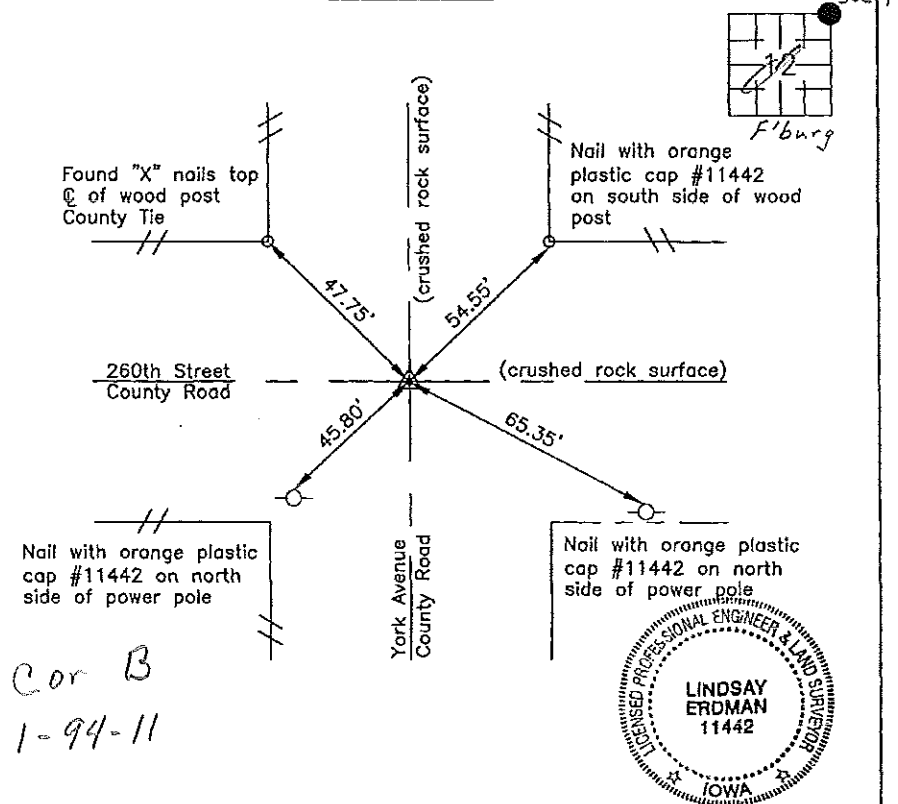
Prepared by: Erdman Engineering, P.C., 708 Commerce Drive, P.O. Box 246, Decorah, Iowa 52101 (563) 382-4194

United States Public Land Survey Corner Certificate
 of 1

Land Survey Monuments situated in Section 12, Township 94, Range 11 West of the 5th Principal Meridian in Chickasaw County, Iowa. Previously recorded in does not apply in the county Recorder's Office.

Monument Description and Remarks: This certificate is prepared in accordance with Section 193C of the Code of Iowa. No previous certificate has been filed for this corner location. Based on Chickasaw County Engineer's Reference Ties we found a set of "X" nails in a wood post that have been used previously as a tie marker. From this remaining tie we found a 5/8" diameter steel bar at the approximate centerline-centerline intersection of the county roads that matches the description of the monument set previously at the NE Corner of Section 12, Township 94 North, Range 11 West.

Plan-View



I hereby certify that this land surveying document was prepared and the related survey work was performed by me or under my direct personal supervision and that I am a duly licensed Land Surveyor under the laws of the State of Iowa.

Signature: [Signature]
 Lindsay Erdman, P.E. and P.L.S. Iowa License Number 11442

Date: 2/20/07

My license renewal date is December 31, 2008

Corner(s) to be indexed

Corner	Section	Township	Range
NE	12	94	11