

PREPARED BY & RETURN TO ERIC MILLER, SNYDER & ASSOCIATES, INC. 2727 SW SNYDER ROAD, ANKENY, IOWA 50023 (515) 964-2020

UNITED STATES PUBLIC LAND SURVEY CORNER CERTIFICATE OF

Land Survey Monuments situated in Section 13, Township 94 N, Range 11 W, of the Fifth Principal Meridian, CHICKASAW, County, Iowa.
 Previously recorded in N/A in County Recorder's Office.
 (book, page, document number, ect.)

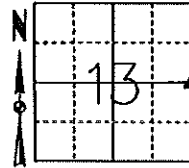
(Show reason for preparing this certificate, the evidence and detailed procedures used in establishing the corner positions and monumentation found or placed.)

Monument Description and Remarks:
EAST 1/4 CORNER SECTION 13-94-11

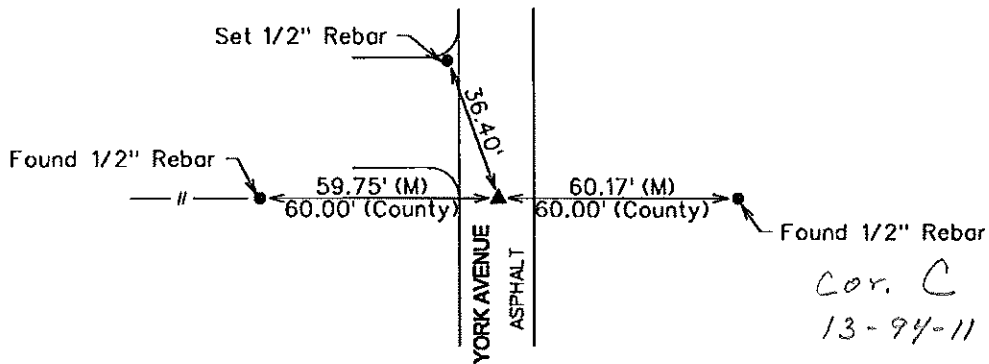
NO PREVIOUS RECORD OF MONUMENTATION WAS FOUND. USED ENGINEER'S TIES, METAL DETECTOR AND VISUAL SEARCH OF THE AREA TO FIND 1" PINCH PIPE IN Ⓞ OF YORK AVENUE. ONLY TWO REMAINING ENGINEER'S TIES. VERIFIED LOCATION OF MONUMENT WITH REMAINING ENGINEER'S TIES AND SURROUNDING FIELD EVIDENCE AND ACCEPTED MONUMENT AS SECTION CORNER. THIS CERTIFICATE IS BEING FILED BECAUSE THERE IS NO CERTIFICATE FOR THE CORNER ON FILE.

Plan-View

(Show a minimum of three reference ties to durable physical objects, relevant monuments and physical conditions that will enable recovery of the corner.)



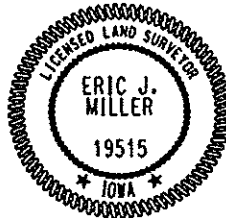
**EAST 1/4 CORNER
 FOUND 1" PINCH PIPE**



NOTE: ALL DISTANCES MEASURED HORIZONTAL UNLESS OTHERWISE NOTED.

PS
 2/28/2013

S&A Fnd109



I hereby certify that this land surveying document was prepared and the related survey work was performed by me or under my direct personal supervision and that I am a duly licensed Land Surveyor under the laws of the State of Iowa.
Eric J. Miller 2-26-13
 Eric J. Miller, PLS Date
 License Number 19515
 My License Renewal Date is December 31, 2014
 Pages or sheets covered by this seal:
 SHEET 1 OF 1

List Corners to be Indexed

Corners	Section	Twp	Range
EAST 1/4 CORNER	13	94	11
WEST 1/4 CORNER (FAYETTE CO)	18	94	10