

PREPARED BY / RETURN TO: KENNETH D. STARK IOWA DEPARTMENT OF TRANSPORTATION 1420 4th ST. SE MASON CITY, IA 50401 641-423-7684

UNITED STATES PUBLIC LAND SURVEY CORNER CERTIFICATE

OF

Land Survey Monuments situated in Section 13, Township 94N, Range 11W
 of the Fifth Principal Meridian, CHICKASAW County, Iowa.

Previously recorded in NA in County Recorder's Office.
(book, page, document number, etc.)

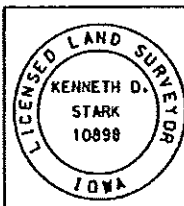
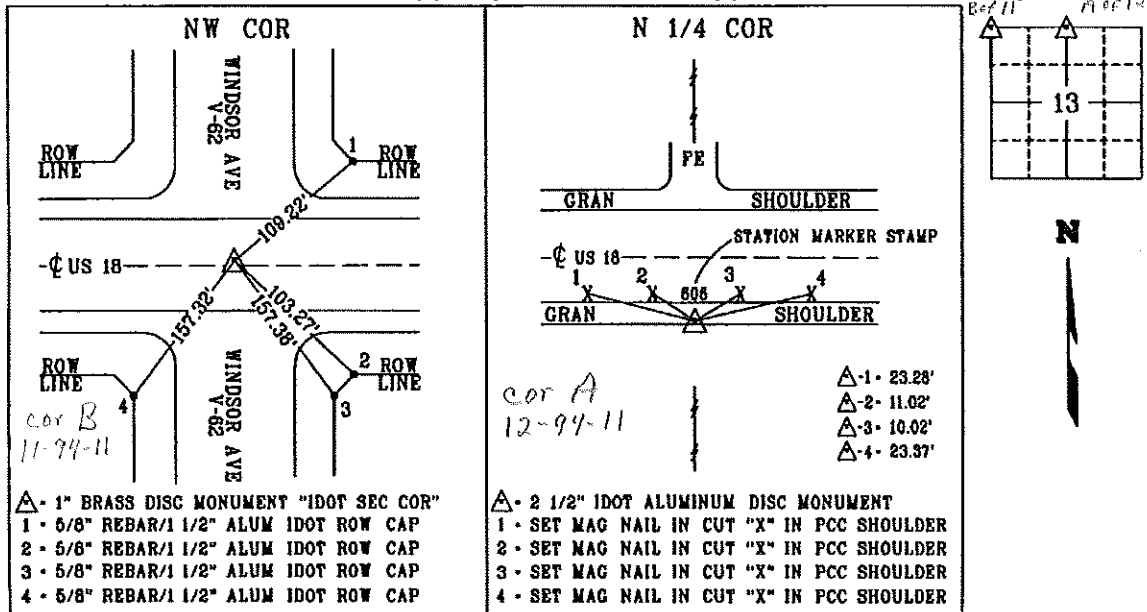
(Show reason for preparing this certificate, the evidence and detailed procedures used in establishing the corner positions and monumentation found or placed.)

Monument Description and Remarks: NW COR -REPLACED PREVIOUSLY FOUND 2 1/2" IDOT ALUMINUM DISC MONUMENT IN ACC WITH A 1" BRASS DISC MONUMENT "IDOT SEC COR" IN PCC PAVEMENT 0.78' NORTH OF C AFTER PCC OVERLY PROJECT NHSX-018-7(58)--3H-19 PER IDOT AS BUILT PLAN FR-18-7(17)--2G-19. REASON FOR CERT: CHANGE TO MONUMENT & NO CERT OF RECORD.

N 1/4 COR - FOUND 2 1/2" IDOT ALUMINUM DISC MONUMENT ~22' SOUTH OF C, 15" DEEP PER IDOT AS BUILT PLAN FR-18-7(17)--2G-19. REASON FOR CERT: NO CERT ON RECORD.

PLAN - VIEW

(Show a minimum of three reference ties to durable physical objects, relevant monuments and physical conditions that will enable recovery of the corner.)



I hereby certify that this land surveying document was prepared and the related survey work was performed by me or under my personal supervision and that I am a duly licensed Land Surveyor under the laws of the state of Iowa.

Kenneth D. Stark 07-02-13
 Kenneth D. Stark Date
 License number 10898
 My license renewal date is December 31, 2013
 Pages or sheets covered by this set: 1

List Corners to be Indexed

Corner	Section	Township	Range
NW CORNER	13	94N	11W
N 1/4 CORNER	13	94N	11W

Section 12-94-11
As referred to in
Eng. Tie Book

Chickasaw Co. Recorder
Cindy Messersmith
Fee Book 2008-1419
07/21/2008 @0200PM
SCC SEC COR CERT
Book: Page: # Pages: 1
Total Fees: \$7.00

Herold - Reicks Surveying, 25 1/2 East Main Street, Suite 204, New Hampton, IA 50659, Ph. 641-394-2725

UNITED STATES PUBLIC LAND SURVEY CORNER CERTIFICATE

Land Survey Monuments situated in Section ¹²**13**, Township **94** North, Range **11** West of the Fifth Principal Meridian, **Chickasaw** County, Iowa. Previously not recorded in the Chickasaw County Recorder's office.

This certificate is being prepared in compliance with Iowa Code Chapter 355.11 because:

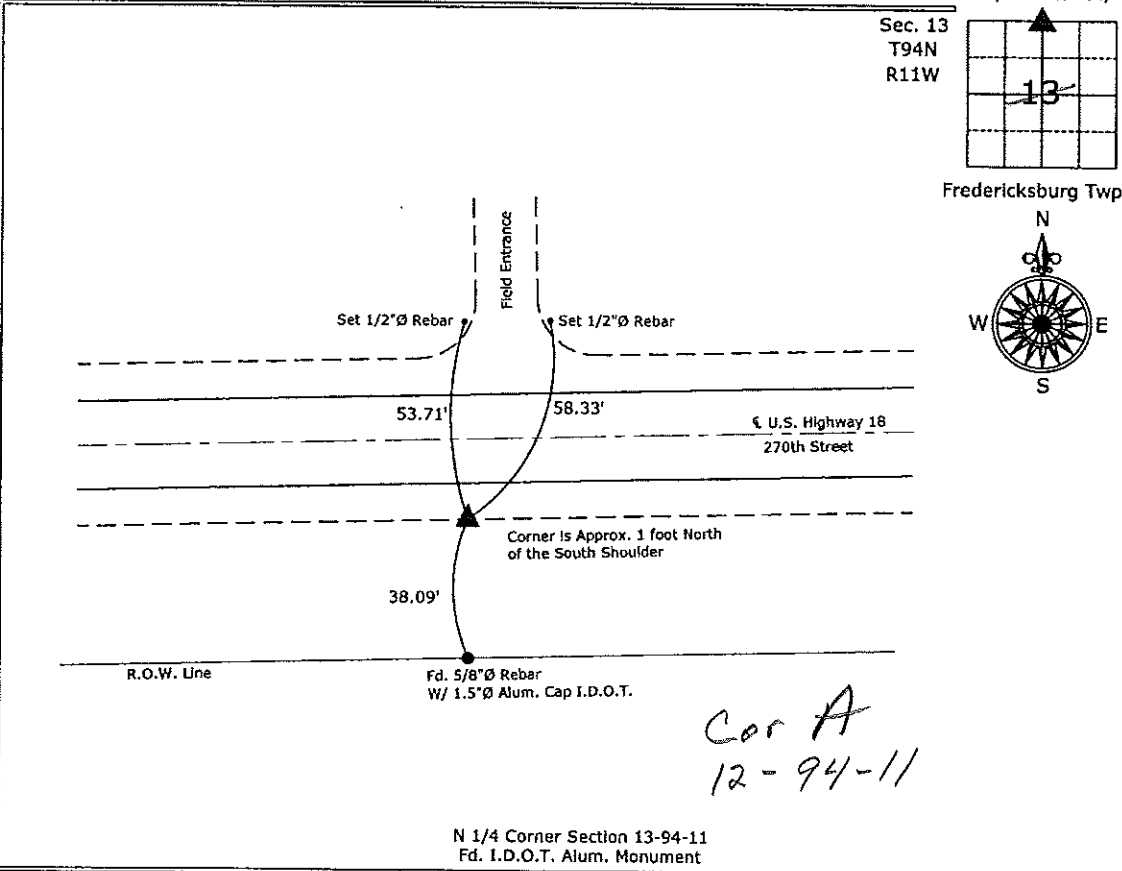
- There is no certificate on file for this corner.
- There are no longer three valid ties of record.
- There are changes to reference ties of record.
- There is change of monumentation of record.
- To clarify description of record monument (ties).

Monument Description and Remarks:

N 1/4 Corner Section 13-94-11: Fd. I.D.O.T. Alum. Monument, Corner located from information on a Iowa Department of Transportation Land Corner Survey, made by Robert R. Burns, signed February 12, 1979, on this Plat the monument was indicated that it was a Concrete Monument, it was later raised and the Alum. Monu. was set by the I.D.O.T. as part of a shoulder widening project.

PLAN - VIEW

(Show a minimum of three reference ties to durable physical objects, relevant monuments and physical conditions that will enable recovery of the corner.)



I hereby certify that this land surveying document was prepared and the related survey work was performed by me or under my direct personal supervision and that I am a duly licensed Land Surveyor under the laws of the State of Iowa.

Paul R. Herold 7-21-08
Paul R. Herold Date:
License number 15525
My license renewal date is December 31, 2008.
Sheets covered by this seal: Individual sheet only

List Corners to be Indexed			
Corners	Section	Twp.	Range
N 1/4	13	94	11
Project Number: 2008-077			
FB: Chickasaw County 1, Pg. 73			

File: S:\Projects\2008-077\dwg\2008-077.dwg, 7/21/2008 1:01:55 PM