

DOCUMENT No. 12217 FILED FOR RECORD THE 7th DAY OF May STATE OF IOWA, CHICKASAW COUNTY.  
 RECORDING FEE \$ 5.00 19 92 AT 11:49 Mary C. Murray Record  
 TRANSFER FEE \$ - O'CLOCK A.M. BOOK 149 PAGE 336 BY MARY C. MURRAY Dep't

**UNITED STATES PUBLIC LAND SURVEY CORNER CERTIFICATE**

OF

Land Survey Monuments situated in Section 15 <sup>16</sup>, Township 94 North, Range 11 West, of the Fifth Principal Meridian, CHICKASAW County, Iowa.  
 Previously recorded in Does Not Apply in County Recorder's Office.

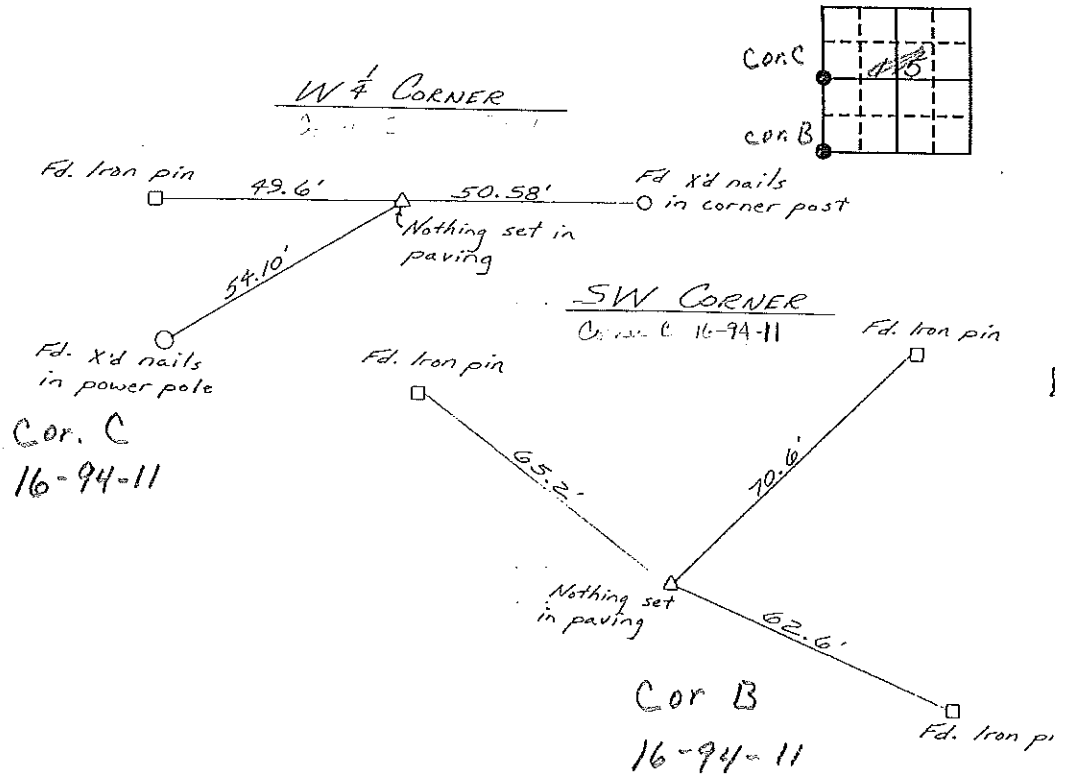
(Show reason for preparing this certificate, the evidence and detailed procedures used in establishing the corner positions and monumentation found or placed.)

Monument Description and Remarks: W 1/4 Set from county ties, Nothing set in paving. SW set from county ties, Nothing set in paving

Section 16-94-11  
 As referred to in  
 Engr. Tric Book

**PLAN - VIEW**

(Show a minimum of three reference ties to durable physical objects, relevant monuments and physical conditions that will enable recovery of the corner.)



I hereby certify that the survey work was completed and this certificate was prepared by me or under my direct personal supervision and that I am a duly registered land surveyor under the laws of the state of Iowa.

Signature: L. P. Erdman  
 Name typed or printed: L. P. ERDMAN  
 Date: 4-10-92 Reg. No. 2886

SEAL



Corners	List Corners to be Indexed Section	Twp	Range
W 1/4	15	94	11
SW	15	94	11

Placed in Tric Book 5/92