

PREPARED BY / RETURN TO: KENNETH D. STARK IOWA DEPARTMENT OF TRANSPORTATION 1420 4th ST. SE MASON CITY, IA 50401 641-423-7584

**UNITED STATES PUBLIC LAND SURVEY CORNER CERTIFICATE**

OF  
 10

Land Survey Monuments situated in Section 14, Township 94N, Range 11W  
 of the Fifth Principal Meridian, CHICKASAW County, Iowa.

Previously recorded in BOOK 151, PAGE 48 in County Recorder's Office.  
(book, page, document number, etc.)

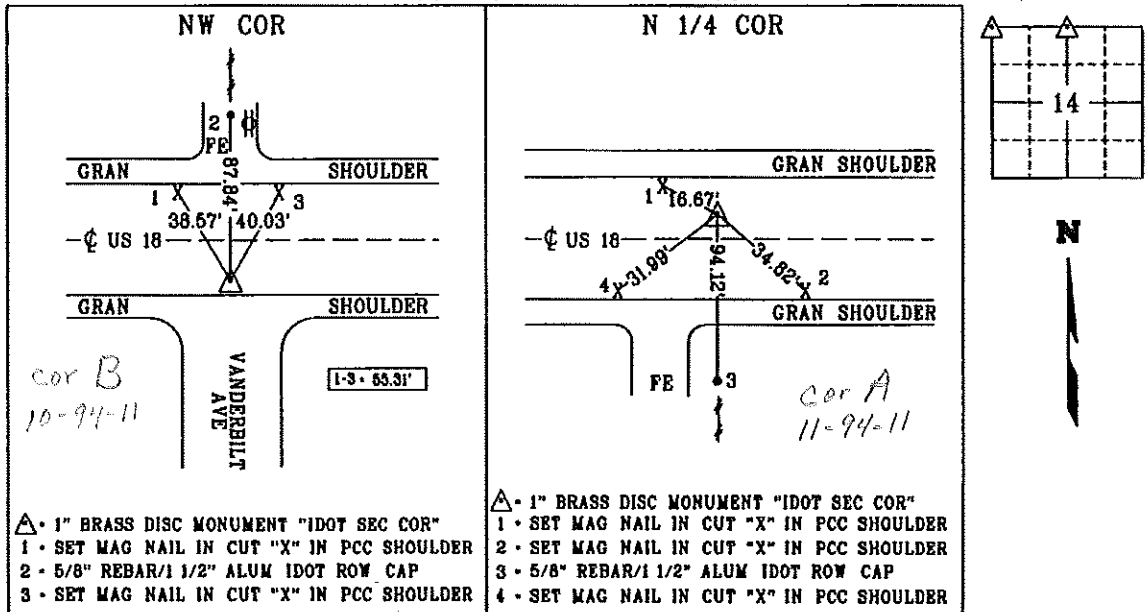
(Show reason for preparing this certificate, the evidence and detailed procedures used in establishing the corner positions and monumentation found or placed.)

Monument Description and Remarks: NW COR - REPLACED PREVIOUSLY FOUND 2 1/2" IDOT ALUMINUM DISC MONUMENT IN ACC WITH A 1" BRASS DISC MONUMENT "IDOT SEC COR" IN PCC PAVEMENT 12.47' SOUTH OF C AFTER PCC OVERLAY PROJECT NHSX-018-7(58)--3H-19 PER PREVIOUS CERT BOOK 151, PAGE 48. REASON FOR CERT: CHANGE TO MONUMENT.

N 1/4 COR - REPLACED PREVIOUSLY FOUND 2 1/2" IDOT ALUMINUM DISC MONUMENT IN ACC WITH A 1" BRASS DISC MONUMENT "IDOT SEC COR" IN PCC PAVEMENT 4.85' NORTH OF C AFTER PCC OVERLAY PROJECT NHSX-018-7(58)--3H-19 PER IDOT AS BUILT PLAN FR-18-7(17)--2G-19. REASON FOR CERT: CHANGE TO MONUMENT AND NO CERT OF RECORD.

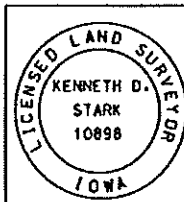
**PLAN - VIEW**

(Show a minimum of three reference ties to durable physical objects, relevant monuments and physical conditions that will enable recovery of the corner.)



- ▲ 1" BRASS DISC MONUMENT "IDOT SEC COR"
- 1 - SET MAG NAIL IN CUT "X" IN PCC SHOULDER
  - 2 - 5/8" REBAR/1 1/2" ALUM IDOT ROW CAP
  - 3 - SET MAG NAIL IN CUT "X" IN PCC SHOULDER

- ▲ 1" BRASS DISC MONUMENT "IDOT SEC COR"
- 1 - SET MAG NAIL IN CUT "X" IN PCC SHOULDER
  - 2 - SET MAG NAIL IN CUT "X" IN PCC SHOULDER
  - 3 - 5/8" REBAR/1 1/2" ALUM IDOT ROW CAP
  - 4 - SET MAG NAIL IN CUT "X" IN PCC SHOULDER



I hereby certify that this land surveying document was prepared and the related survey work was performed by me or under my personal supervision and that I am a duly licensed Land Surveyor under the laws of the state of Iowa.  
*Kenneth D. Stark* 07-02-13  
 Kenneth D. Stark Date  
 License number 10898  
 My License renewal date is December 31, 2013  
 Pages or sheets covered by this seal: 1

List Corners to be Indexed

Corner	Section	Township	Range
NW CORNER	14	94N	11W
N 1/4 CORNER	14	94N	11W

TIED: DM DRAWN: ME

Section 2-94-11  
 As referred to in  
 Engr. The Book

FILE NO. 2003-1480

BOOK PAGE

2003 MAY 14 AM 9:28

CINDY MESSERSMITH  
 CHICKASAW CO. RECORDER

TeKIPPE ENGINEERING, P.C., 128 South Vine Street, West Union, Iowa 52176 Phone (563) 422-5131

UNITED STATES PUBLIC LAND SURVEY CORNER CERTIFICATE

OF  
 Land Survey Monuments situated in Section 11, Township 94 North, Range  
11 West of the Fifth Principal Meridian, CHICKASAW County, Iowa.  
 Previously recorded in none in County Recorder's Office.  
(book, page, document number, etc.)

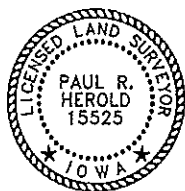
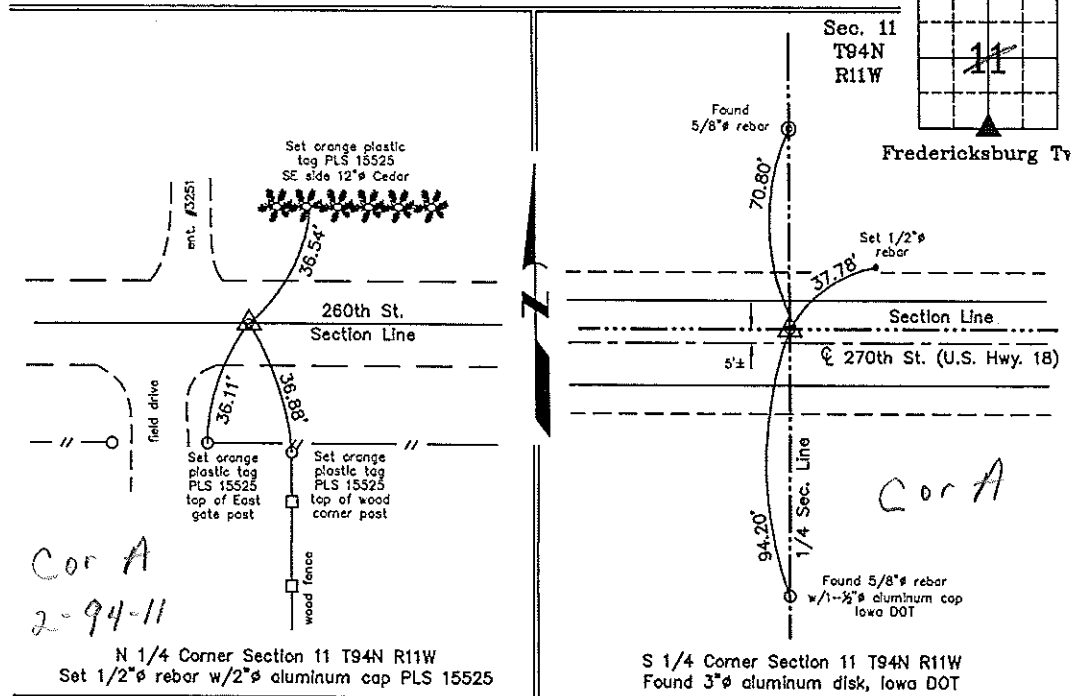
(Show reason for preparing this certificate, the evidence and detailed procedures used in establishing the corner positions and monumentation found or placed.)

Monument Description and Remarks: **N 1/4 Corner Section 11 T94N R11W:** Drag tooth indicated in the Chickasaw County Engineer's Office, Corner 'A', Section 2, was not found. Set 1/2"Ø rebar w/2"Ø aluminum cap PLS 15525 by extending a line from the NW Corner down the Centerline of the road across the extension of the 1/4-1/4 Section Line fence and intersecting a line extended from the NE Corner in a similar fashion.  
**S 1/4 Corner Section 11 T94N R11W:** Found 3"Ø aluminum disk, Iowa DOT, with information obtained from a Corner Stone Survey made Robert R. Burns, Jr., for Iowa DOT Project, F-18-7(19)--21-19, Chickasaw County.

PLAN - VIEW

Project Number 03080.LS  
 FB. 46K PG. 7-9

(Show a minimum of three reference ties to durable physical objects, relevant monuments and physical conditions that will enable recovery of the corner.)



I hereby certify that this land surveying document was prepared by me or under my direct personal supervision and that I am a duly licensed Land Surveyor under the laws of the State of Iowa.

*Paul R. Harold* 5-12-03  
 Paul R. Harold Date  
 License number 15525  
 My license renewal date is December 31, 2004.  
 Sheets covered by this seal: Individual

Corners	Section	Twp.	Range
N 1/4	11	94N	11W
S 1/4	11	94N	11W

Filed 5-19-03

X:\Section Corners\Sec. 11\11-94-11cw.dwg

County Engineer's Copy