

PREPARED BY / RETURN TO: KENNETH D. STARK IOWA DEPARTMENT OF TRANSPORTATION 1420 4th ST. SE MASON CITY, IA 50401 641-423-7684

UNITED STATES PUBLIC LAND SURVEY CORNER CERTIFICATE

OF

Land Survey Monuments situated in Section 13, Township 94N, Range 11W
 of the Fifth Principal Meridian, CHICKASAW County, Iowa.

Previously recorded in NA in County Recorder's Office.
(book, page, document number, etc.)

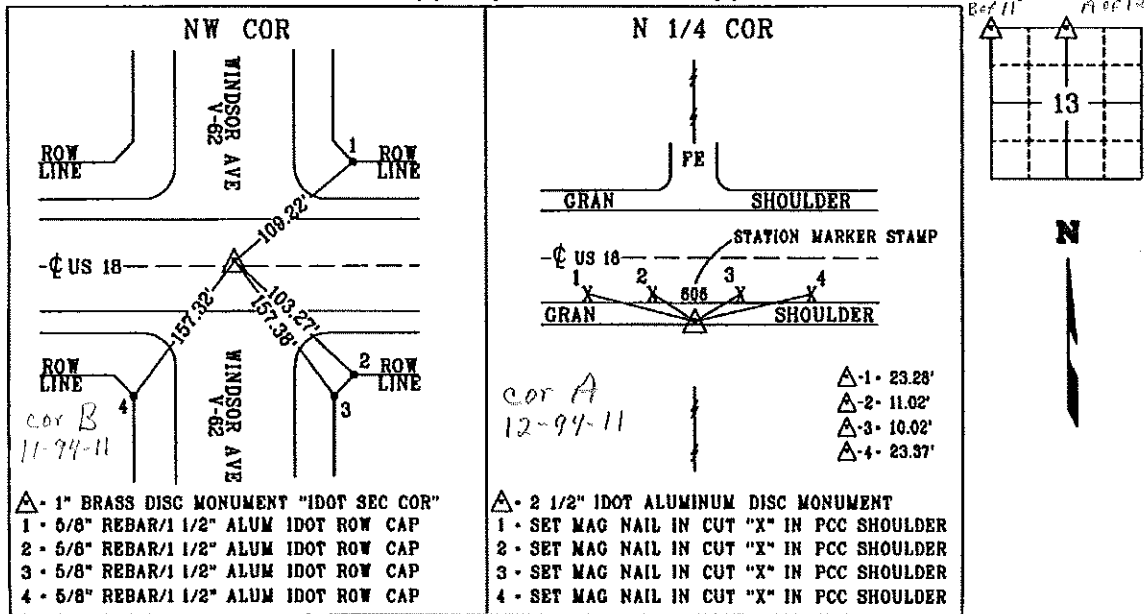
(Show reason for preparing this certificate, the evidence and detailed procedures used in establishing the corner positions and monumentation found or placed.)

Monument Description and Remarks: NW COR -REPLACED PREVIOUSLY FOUND 2 1/2" IDOT ALUMINUM DISC MONUMENT IN ACC WITH A 1" BRASS DISC MONUMENT "IDOT SEC COR" IN PCC PAVEMENT 0.78' NORTH OF C AFTER PCC OVERLY PROJECT NHSX-018-7(58)--3H-19 PER IDOT AS BUILT PLAN FR-18-7(17)--2G-19. REASON FOR CERT: CHANGE TO MONUMENT & NO CERT OF RECORD.

N 1/4 COR - FOUND 2 1/2" IDOT ALUMINUM DISC MONUMENT ~22' SOUTH OF C, 15" DEEP PER IDOT AS BUILT PLAN FR-18-7(17)--2G-19. REASON FOR CERT: NO CERT ON RECORD.

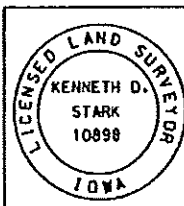
PLAN - VIEW

(Show a minimum of three reference lines to durable physical objects, relevant monuments and physical conditions that will enable recovery of the corner.)



- △ - 1" BRASS DISC MONUMENT "IDOT SEC COR"**
- 1 - 5/8" REBAR/1 1/2" ALUM IDOT ROW CAP
 - 2 - 5/8" REBAR/1 1/2" ALUM IDOT ROW CAP
 - 3 - 5/8" REBAR/1 1/2" ALUM IDOT ROW CAP
 - 4 - 5/8" REBAR/1 1/2" ALUM IDOT ROW CAP

- △ - 2 1/2" IDOT ALUMINUM DISC MONUMENT**
- 1 - SET MAG NAIL IN CUT "X" IN PCC SHOULDER
 - 2 - SET MAG NAIL IN CUT "X" IN PCC SHOULDER
 - 3 - SET MAG NAIL IN CUT "X" IN PCC SHOULDER
 - 4 - SET MAG NAIL IN CUT "X" IN PCC SHOULDER



I hereby certify that this land surveying document was prepared and the related survey work was performed by me or under my personal supervision and that I am a duly licensed Land Surveyor under the laws of the state of Iowa.

Kenneth D. Stark 07-02-13
 Kenneth D. Stark Date
 License number 10898
 My license renewal date is December 31, 2013
 Pages or sheets covered by this set: 1

List Corners to be Indexed

Corner	Section	Township	Range
NW CORNER	13	94N	11W
N 1/4 CORNER	13	94N	11W

703 MAY 14 AM 9:26

CINDY MESSERSMITH
 CHICKASAW CO. RECORDER

TEKIPPE ENGINEERING, P.C., 128 South Vine Street, West Union, Iowa 52175 Phone (563) 422-5131

UNITED STATES PUBLIC LAND SURVEY CORNER CERTIFICATE

OF

Land Survey Monuments situated in Section 11, Township 94 North, Range 11 West of the Fifth Principal Meridian, CHICKASAW County, Iowa. Previously recorded in none in County Recorder's Office.
 (book, page, document number, etc.)

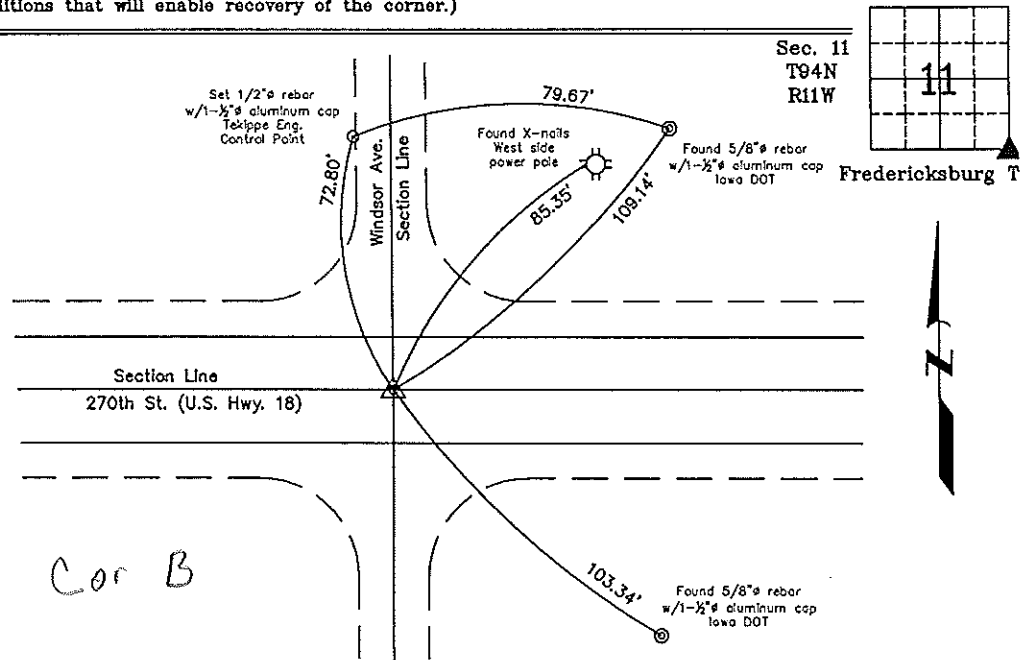
(Show reason for preparing this certificate, the evidence and detailed procedures used in establishing the corner positions and monumentation found or placed.)

Monument Description and Remarks: SE Corner Section 11 T94N R11W: Found 3"Ø aluminum disk, Iowa DOT, with information obtained from a Corner Stone Survey made by Robert R. Burns, Jr., for Iowa DOT Project F-18-7(19)--21-19, Chickasaw County.

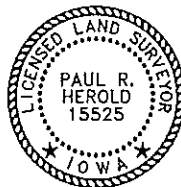
PLAN - VIEW

Project Number 03090.LS
 FB. 46K PG. 7-9

(Show a minimum of three reference ties to durable physical objects, relevant monuments and physical conditions that will enable recovery of the corner.)



SE Corner Section 11 T94N R11W
 Found 3"Ø aluminum disk, Iowa DOT



I hereby certify that this land surveying document was prepared and the related survey work was performed by me or under my direct personal supervision and that I am a duly licensed Land Surveyor under the laws of the State of Iowa.

Paul R. Herold 5-12-03
 Date
 Paul R. Herold
 License number 15525
 My license renewal date is December 31, 2004.
 Sheets covered by this seal: Individual

List Corners to be Indexed			
Corners	Section	Twp.	Range
SE	11	94N	11W

Filed 5-19-03

X:\Section Corners\Sec. 11\11-94-11y.dwg

County Engineer's Copy