

Chickasaw Co. Recorder
 Cindy Messersmith
Fee Book 2013-1089
 07/08/2013 @0133PM
 SCC SEC COR CERT
 BOOK: Page: # Pages: 1
 Total Fees: \$7.00

PREPARED BY / RETURN TO: KENNETH D. STARK IOWA DEPARTMENT OF TRANSPORTATION 1420 4th ST. SE MASON CITY, IA 50401 641-423-7684

UNITED STATES PUBLIC LAND SURVEY CORNER CERTIFICATE

OF
10

Land Survey Monuments situated in Section 15, Township 94N, Range 11W
 of the Fifth Principal Meridian, CHICKASAW County, Iowa.

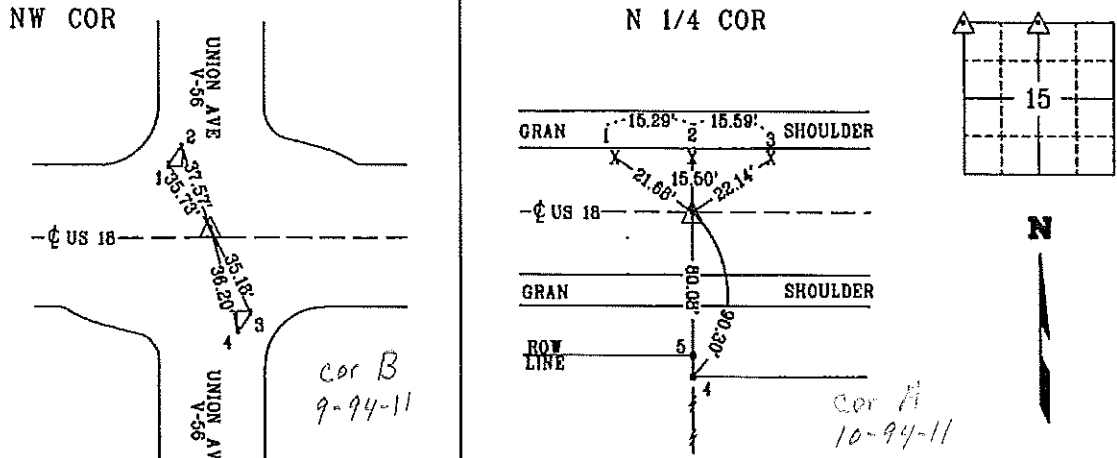
Previously recorded in BOOK 161, PAGE 231 in County Recorder's Office.
(book, page, document number, etc.)

(Show reason for preparing this certificate, the evidence and detailed procedures used in establishing the corner positions and monumentation found or placed.)

Monument Description and Remarks: NW COR - REPLACED PREVIOUSLY FOUND 2 1/2" IDOT ALUMINUM DISC MONUMENT IN ACC WITH A 1" BRASS DISC MONUMENT "IDOT SEC COR" IN PCC PAVEMENT 1.19' NORTH OF C AFTER PCC OVERLAY PROJECT NHSX-018-7(58)-3H-19 PER PREVIOUS CERT BOOK 161, PAGE 231. REASON FOR CERT: CHANGE TO MONUMENT.
N 1/4 COR - REPLACED PREVIOUSLY FOUND P-K NAIL IN ACC PAVEMENT WITH A 1" BRASS DISC MONUMENT "IDOT SEC COR" IN PCC PAVEMENT ON C AFTER PCC OVERLAY PROJECT NHSX-018-7(58)-3H-19 PER IDOT AS BUILT PLAN FR-18-7(17)-2G-19. REASON FOR CERT: CHANGE TO MONUMENT AND NO CERT OF RECORD.

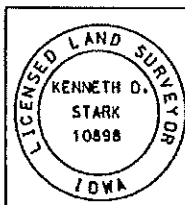
PLAN - VIEW

(Show a minimum of three reference ties to durable physical objects, relevant monuments and physical conditions that will enable recovery of the corner.)



- △ - 1" BRASS DISC MONUMENT "IDOT SEC COR"
- 1 - CUT "X" ON PCC ISLAND CURB NOSE
 - 2 - CUT "X" ON PCC ISLAND CURB NOSE
 - 3 - CUT "X" ON PCC ISLAND CAP
 - 4 - CUT "X" ON PCC ISLAND CAP

- △ - 1" BRASS DISC MONUMENT "IDOT SEC COR"
- 1 - SET MAG NAIL IN CUT "X" IN PCC SHOULDER
 - 2 - SET MAG NAIL IN CUT "X" IN PCC SHOULDER
 - 3 - SET MAG NAIL IN CUT "X" IN PCC SHOULDER
 - 4 - 5/8" REBAR/1 1/2" PUNCHED ALUM IDOT ROW CAP
 - 5 - 5/8" REBAR/1 1/2" PUNCHED ALUM IDOT ROW CAP



I hereby certify that this land surveying document was prepared and the related survey work was performed by me or under my personal supervision and that I am a duly licensed Land Surveyor under the laws of the state of Iowa.
Kenneth D. Stark
 Kenneth D. Stark Date 07-02-13
 License number 10898
 My License renewal date is December 31, 2013
 Pages or sheets covered by this seal. 1

List Corners to be Indexed			
Corner	Section	Township	Range
NW CORNER	15	94N	11W
N 1/4 CORNER	15	94N	11W

TIED: CM DRAWN: ME