

DOCUMENT No. 00049 FILED FOR RECORD THE 5th DAY OF July 1996 AT 8:35 O'CLOCK A.M. BOOK 161 DEED PAGE 232 BY Lindsay Erdman LEITHA M. ROSS, Recorder Deputy

Prepared by: Erdman Engineering P.C. 708 Commerce Drive, P.O. Box 246, Decorah Iowa, 52101  
 Phone (319)382-4194, Fax (319)382-3623

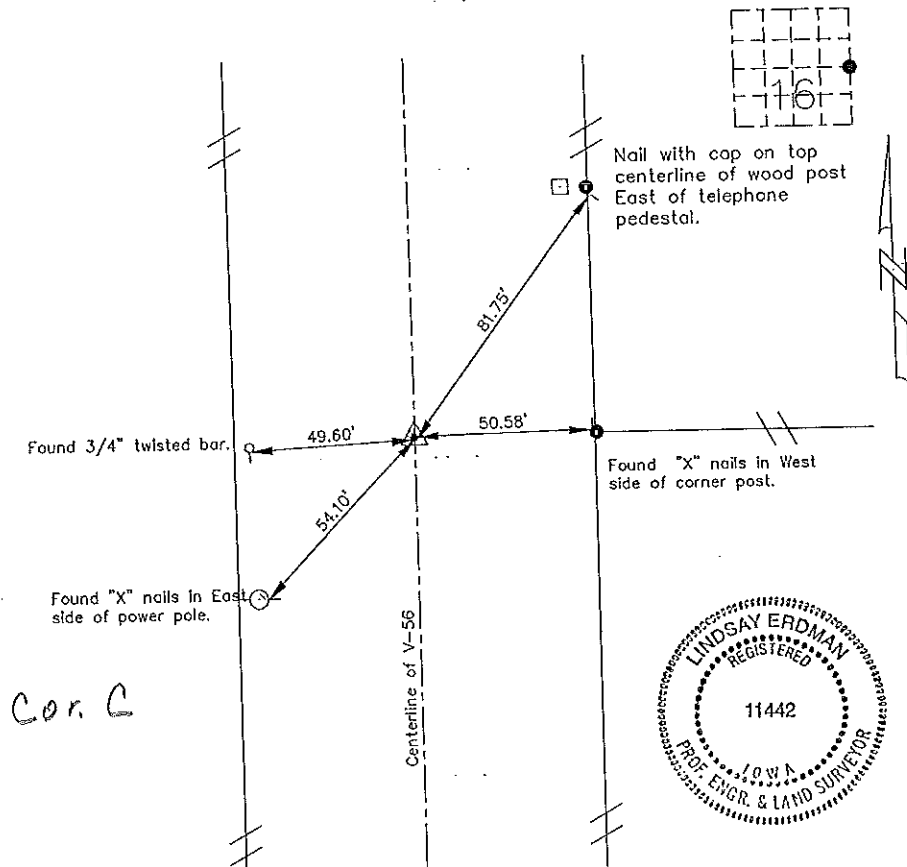
### United States Public Land Survey Corner Certificate of

Land Survey Monuments situated in Section 16 Township, 94 Range, 11 of the Fifth Principle Meridian, Chickasaw County, Iowa. Previously recorded in does not apply in County Recorders Office.

(Show reason for preparing this certificate, the evidence and detailed procedures used in establishing the corner positions and monumentation found or placed.)

Monument Description and Remarks: This certificate is prepared in accordance with Section 355.11 of the 1995 Code of Iowa. No previous certificate has been filed for this corner location. Based on County Engineer's Reference ties we found a 3/4" twisted bar, "X" nails in a power pole and in a wood post all used as tie markers. We found no monumentation from these ties so we cut an "X" in the PCC pavement ±0.1' West of the centerline joint from the county ties.

Plan-View  
 (Show a minimum of three reference ties to durable physical objects, relevant monuments and physical conditions that will enable recovery of the corner.)



Cor. C

I hereby certify that the survey work was completed and this certificate was prepared by me or under by direct supervision and that I am a duly registered land surveyor under the laws of the State of Iowa.

Signature: Lindsay Erdman  
 Lindsay Erdman, P.E. and L.S.

Date: 7/2/96 Reg. No. 11442

My license will be renewed January 1, 1997

Corners	Section	Twp.	Range
E 1/4	16	94	11

DOCUMENT No. 12217 FILED FOR RECORD THE 7th DAY OF May STATE OF IOWA, CHICKASAW COUNTY.  
 RECORDING FEE \$ 5.00 19 92 AT 11:49 Mary C. Murray Record  
 TRANSFER FEE \$ - O'CLOCK A.M. BOOK 149 PAGE 336 BY MARY C. MURRAY Dep't

**UNITED STATES PUBLIC LAND SURVEY CORNER CERTIFICATE**

OF

Land Survey Monuments situated in Section 15 <sup>16</sup>, Township 94 North, Range 11 West, of the Fifth Principal Meridian, CHICKASAW County, Iowa.  
 Previously recorded in Does Not Apply in County Recorder's Office.

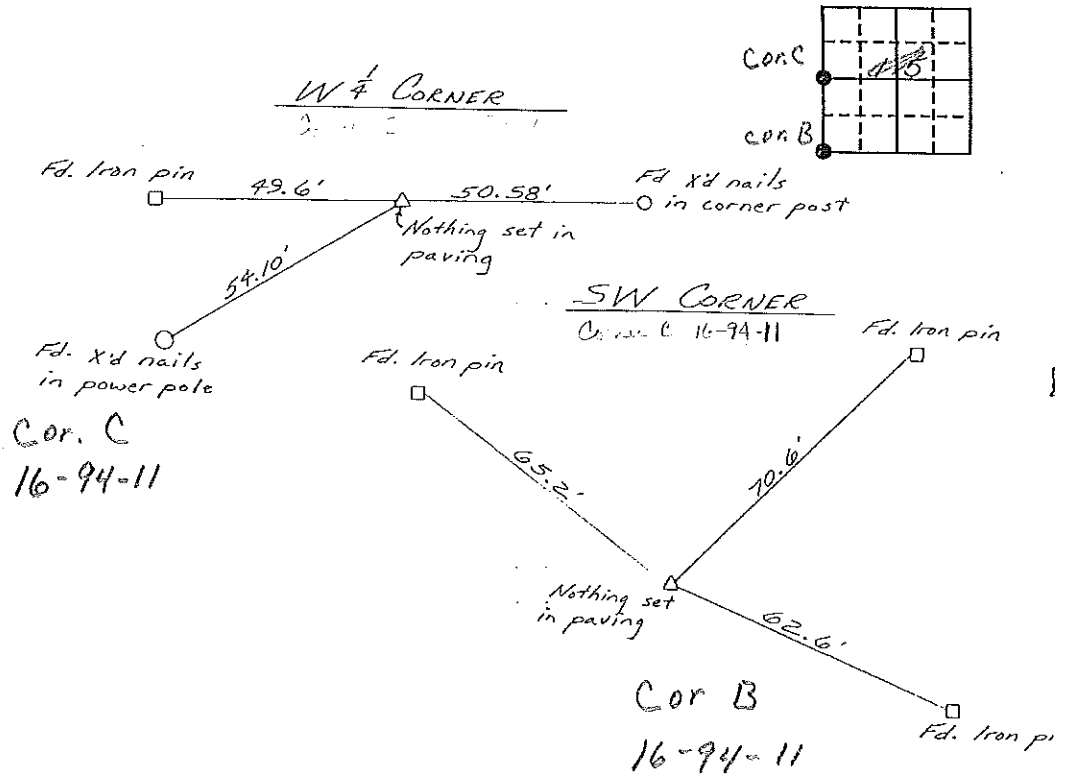
(Show reason for preparing this certificate, the evidence and detailed procedures used in establishing the corner positions and monumentation found or placed.)

Monument Description and Remarks: W 1/4 Set from county ties, Nothing set in paving. SW set from county ties, Nothing set in paving

Section 16-94-11  
 As referred to in  
 Engr. Tric Book

**PLAN - VIEW**

(Show a minimum of three reference ties to durable physical objects, relevant monuments and physical conditions that will enable recovery of the corner.)



I hereby certify that the survey work was completed and this certificate was prepared by me or under my direct personal supervision and that I am a duly registered land surveyor under the laws of the state of Iowa.

Signature: L.P. Erdman  
 Name typed or printed: L.P. ERDMAN

Date: 4-10-92 Reg. No. 2886

SEAL



Corners	List Corners to be Indexed Section	Twp	Range
W 1/4	15	94	11
SW	15	94	11

Placed in Tric Book 5/92