

PREPARED BY / RETURN TO: KENNETH D. STARK IOWA DEPARTMENT OF TRANSPORTATION 1420 4th ST. SE MASON CITY, IA 50401 641-423-7584

UNITED STATES PUBLIC LAND SURVEY CORNER CERTIFICATE

OF

9

Land Survey Monuments situated in Section 15, Township 94N, Range 11W
 of the Fifth Principal Meridian, CHICKASAW County, Iowa.

Previously recorded in BOOK 161, PAGE 231 in County Recorder's Office.
(book, page, document number, etc.)

(Show reason for preparing this certificate, the evidence and detailed procedures used in establishing the corner positions and monumentation found or placed.)

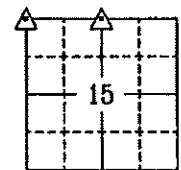
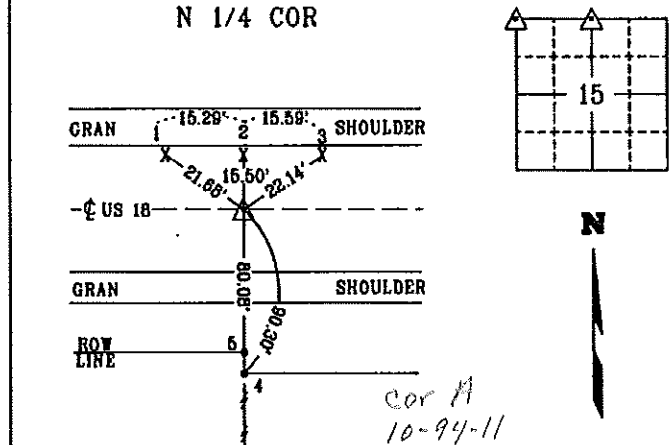
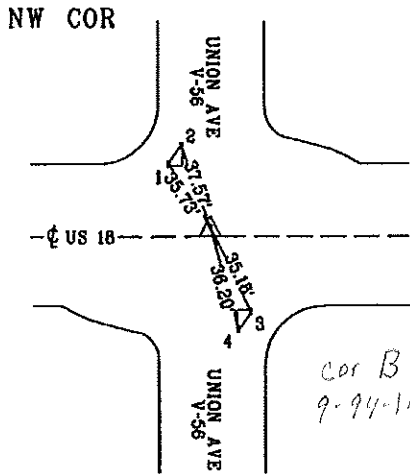
Monument Description and Remarks: NW COR - REPLACED PREVIOUSLY FOUND 2 1/2" IDOT ALUMINUM DISC MONUMENT IN ACC WITH A 1" BRASS DISC MONUMENT "IDOT SEC COR" IN PCC PAVEMENT 1.19' NORTH OF C AFTER PCC OVERLAY PROJECT NHSX-018-7(58)--3H-19 PER PREVIOUS CERT BOOK 161, PAGE 231. REASON FOR CERT: CHANGE TO MONUMENT.

N 1/4 COR - REPLACED PREVIOUSLY FOUND P-K NAIL IN ACC PAVEMENT WITH A 1" BRASS DISC MONUMENT "IDOT SEC COR" IN PCC PAVEMENT ON C AFTER PCC OVERLAY PROJECT NHSX-018-7(58)--3H-19 PER IDOT AS BUILT PLAN FR-18-7(17)--2G-19.

REASON FOR CERT: CHANGE TO MONUMENT AND NO CERT OF RECORD.

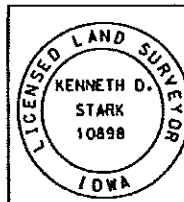
PLAN - VIEW

(Show a minimum of three reference ties to durable physical objects, relevant monuments and physical conditions that will enable recovery of the corner.)



- △ - 1" BRASS DISC MONUMENT "IDOT SEC COR"
- 1 - CUT "X" ON PCC ISLAND CURB NOSE
 - 2 - CUT "X" ON PCC ISLAND CURB NOSE
 - 3 - CUT "X" ON PCC ISLAND CAP
 - 4 - CUT "X" ON PCC ISLAND CAP

- △ - 1" BRASS DISC MONUMENT "IDOT SEC COR"
- 1 - SET MAG NAIL IN CUT "X" IN PCC SHOULDER
 - 2 - SET MAG NAIL IN CUT "X" IN PCC SHOULDER
 - 3 - SET MAG NAIL IN CUT "X" IN PCC SHOULDER
 - 4 - 5/8" REBAR/1 1/2" PUNCHED ALUM IDOT ROW CAP
 - 5 - 5/8" REBAR/1 1/2" PUNCHED ALUM IDOT ROW CAP



I hereby certify that this land surveying document was prepared and the related survey work was performed by me or under my personal supervision and that I am a duly licensed Land Surveyor under the laws of the state of Iowa.
Kenneth D. Stark 07-02-13
 Kenneth D. Stark Date
 License number 10898
 My license renewal date is December 31, 2013
 Pages or sheets covered by this set: 1

List Corners to be Indexed

Corner	Section	Township	Range
NW CORNER	15	94N	11W
N 1/4 CORNER	15	94N	11W

TIED: DM DRAWN: ME

Section 9-94-11
As referred to in
Engg. The Book

DOCUMENT No. 00048 FILED FOR RECORD THE 5th DAY OF July 1996 AT 8:35 P.M. STATE OF IOWA, CHICKASAW COUNTY.
RECORDING FEE \$ 6.00 O'CLOCK A.M. BOOK 161 DEED PAGE 231 By Lindsay Erdman Recorder
LEITHA H. ROSS Deputy

Prepared by: Erdman Engineering P.C. 708 Commerce Drive, P.O. Box 246, Decorah Iowa, 52101
Phone (319)382-4194, Fax (319)382-3623

United States Public Land Survey Corner Certificate

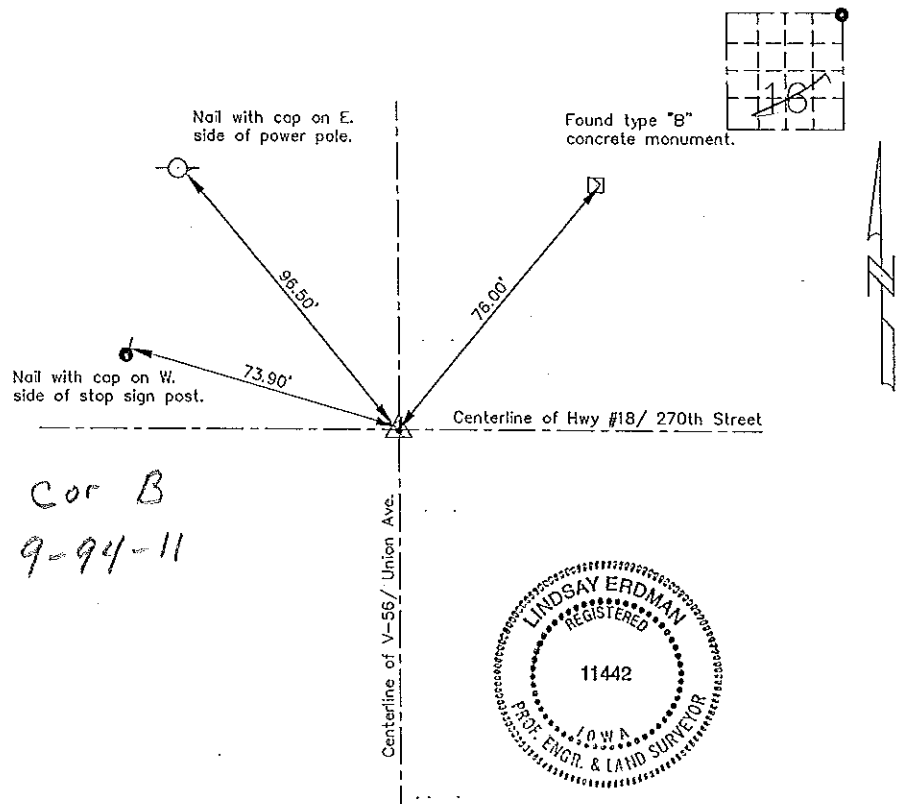
9 of

Land Survey Monuments situated in Section 16 Township 94 Range 11 of the Fifth Principle Meridian, Chickasaw County, Iowa. Previously recorded in does not apply In County Recorders Office.

(Show reason for preparing this certificate, the evidence and detailed procedures used in establishing the corner positions and monumentation found or placed.)

Monument Description and Remarks: This certificate is prepared in accordance with Section 355.11 of the 1995 Code of Iowa. No previous certificate has been filed for this corner location. Based on County Engineer's Reference ties we found one type "B" concrete monument. From this monument we found an IDOT "standard aluminum core monument" at the NE corner of Sec. 16-94-11

Plan-View
(Show a minimum of three reference ties to durable physical objects, relevant monuments and physical conditions that will enable recovery of the corner.)



Cor B
9-94-11



I hereby certify that the survey work was completed and this certificate was prepared by me or under by direct supervision and that I am a duly registered land surveyor under the laws of the State of Iowa.

Signature: Lindsay Erdman
Lindsay Erdman, P.E. and L.S.

Date: 7/2/96 Reg. No. 11442

My license will be renewed January 1, 1997

Corners	List Corners to be Indexed		
	Section	Twp.	Range
NE	16	94	11