

2005-2538
11/21/2005

TeKIPPE ENGINEERING, P.C., 128 South Vine Street, West Union, Iowa 52175 Phone (563) 422-6131

UNITED STATES PUBLIC LAND SURVEY CORNER CERTIFICATE

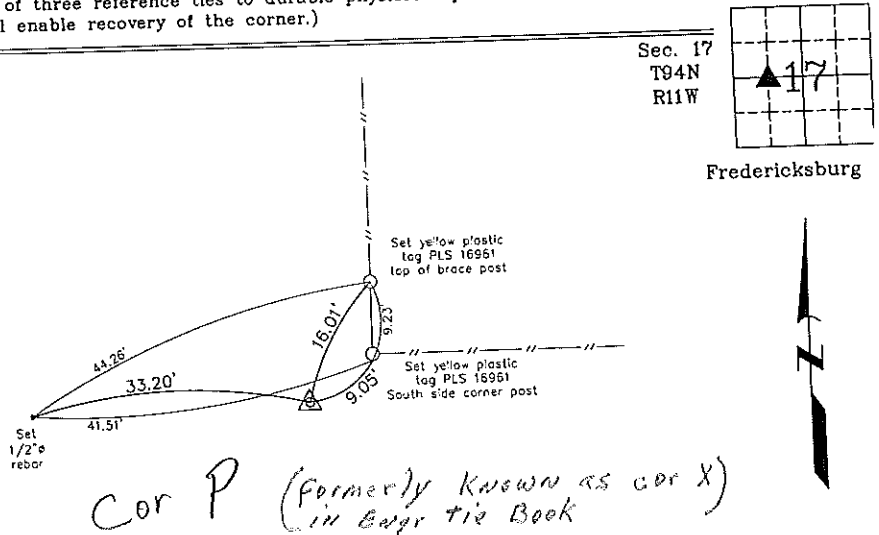
OF
Land Survey Monuments situated in Section 17, Township 94 North, Range
11 West of the Fifth Principal Meridian, CHICKASAW County, Iowa.
Previously recorded in none in County Recorder's Office.
(book, page, document number, etc.)

(Show reason for preparing this certificate, the evidence and detailed procedures used in establishing the corner positions and monumentation found or placed.)

Monument Description and Remarks: SW CORNER SE 1/4 - NW 1/4 SECTION 17 T94N R11W: Set 1/2"Ø rebar w/2"Ø aluminum cap PLS 16961 equidistant and on line between the W 1/4 Corner and the calculated Center of the Section.

PLAN - VIEW

(Show a minimum of three reference ties to durable physical objects, relevant monuments and physical conditions that will enable recovery of the corner.)



Cor P (formerly known as cor X)
in Engg tie Book

SW Corner SE 1/4 - NW 1/4 Section 17 T94N R11W
Set 1/2"Ø rebar w/2"Ø aluminum cap PLS 16961



I hereby certify that this land surveying document was prepared and the related survey work was performed by me or under my direct personal supervision and that I am a duly licensed Land Surveyor under the laws of the State of Iowa.

Michael J. Shimak November 18, 2005
Michael J. Shimak Date
License number 16961
My license renewal date is December 31, 2005.
Sheets covered by this seal: Individual

Corners	List Corners to be Indexed		
	Section	Twp.	Range
SW-SE-NW	17	94N	11W

Project Number 05234.1S
FB, Fredericksburg #1 PG. 13-15
X:\Section Corners\Sec. 17\17-94-11.dwg

COUNTY ENGINEER
COPY