

2005-2539
11-21-2005

TeKIPPE ENGINEERING, P.C., 128 South Vine Street, West Union, Iowa 52175 Phone (563) 422-5131

UNITED STATES PUBLIC LAND SURVEY CORNER CERTIFICATE

OF

Land Survey Monuments situated in Section 17, Township 94 North, Range 11 West of the Fifth Principal Meridian, CHICKASAW County, Iowa.

Previously recorded in none in County Recorder's Office.
(book, page, document number, etc.)

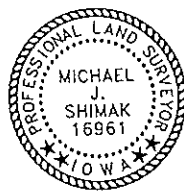
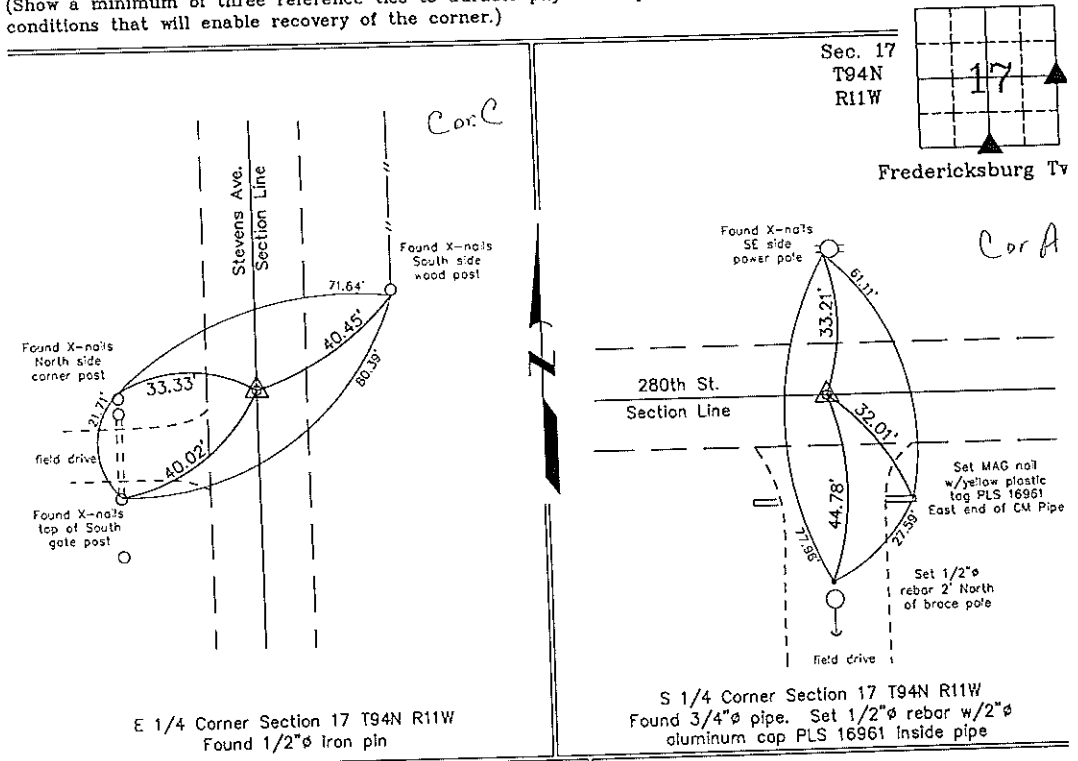
(Show reason for preparing this certificate, the evidence and detailed procedures used in establishing the corner positions and monumentation found or placed.)

Monument Description and Remarks: E 1/4 CORNER SECTION 17 T94N R11W: Found 5/8"Ø iron pin with information obtained from the Chickasaw County Engineer's Office in Field Book Fredericksburg Twp. Corner Ties, Corner 'C'.

S 1/4 CORNER SECTION 17 T94N R11W: Found 3/4"Ø pipe with information obtained from the Chickasaw County Engineer's Office in Field Book Fredericksburg Twp. Corner Ties, Corner 'A'. Set 1/2"Ø rebar w/2"Ø aluminum cap PLS 16961 inside pipe.

PLAN - VIEW

(Show a minimum of three reference ties to durable physical objects, relevant monuments and physical conditions that will enable recovery of the corner.)



I hereby certify that this land surveying document was prepared by me or under my direct personal supervision and that I am a duly licensed Land Surveyor under the laws of the State of Iowa.
Michael J. Shimak November 19, 2005
Michael J. Shimak Date
License number 16961
My license renewal date is December 31, 2005.
Sheets covered by this seal: Individual

List Corners to be Indexed			
Corners	Section	Twp.	Range
E 1/4	17	94N	11W
S 1/4	17	94N	11W

Project Number 05243.1S
FB Fredericksburg #1 PG. 13-15
X:\Section Corners\Sec. 17\17-94-11ow.dwg