

PREPARED BY / RETURN TO: KENNETH D. STARK IOWA DEPARTMENT OF TRANSPORTATION 1420 4th ST. SE WASON CITY, IA 50401 641-423-7584

UNITED STATES PUBLIC LAND SURVEY CORNER CERTIFICATE

OF

Land Survey Monuments situated in Section 17, Township 94N, Range 11W
 of the Fifth Principal Meridian, CHICKASAW County, Iowa.

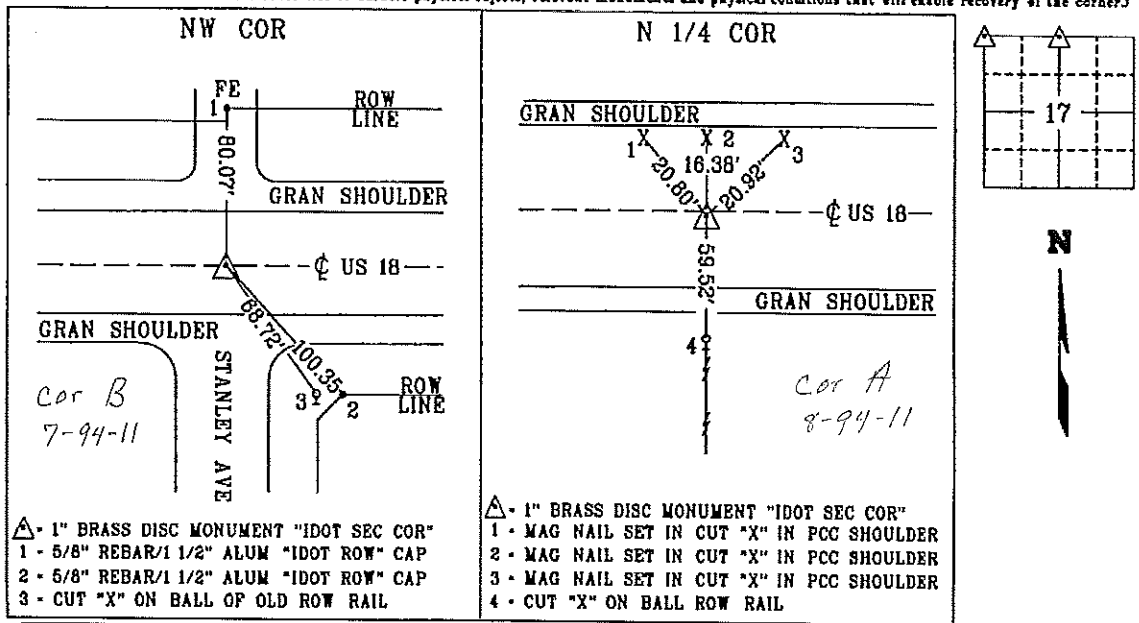
Previously recorded in *2001-2823 & BOOK 172, PAGE 295 in County Recorder's Office.
(book, page, document number, etc.)

(Show reason for preparing this certificate, the evidence and detailed procedures used in establishing the corner positions and monumentation found or placed.)

Monument Description and Remarks:
NW COR - REPLACED PREVIOUSLY FOUND 1/2" REBAR & 2" ALUMINUM CAP *15525 IN CORE HOLE WITH A 1" BRASS DISC MONUMENT "IDOT SEC COR" AFTER PCC OVERLAY PROJECT NHSX-018-7(58)--3H-19 PER PREVIOUS CERT *2002-2823. REASON FOR CERT: CHANGE TO MONUMENT.
N 1/4 COR- REPLACED PREVIOUSLY FOUND 2 1/2" IDOT ALUMINUM DISC MONUMENT IN ACC WITH A 1" BRASS DISC MONUMENT "IDOT SEC COR" 0.76' SOUTH OF C IN PCC PAVEMENT AFTER PCC OVERLAY PROJECT NHSX-018-7(58)--3H-19 PER PREVIOUS CERT BOOK 172, PAGE 295.
REASON FOR CERT: CHANGE TO MONUMENT.

PLAN - VIEW

(Show a minimum of three reference ties to durable physical objects, relevant monuments and physical conditions that will enable recovery of the corner.)



LICENSED LAND SURVEYOR
 KENNETH D. STARK
 10898
 IOWA

I hereby certify that this land surveying document was prepared and the related survey work was performed by me or under my personal supervision and that I am a duly licensed Land Surveyor under the laws of the state of Iowa.
Kenneth D. Stark 07-02-13
 Kenneth D. Stark Date
 License number 10898
 My License renewal date is December 31, 2013
 Pages or sheets covered by this seal. 1

List Corners to be Indexed

Corner	Section	Township	Range
NW CORNER	17	94N	11W
N 1/4 CORNER	17	94N	11W

TIED: DM DRAWING

DOCUMENT No. 03192 FILED FOR RECORD THE 21st DAY OF JULY STATE OF IOWA, CHECKASAW COUNTY:
 RECORDING FEE \$ 6.00 19 99 AT 9:26 Recorder Cindy Messersmith
 TRANSFER FEE - \$ _____ O'CLOCK A M. BOOK 172 PAGE 295 By Shirley M. Kroger Deputy

Prepared by: Erdman Engineering, P.C. 708 Commerce Drive, P.O. Box 246, Decorah, Iowa 52101
 Phone (319)382-4194, Fax (319)382-3623

**United States Public Land Survey Corner Certificate
 of**

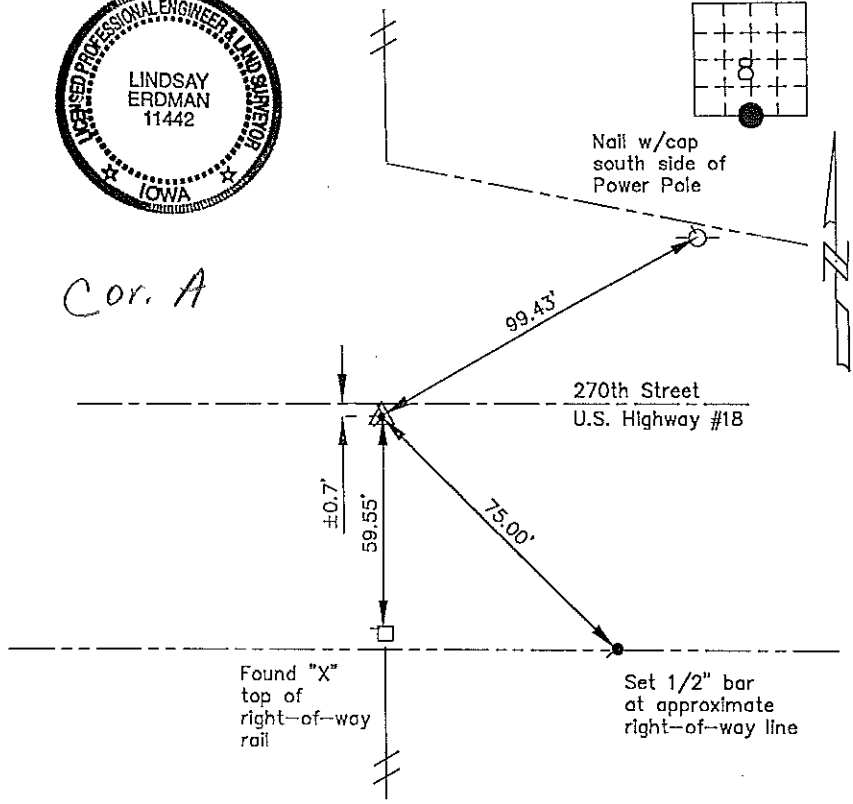
Land Survey Monuments situated in Section 8 Township 94 Range 11 of the Fifth Principle Meridian,
 Chickasaw County, Iowa. Previously recorded in Book 147 page 118 In County Recorders Office.

Monument Description and Remarks: This certificate is prepared in accordance with Section 355.11 of the 1995 Code of Iowa. A previous certificate has been filed for this corner location. Based on this previous certificate and Chickasaw County Engineer's Reference Ties we found a right-of-way Rail with an "X" cut on the top that is being used as a tie marker. Based on this tie we found an Iowa Department of Transportation Standard Monument at the S 1/4 Corner of Section 8, Township 94 North, Range 11 West. The monument is ± 0.7' south of the centerline joint and down ± 2" below the ACC pavement surface.

Plan-View



Cor. A



I hereby certify that the survey work was completed and this certificate was prepared by me or under my direct supervision and that I am a duly registered land surveyor under the laws of the State of Iowa.

Signature: Lindsay Erdman
 Lindsay Erdman, P.E. and L.S.

Date: 7/19/99 Reg. No. 11442

My license renewal date is December 31, 2000

List Corners to be Indexed			
Corners	Section	Twp.	Range
S 1/4	8	94	11

UNITED STATES PUBLIC LAND SURVEY CORNER CERTIFICATE

SECTION 17⁸, TOWNSHIP 94, RANGE 11 OF THE 5TH. P.M.
 IN CHICKASAW COUNTY, IOWA

CORNER: NE COR NW1/4, AKA N1/4

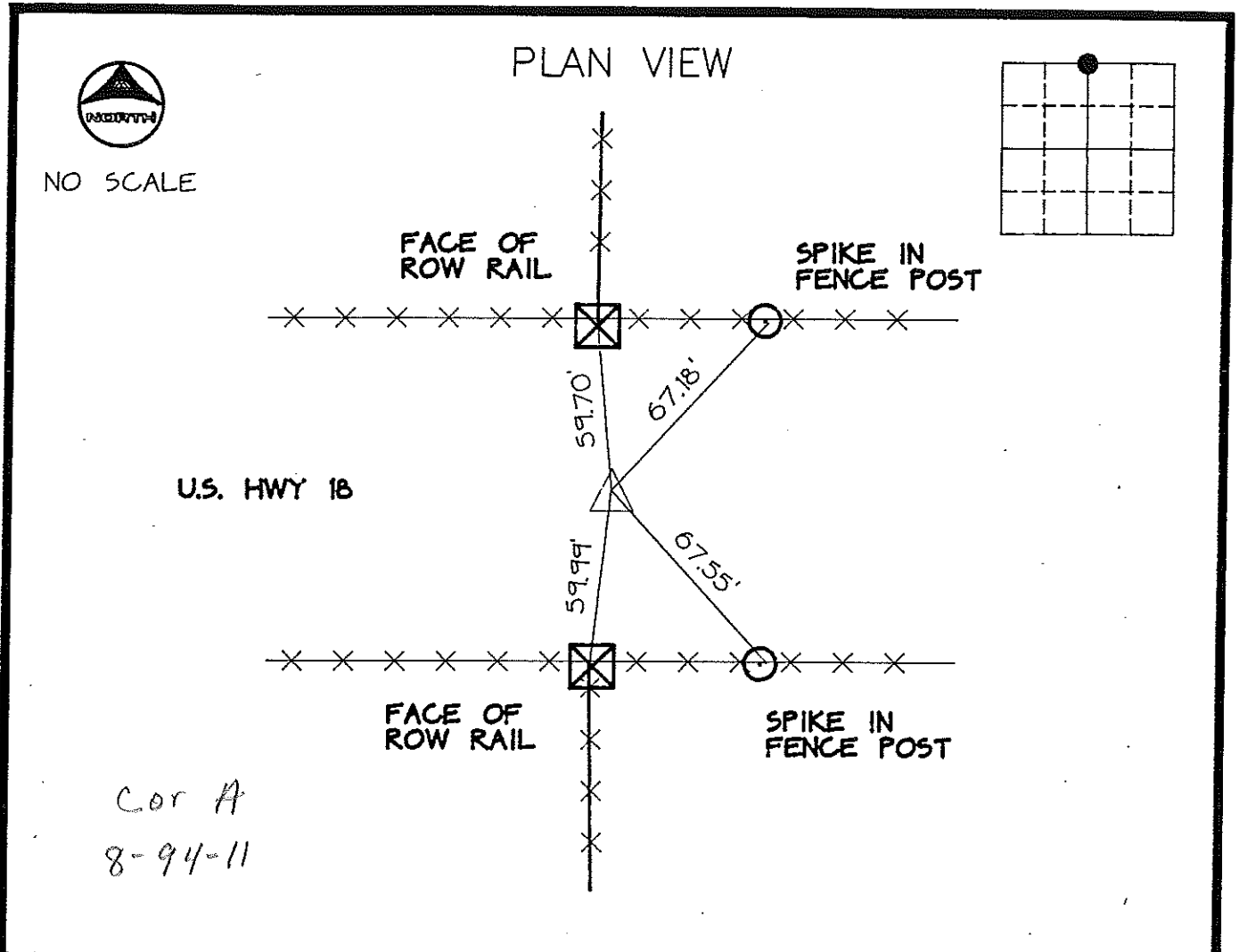
DESCRIPTION AND REMARKS:

*Section 8-94-11
 As referred to in
 Engr. Tie Book*

FOUND ASPHALT NAIL

*Placed in Tie Book
 4/91
 JFH*

PREVIOUSLY RECORDED IN BOOK _____, PAGE _____



*Cor A
 8-94-11*

CERTIFICATION:
 I HEREBY CERTIFY THAT THIS MAP, PLAT, OR SURVEY WAS MADE BY
 ME OR UNDER MY DIRECT PERSONAL SUPERVISION AND THAT I AM A
 DULY REGISTERED LAND SURVEYOR UNDER THE LAWS OF THE STATE
 OF IOWA.

Thomas V. Craft
 THOMAS V. CRAFT REG. L.S. NO. 7349

DATE: *4/17/91*



INDEXING ALTERNATIVES

CORNER	SECTION	TWP	RANGE
--------	---------	-----	-------

SW/4	8	94	11
------	---	----	----