

PREPARED BY / RETURN TO: KENNETH D. STARK IOWA DEPARTMENT OF TRANSPORTATION 1420 4th ST. SE MASON CITY, IA 50401 641-423-7584

UNITED STATES PUBLIC LAND SURVEY CORNER CERTIFICATE

OF

Land Survey Monuments situated in Section 16, Township 94N, Range 11W
 of the Fifth Principal Meridian, CHICKASAW County, Iowa.

Previously recorded in BOOK 172, PAGE 296 in County Recorder's Office.
(book, page, document number, etc.)

(Show reason for preparing this certificate, the evidence and detailed procedures used in establishing the corner positions and monumentation found or placed.)

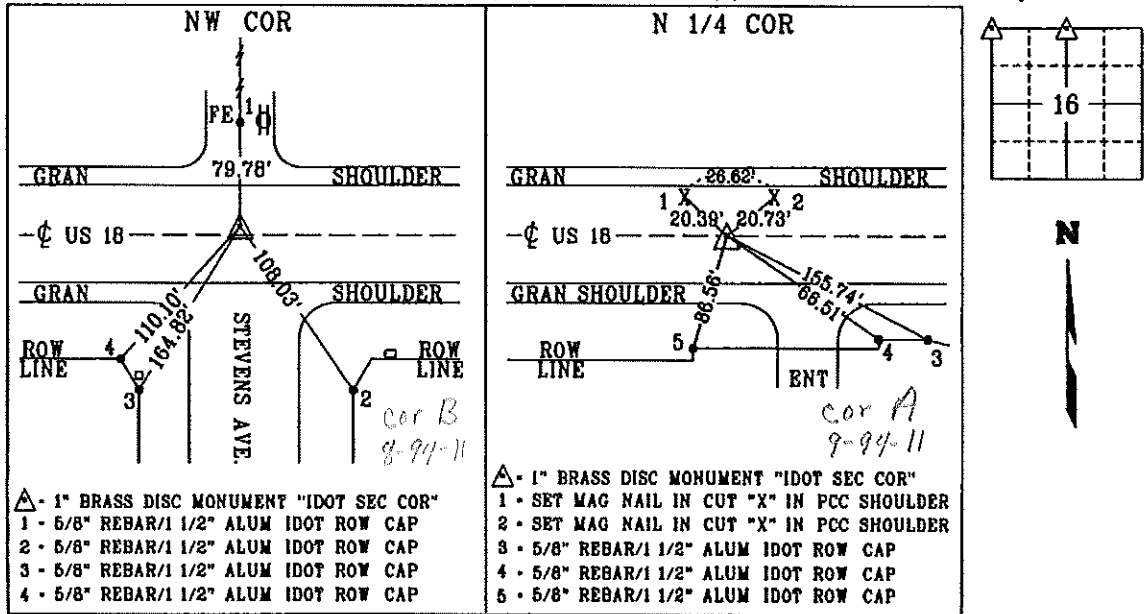
Monument Description and Remarks: NW COR - REPLACED PREVIOUSLY FOUND 2 1/2" IDOT ALUMINUM DISC MONUMENT IN ACC WITH A 1" BRASS DISC MONUMENT "IDOT SEC COR" IN PCC PAVEMENT 0.28' NORTH OF C AFTER PCC OVERLAY PROJECT NHSX-018-7(58)--3H-19 PER PREVIOUS CERT BOOK 172, PAGE 296. REASON FOR CERT: CHANGE TO MONUMENT.

N 1/4 COR - REPLACED PREVIOUSLY FOUND 2 1/2" IDOT ALUMINUM DISC MONUMENT IN ACC WITH A 1" BRASS DISC MONUMENT "IDOT SEC COR" IN PCC PAVEMENT AFTER OVERLAY PROJECT NHSX-018-7(58)--3H-19 PER AS BUILT PLAN FR-18-7(17)--2G-19.

REASON FOR CERT: CHANGE TO MONUMENT AND NO CERT OF RECORD.

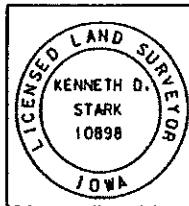
PLAN - VIEW

(Show a minimum of three reference ties to durable physical objects, relevant monuments and physical conditions that will enable recovery of the corner.)



- ▲ - 1" BRASS DISC MONUMENT "IDOT SEC COR"
- 1 - 5/8" REBAR/1 1/2" ALUM IDOT ROW CAP
 - 2 - 5/8" REBAR/1 1/2" ALUM IDOT ROW CAP
 - 3 - 5/8" REBAR/1 1/2" ALUM IDOT ROW CAP
 - 4 - 5/8" REBAR/1 1/2" ALUM IDOT ROW CAP

- ▲ - 1" BRASS DISC MONUMENT "IDOT SEC COR"
- 1 - SET MAG NAIL IN CUT "X" IN PCC SHOULDER
 - 2 - SET MAG NAIL IN CUT "X" IN PCC SHOULDER
 - 3 - 5/8" REBAR/1 1/2" ALUM IDOT ROW CAP
 - 4 - 5/8" REBAR/1 1/2" ALUM IDOT ROW CAP
 - 5 - 5/8" REBAR/1 1/2" ALUM IDOT ROW CAP



I hereby certify that this land surveying document was prepared and the related survey work was performed by me or under my personal supervision and that I am a duly licensed Land Surveyor under the laws of the state of Iowa.
Kenneth D. Stark 07-02-13
 Kenneth D. Stark Date
 License number 10898
 My License renewal date is December 31, 2013
 Pages or sheets covered by this seal: 1

List Corners to be Indexed

Corner	Section	Township	Range
NW CORNER	16	94N	11W
N 1/4 CORNER	16	94N	11W

DOCUMENT No. 03193 FILED FOR RECORD THE 21st DAY OF July 19 99 AT 9:28 STATE OF IOWA, CHICKASAW COUNTY:
 RECORDING FEE \$ 6.00 BY Cindy Messersmith Recorder
 TRANSFER FEE \$ _____ O'CLOCK A M. BOOK 172 PAGE 296 By Shirley M. Proyna Deputy

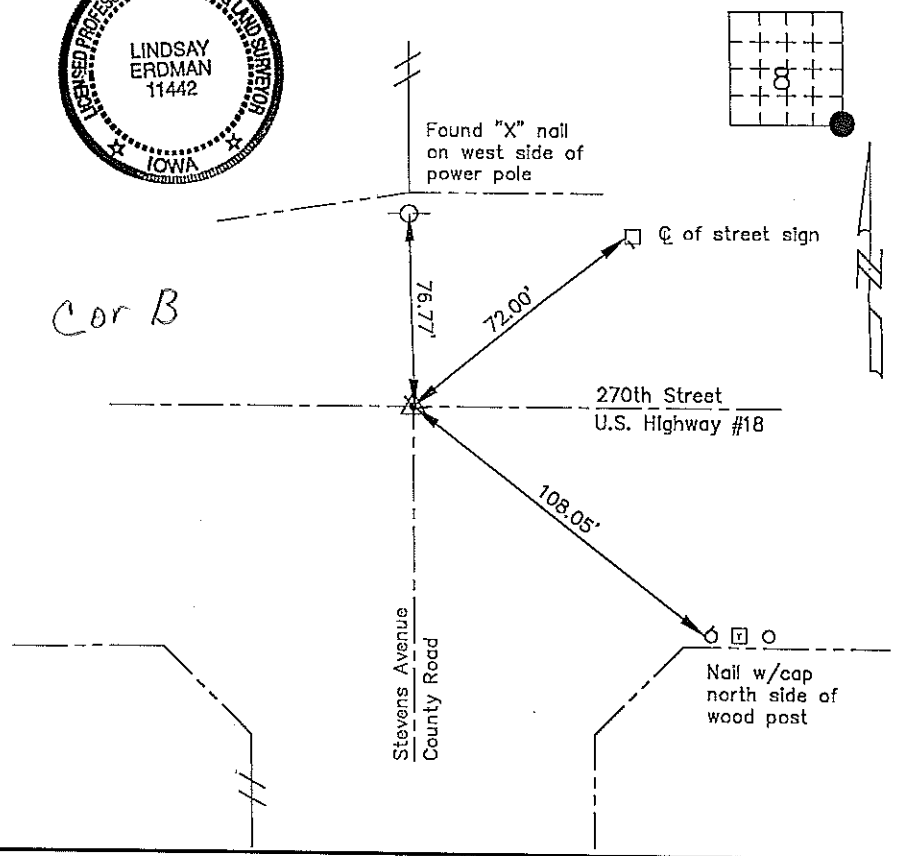
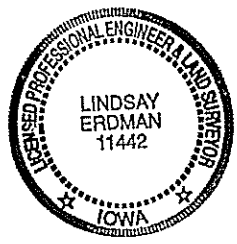
Prepared by: Erdman Engineering, P.C. 708 Commerce Drive, P.O. Box 246, Decorah, Iowa 52101
 Phone (319)382-4194, Fax (319)382-3623

United States Public Land Survey Corner Certificate
 of

Land Survey Monuments situated in Section 8 Township 94 Range 11 of the Fifth Principle Meridian,
 Chickasaw County, Iowa. Previously recorded in does not apply in County Recorders Office.

Monument Description and Remarks: This certificate is prepared in accordance with Section 355.11 of the 1995 Code of Iowa. No previous certificate has been filed for this corner location. Based on Chickasaw County Engineer's Reference Ties we found a power pole with "X" nails on the west side that are being used as a tie marker. From this tie we found a Iowa Department of Transportation Standard Monument at the SE Corner of Section 8, Township 94 North, Range 11 West. The monument is at the approximate centerline centerline intersection of the roads and down ±2" below the ACC pavement surface.

Plan-View



I hereby certify that the survey work was completed and this certificate was prepared by me or under my direct supervision and that I am a duly registered land surveyor under the laws of the State of Iowa.

Signature: Lindsay Erdman
 Lindsay Erdman, P.E. and L.S.
 Date: 7/19/99 Reg. No. 11442

My license renewal date is December 31, 2000.

Corner	Section	Twp.	Range
SE	8	94	11

m:\c:\vegaf\sect\chick\690501\690501.s