

**UNITED STATES PUBLIC LAND SURVEY CORNER CERTIFICATE**

OF

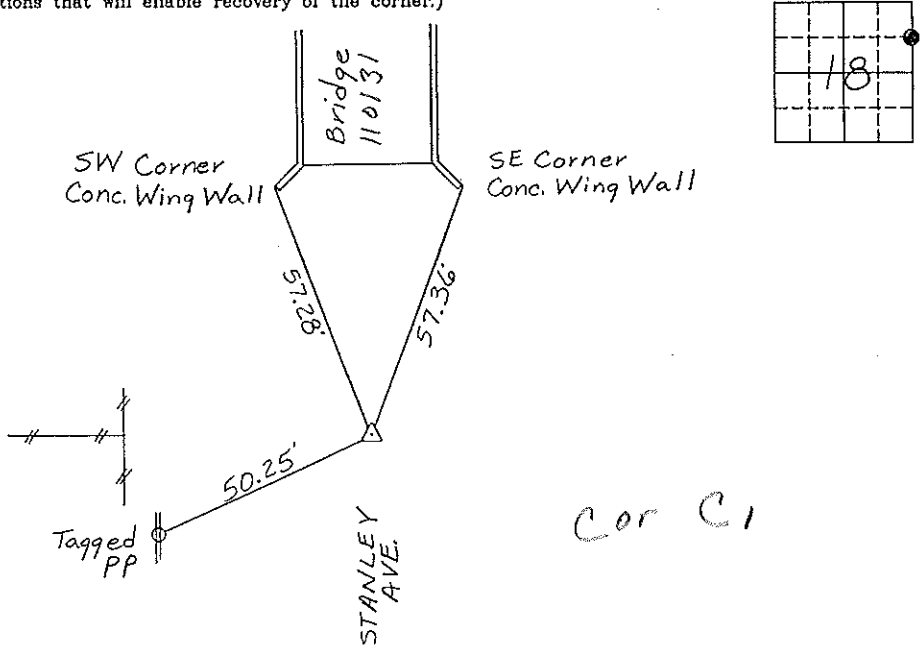
Land Survey Monuments situated in Section 18, Township 94 North, Range 11 West, of the Fifth Principal Meridian, CHICKASAW County, Iowa  
 Previously recorded in NONE in County Recorder's Office  
(book page, document number, etc.)

(Show reason for preparing this certificate, the evidence and detailed procedures used in establishing the corner positions and monumentation found or placed.)

Monument Description and Remarks: SE CORNER, NE 1/4 - NE 1/4, SECTION 18 - T94N - R11W  
Set 1/2" ϕ Rebar with cap midway on Line between E 1/4 Corner & NE Corner of Section.

**PLAN - VIEW**

(Show a minimum of three reference ties to durable physical objects, relevant monuments and physical conditions that will enable recovery of the corner.)



I hereby certify that the survey work was completed and this certificate was prepared by me or under my direct personal supervision and that I am a duly registered land surveyor under the laws of the state of Iowa.

Signature: Gary L. Casady  
 Gary L. Casady

Date: 10-27-94 Reg. No. 12532  
 My Registration Renewal Date is December 31, 1994

Seal



List Corners to be Indexed			
Corners	Section	Twp.	Range
SE Corner			
NE 1/4 - NE 1/4	18	94N	11W
Cor C-1	18	94-11	

*Placed in the book 11/94*

*"County Engineer's Copy"*