

XX  
 C  
 N  
 S  
 DOCUMENT No. 00856 FILED FOR RECORD THE 14th DAY OF October 1992 AT 8:33 STATE OF IOWA, CHICKASAW COUNTY.  
 RECORDING FEE \$ 5.00 O'CLOCK A.M. BOOK 150 DEEDS PAGE 322 Mary C. Murray Recorder  
Lyle G. TeKippe Deputy

UNITED STATES PUBLIC LAND SURVEY CORNER CERTIFICATE

OF

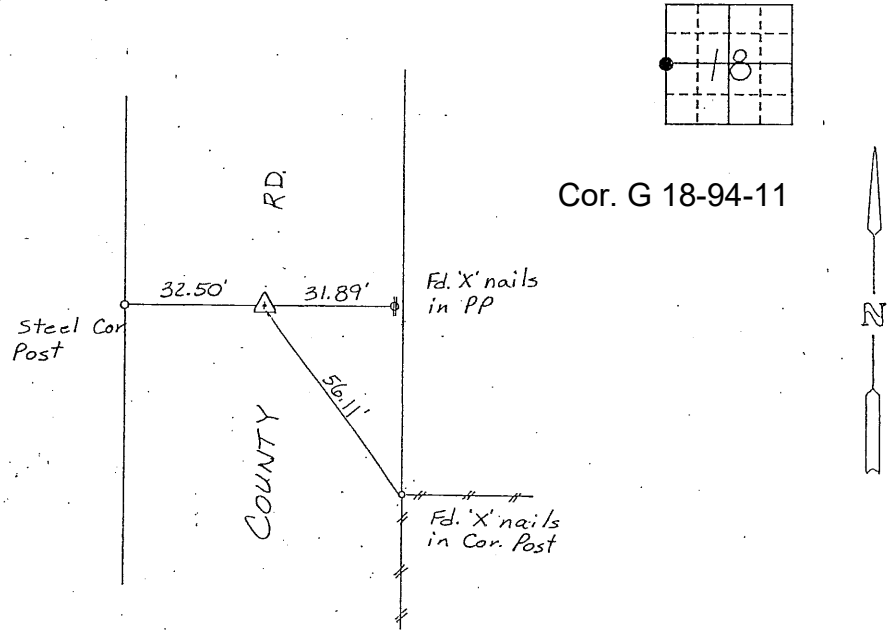
Land Survey Monuments situated in Section 18, Township 94N, Range 11W,  
 of the Fifth Principal Meridian, CHICKASAW County, Iowa.  
 Previously recorded in (NONE) in County Recorder's Office.

(Show reason for preparing this certificate, the evidence and detailed procedures used in establishing the corner positions and monumentation found or placed.)

Monument Description and Remarks: W 1/4 CORNER, SECTION 18-T94N-R11W:  
FOUND 1/2" SQ. IRON PIN.

PLAN - VIEW

(Show a minimum of three reference ties to durable physical objects, relevant monuments and physical conditions that will enable recovery of the corner.)



W 1/4 CORNER, SECTION 18-T94N-R11W

I hereby certify that the survey work was completed and this certificate was prepared by me or under my direct personal supervision and that I am a duly registered land surveyor under the laws of the state of Iowa.

Signature: Lyle G. TeKippe  
 Name typed or printed: Lyle G. TeKippe  
 Date: 9-23-92 Reg. No. 7060

Corners	List Corners to be Indexed		
	Section	Twp	Range
<u>W 1/4</u>	<u>18</u>	<u>94N</u>	<u>11W</u>

SEAL

