

TeKIPPE ENGINEERING, P.C., 128 South Vine Street, West Union, Iowa 52176 Phone (563) 422-5131

UNITED STATES PUBLIC LAND SURVEY CORNER CERTIFICATE

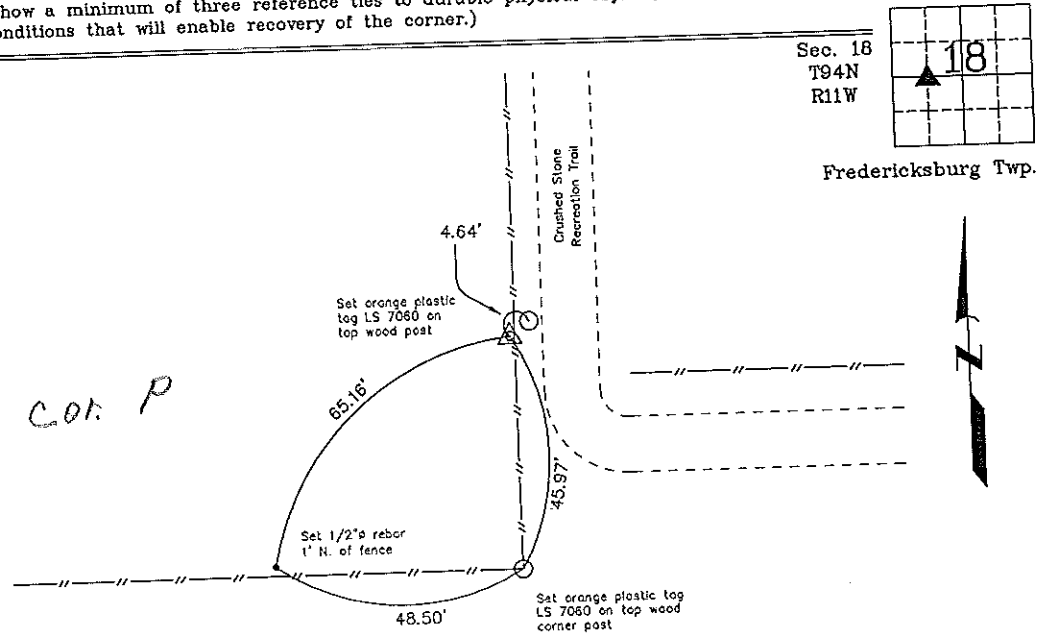
OF
 Land Survey Monuments situated in Section 18, Township 94 North, Range
11 West of the Fifth Principal Meridian, Chickasaw County, Iowa.
 Previously recorded in none in County Recorder's Office.
(book, page, document number, etc.)

(Show reason for preparing this certificate, the evidence and detailed procedures used in establishing the corner positions and monumentation found or placed.)

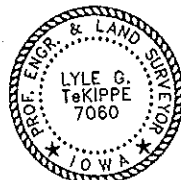
Monument Description and Remarks: SW Corner SE 1/4 - Fractional NW 1/4 Section 18 T94N R11W: Set 1/2"Ø rebar with 2"Ø aluminum cap LS 7060 on line between the Center and West 1/4 Corner at intersection of previously monumented 1/4-1/4 Section Line.

PLAN - VIEW

(Show a minimum of three reference ties to durable physical objects, relevant monuments and physical conditions that will enable recovery of the corner.)



SW Corner SE 1/4 - Fr'l NW 1/4 Section 18 T94N R11W
 Set 1/2"Ø rebar w/2"Ø aluminum cap LS 7060



I hereby certify that this land surveying document was prepared and the related survey work was performed by me or under my direct personal supervision and that I am a duly licensed Land Surveyor under the laws of the State of Iowa.

Lyle G. TeKippe 7-20-07
 Lyle G. TeKippe Date
 License number 7060
 My license renewal date is December 31, 2008.
 Sheets covered by this seal: Individual

Corners	List Corners to be Indexed		
	Section	Twp.	Range
SW-SE-NW	18	94N	11W

Project Number 06349.LS
 FB, Fredericksburg #1.
 PGS. 31-32
 X:\Section Corners\Sec. 18\18-94-11L.dwg