

2001 DEC 26 AM 9 14

CINDY MESSERSMITH
 COUNTY RECORDER

TeKIPPE ENGINEERING, P.C., 128 South Vine Street, West Union, Iowa 52176 Phone (563) 422-5131

UNITED STATES PUBLIC LAND SURVEY CORNER CERTIFICATE

OF
 Land Survey Monuments situated in Section 18, Township 94 North, Range
11 West of the Fifth Principal Meridian, CHICKASAW County, Iowa.
 Previously recorded in none in County Recorder's Office.
(book, page, document number, etc.)

(Show reason for preparing this certificate, the evidence and detailed procedures used in establishing the corner positions and monumentation found or placed.)

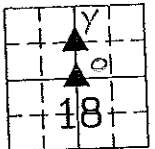
Monument Description and Remarks: SW Corner NW 1/4 - NE 1/4 Section 18 T94N R11W:
Set 1/2"Ø rebar w/2"Ø aluminum cap PLS 15525 equidistant and on line between the
N 1/4 Corner and the Center of the Section.

Center of Section 18 T94N R11W: Set 1/2"Ø rebar w/2"Ø aluminum cap PLS 15525 at
the intersection of the 1/4 Section Lines.

PLAN - VIEW

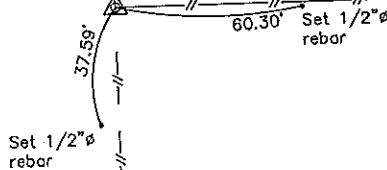
Project Number 01172.LS
 FB. 48 I PG. 41-43

(Show a minimum of three reference ties to durable physical objects, relevant monuments and physical conditions that will enable recovery of the corner.)



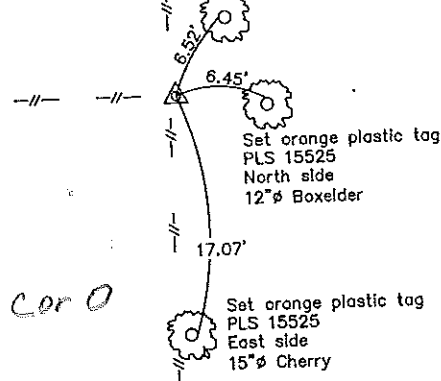
Fredericksburg Twp

Set 1/2"Ø rebar
 w/1 1/2"Ø aluminum cap
 TeKippe Eng.
 Control Point

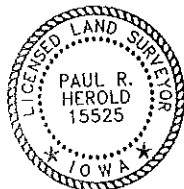


SW Corner NW 1/4 - NE 1/4 Section 18 T94N R11W
 Set 1/2"Ø rebar w/2"Ø aluminum cap PLS 15525

Set orange plastic
 tag PLS 15525
 West side
 6"Ø Boxelder



Center of Section 18 T94N R11W
 Set 1/2"Ø rebar w/2"Ø aluminum cap PLS 15525



I hereby certify that this land surveying document was prepared and the related survey work was performed by me or under my direct personal supervision and that I am a duly licensed Land Surveyor under the laws of the State of Iowa.

Paul R. Herold 12-21-01
 Paul R. Herold Date
 License number 15525
 My license renewal date is December 31, 2002.
 Sheets covered by this seal Individual

List Corners to be Indexed			
Corners	Section	Twp.	Range
SW-NW-NE	18	94N	11W
Center	18	94N	11W

Entered 1-10-02

County Engineer Copy