

Prepared by & Return to: Harold - Reicks Surveying, 10 East Main Street, New Hampton, IA 50659, Ph. 641-394-2725

UNITED STATES PUBLIC LAND SURVEY CORNER CERTIFICATE

18
 Land Survey Monuments situated in Section 17, Township 94 North, Range 11 West of the Fifth Principal Meridian, Chickasaw County, Iowa. Previously recorded in Bk. 156, Pg. 234 in the County Recorder's office.

This certificate is being prepared in compliance with Iowa Code Chapter 355.11 because:

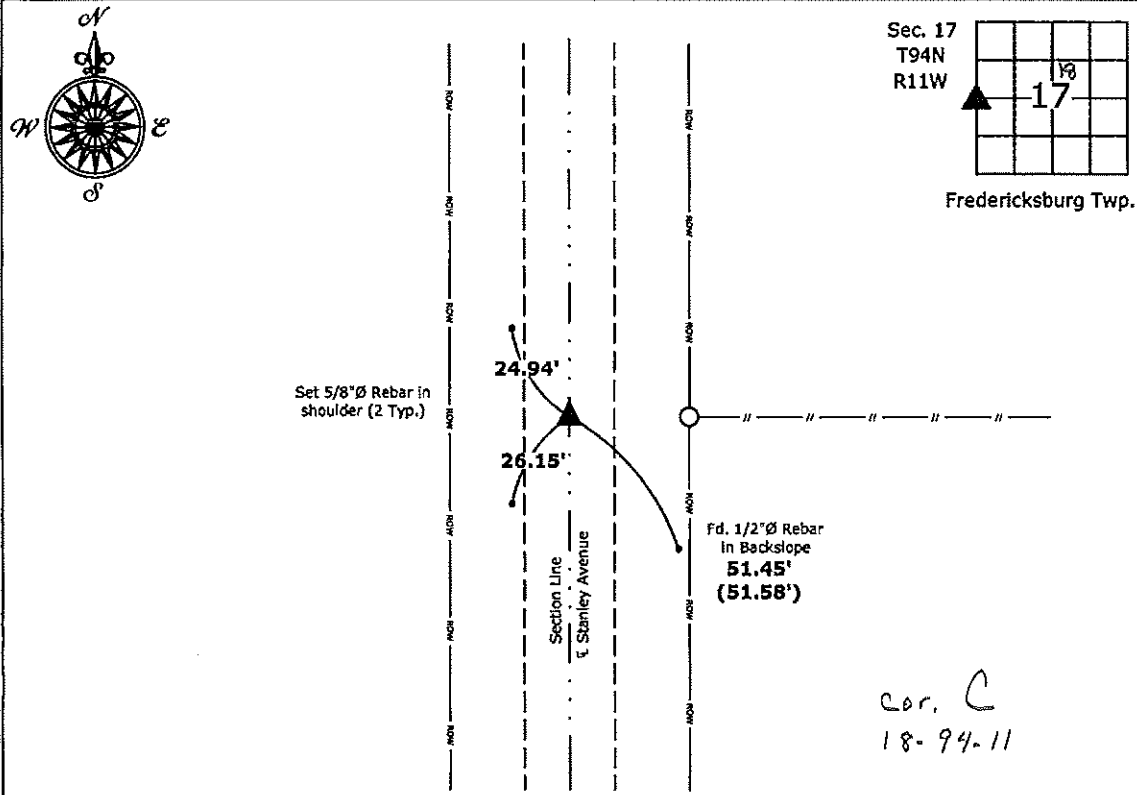
- There is no certificate on file for this corner.
- There are no longer three valid ties of record.
- There are changes to reference ties of record.
- There is change of monumentation of record.
- To clarify description of record monument (ties).

Monument Description and Remarks:

West 1/4 Corner: Found 50D Spike bent with information obtained from the previous Section Corner certificate. Replaced bent spike with a 5/8"Ø rebar with 2"Ø aluminum cap PLS 19211 to perpetuate the corner.

PLAN - VIEW

(Show a minimum of three reference ties to durable physical objects, relevant monuments and physical conditions that will enable recovery of the corner.)



West 1/4 Corner Section 12-94-12
 Fd. 50D Spike Bent
 Set 5/8"Ø rebar w/2"Ø aluminum cap PLS 19211



I hereby certify that this land surveying document was prepared and the related survey work was performed by me or under my direct personal supervision and that I am a duly licensed Land Surveyor under the laws of the State of Iowa.

Kirk D. Reicks 10-8-13
 Kirk D. Reicks Date:
 License number 19211
 My license renewal date is December 31, 2014.
 Sheets covered by this seal: Individual sheet only

List Corners to be Indexed			
Corners	Section	Twp.	Range
W 1/4	17	94	11

Project Number: 2013-132
 FB: Fredericksburg 1, Pg. 6

UNITED STATES PUBLIC LAND SURVEY CORNER CERTIFICATE

OF

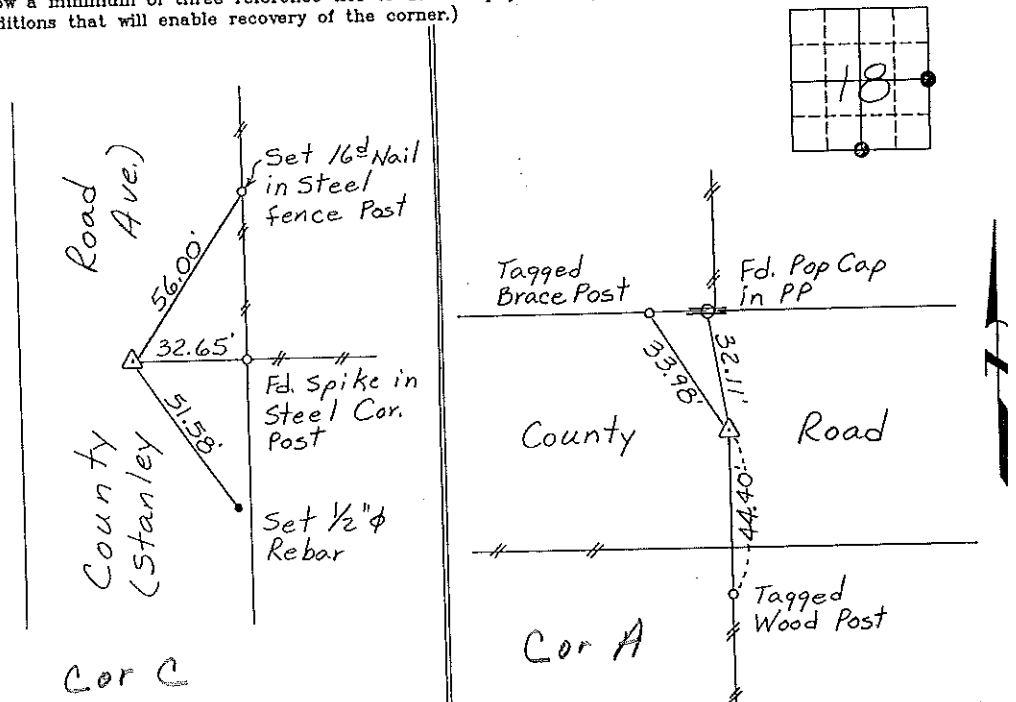
Land Survey Monuments situated in Section 18, Township 94 North, Range 11 West, of the Fifth Principal Meridian, CHICKASAW County, Iowa.
 Previously recorded in NONE in County Recorder's Office.
(book, page, document number, etc.)

(Show reason for preparing this certificate, the evidence and detailed procedures used in establishing the corner positions and monumentation found or placed.)

Monument Description and Remarks: E 1/4 CORNER, SECTION 18-T94N-R11W:
Found 50^d Spike.
S 1/4 CORNER, SECTION 18-T94N-R11W: Found 3/4" Square Iron
Pin.

PLAN - VIEW

(Show a minimum of three reference ties to durable physical objects, relevant monuments and physical conditions that will enable recovery of the corner.)



E 1/4 CORNER, SECTION 18-T94N-R11W

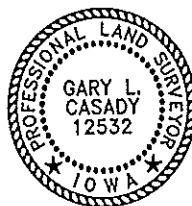
S 1/4 CORNER, SECTION 18-T94N-R11W

I hereby certify that the survey work was completed and this certificate was prepared by me or under my direct personal supervision and that I am a duly registered land surveyor under the laws of the state of Iowa.

Signature: Gary L. Casady
 Gary L. Casady

Date: 10-27-94 Reg. No. 12532
 My Registration Renewal Date is December 31, 1994

Seal



List Corners to be Indexed			
Corners	Section	Twp.	Range
E 1/4	18	94N	11W
<small>Cor C-18-94-11</small>			
S 1/4	18	94N	11W
<small>Cor A-18-94-11</small>			

Placed in tie book 11/94

"County Engineer's Copy"