

Chickasaw Co. Recorder
 Cindy Messersmith
Fee Book 2016-0078
 01/18/2016 @0944AM
 SCC SEC COR CERT # Pages: 1
 Book: Page: \$7.00
 Total Fees:

PREPARED BY / RETURN TO: KENNETH D. STARK IOWA DEPARTMENT OF TRANSPORTATION 428 43rd ST. SW MASON CITY, IA 50401 841-423-7584

UNITED STATES PUBLIC LAND SURVEY CORNER CERTIFICATE
 OF

Land Survey Monuments situated in Section 18, Township 94N, Range 11W
 of the Fifth Principal Meridian, CHICKASAW County, Iowa.

Previously recorded in Doc. No. 00855 - Book 149, Page 463 in County Recorder's Office.
(book, page, document number, etc.)

(Show reason for preparing this certificate, the evidence and detailed procedures used in establishing the corner positions and monumentation found or placed.)

Monument Description and Remarks: NW CORNER: Replaced previously found IDOT Alum Disc with a Survey Mark Nail/IDOT Sec. Cor. washer, on \oslash US 18 per previous cert of record Doc. No. 00855 after HMA resurfacing project NHSX-018-7(62)--3H-19.

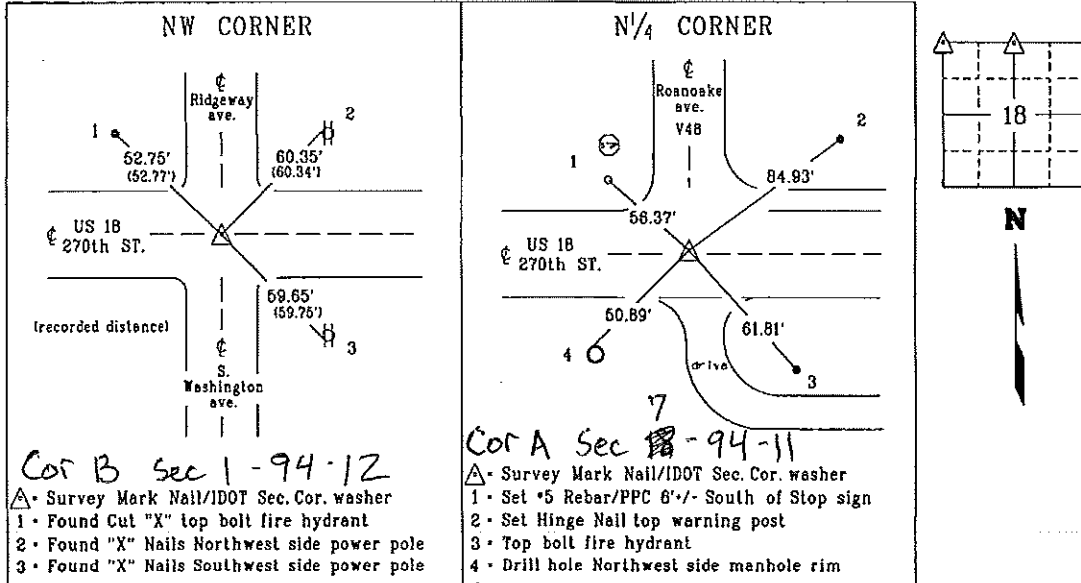
Reason for cert: Monumentation and ties have changed.

N¹/₄ CORNER: Replaced previously found IDOT Alum Disc with a Survey Mark Nail/IDOT Sec. Cor. washer, 0.6' +/- North \oslash US 18 per previous cert of record Book 149, Page 463 after HMA resurfacing project NHSX-018-7(62)--3H--19.

Reason for cert: Monumentation and ties have changed.

PLAN - VIEW

(Show a minimum of three reference ties to durable physical objects, relevant monuments and physical conditions that will enable recovery of the corner.)



I hereby certify that this land surveying document was prepared and the related survey work was performed by me or under my personal supervision and that I am duly licensed Land Surveyor under the laws of the state of Iowa.

Kenneth D. Stark 01-15-16
 Kenneth D. Stark Date
 License number 10898
 My license renewal date is December 31, 2017
 Pages or sheets covered by this seal. 1

List Corners to be indexed

| Corner | Section | Township | Range |
|--------------------------------------|---------|----------|-------|
| NW CORNER | 18 | 94N | 11W |
| N ¹ / ₄ CORNER | 18 | 94N | 11W |

PPC - Pink Plastic Cap

DOCUMENT NO. 02535 FILED FOR RECORD THE 19th DAY OF JUNE STATE OF IOWA, CHICKASAW COUNTY.
 RECORDING FEE \$ 5.00 June, 1992 AT 8:51 By Mary C. Murray Recorder
 TRANSFER FEE - \$ --- O'CLOCK A. M. BOOK 149 DEED PAGE 463 BY MARY C. MURRAY Day
 SLSI 9-90

UNITED STATES PUBLIC LAND SURVEY CORNER CERTIFICATE
OF

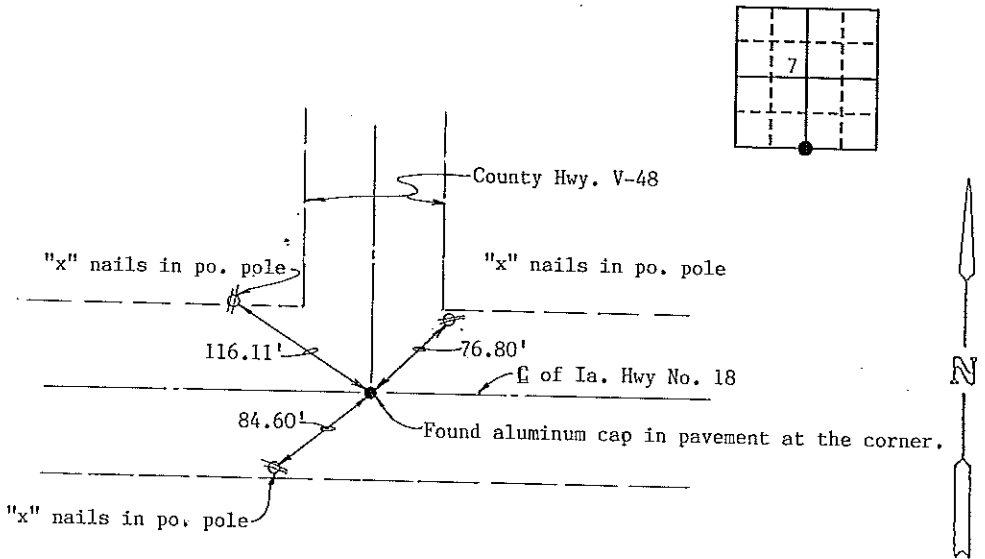
Land Survey Monuments situated in Section 7, Township 94 North, Range 11 West, of the Fifth Principal Meridian, Chickasaw County, Iowa.
 Previously recorded in no corner certificate on file in County Recorder's Office.
(book, page, document number, etc.)

(Show reason for preparing this certificate, the evidence and detailed procedures used in establishing the corner positions and monumentation found or placed.)

Monument Description and Remarks: Found aluminum cap in pavement at the corner.

PLAN - VIEW

(Show a minimum of three reference ties to durable physical objects, relevant monuments and physical conditions that will enable recovery of the corner.)

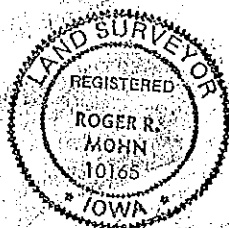


Cor A

I hereby certify that the survey work was completed and this certificate was prepared by me or under my direct personal supervision and that I am a duly registered land surveyor under the laws of the state of Iowa.

Signature: Roger R. Mohn
 Name typed or printed: Roger R. Mohn
 Date: June 15, 1992 Reg. No. 10165

SEAL



| Comers | List Corners to be Indexed Section | Twsp | Range |
|----------------|------------------------------------|------|-------|
| South 1/4 Cor. | 7 | 94N | 11W |

*Corners A & B 7-9-1-11
 Placed in Tax Books
 6/25/92*