

PREPARED BY / RETURN TO: KENNETH D. STARK IOWA DEPARTMENT OF TRANSPORTATION 1420 4th ST. SE WASON CITY, IA 50401 641-423-7534

**UNITED STATES PUBLIC LAND SURVEY CORNER CERTIFICATE**

OF

Land Survey Monuments situated in Section 17, Township 94N, Range 11W  
 of the Fifth Principal Meridian, CHICKASAW County, Iowa.

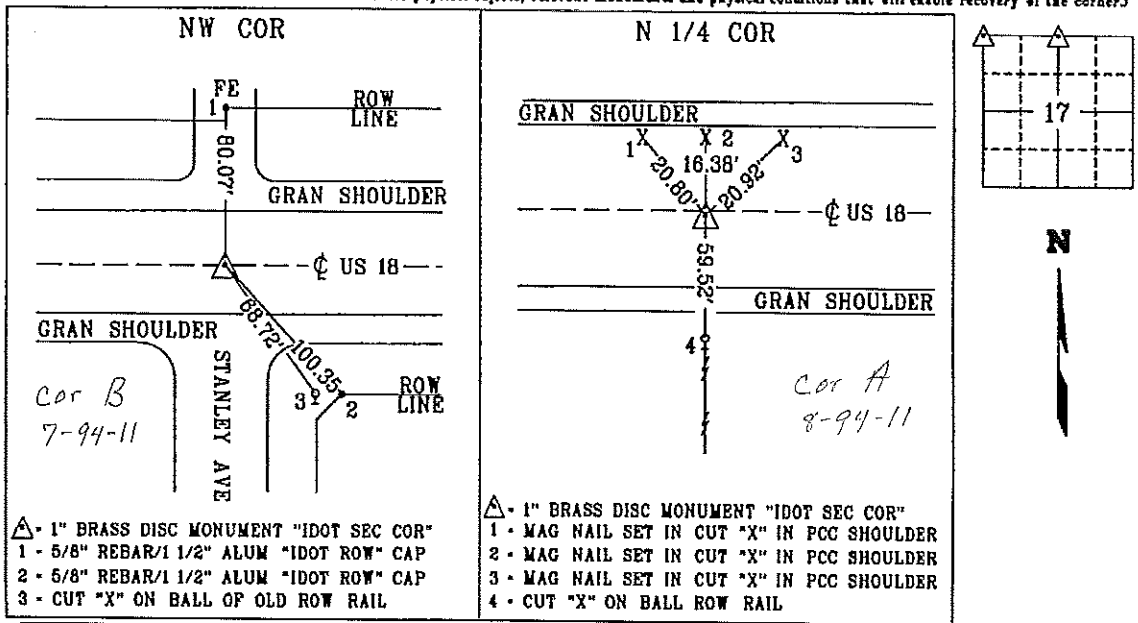
Previously recorded in \*2001-2823 & BOOK 172, PAGE 295 in County Recorder's Office.  
(book, page, document number, etc.)

(Show reason for preparing this certificate, the evidence and detailed procedures used in establishing the corner positions and monumentation found or placed.)

Monument Description and Remarks:  
NW COR - REPLACED PREVIOUSLY FOUND 1/2" REBAR & 2" ALUMINUM CAP \*15525 IN CORE HOLE WITH A 1" BRASS DISC MONUMENT "IDOT SEC COR" AFTER PCC OVERLAY PROJECT NHSX-018-7(58)--3H-19 PER PREVIOUS CERT \*2002-2823. REASON FOR CERT: CHANGE TO MONUMENT.  
N 1/4 COR- REPLACED PREVIOUSLY FOUND 2 1/2" IDOT ALUMINUM DISC MONUMENT IN ACC WITH A 1" BRASS DISC MONUMENT "IDOT SEC COR" 0.76' SOUTH OF C IN PCC PAVEMENT AFTER PCC OVERLAY PROJECT NHSX-018-7(58)--3H-19 PER PREVIOUS CERT BOOK 172, PAGE 295.  
REASON FOR CERT: CHANGE TO MONUMENT.

**PLAN - VIEW**

(Show a minimum of three reference ties to durable physical objects, relevant monuments and physical conditions that will enable recovery of the corner.)



**LICENSED LAND SURVEYOR**  
 KENNETH D. STARK  
 10898  
 IOWA

I hereby certify that this land surveying document was prepared and the related survey work was performed by me or under my personal supervision and that I am a duly licensed Land Surveyor under the laws of the state of Iowa.  
*Kenneth D. Stark* 07-02-13  
 Kenneth D. Stark Date  
 License number 10898  
 My License renewal date is December 31, 2013  
 Pages or sheets covered by this seal. 1

List Corners to be Indexed

Corner	Section	Township	Range
NW CORNER	17	94N	11W
N 1/4 CORNER	17	94N	11W

TIED: DM DRAWING

Section 7-94-11  
As referred to in  
Engg Tie Book

FILED 2001-2823  
RECORDER'S OFFICE  
CHICKASAW COUNTY, IOWA  
2001 DEC 26 AM 9 14  
CINDY MESSERSMITH  
COUNTY RECORDER

TEKIPPE ENGINEERING, P.C., 128 South Vine Street, West Union, Iowa 52175 Phone (663) 422-6131

UNITED STATES PUBLIC LAND SURVEY CORNER CERTIFICATE

OF  
Land Survey Monuments situated in Section 18<sup>7</sup>, Township 94 North, Range  
11 West of the Fifth Principal Meridian, CHICKASAW County, Iowa.  
Previously recorded in Book 156, Page 97 in County Recorder's Office.  
(book, page, document number, etc.)

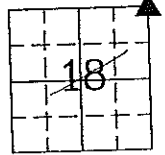
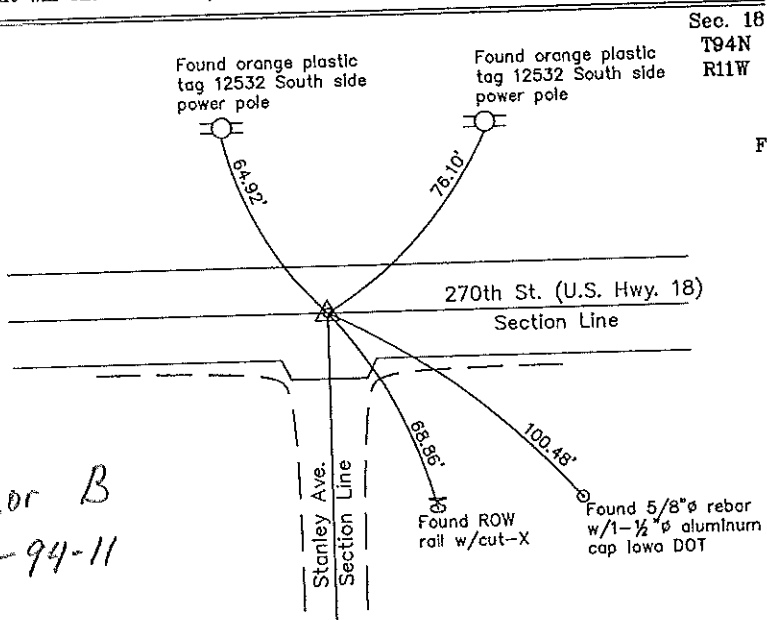
(Show reason for preparing this certificate, the evidence and detailed procedures used in establishing the corner positions and monumentation found or placed.)

Monument Description and Remarks: NE Corner Section 18 T94N R11W: Set 1/2"Ø rebar w/2"Ø aluminum cap PLS 15525 from reference ties indicated on the previous Section Corner Certificate recorded in the Chickasaw County Recorder's Office in Book 156, Page 97. The Iowa DOT aluminum monument noted in the previous Section Corner Certificate was missing.

PLAN - VIEW

Project Number 01172.LS  
FB. 46 I PG. 41-43 *Cor. B*

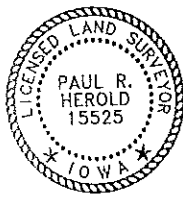
(Show a minimum of three reference ties to durable physical objects, relevant monuments and physical conditions that will enable recovery of the corner.)



Fredericksburg Twp

*Cor B  
7-94-11*

NE Corner Section 18 T94N R11W  
Set 1/2"Ø rebar w/2"Ø aluminum cap PLS 15525



I hereby certify that this land surveying document was prepared and the related survey work was performed by me or under my direct personal supervision and that I am a duly licensed Land Surveyor under the laws of the State of Iowa.  
*Paul R. Herold 12-21-01*  
Paul R. Herold Date  
License number 15525  
My license renewal date is December 31, 2002.  
Sheets covered by this seal: Individual

List Corners to be Indexed			
Corners	Section	Twp.	Range
NE	18	94N	11W

*Entered 1-10-02*

*County Engineer Copy*

UNITED STATES PUBLIC LAND SURVEY CORNER CERTIFICATE

Section 7-94-11  
As referred to in  
Engr. Tr. Book

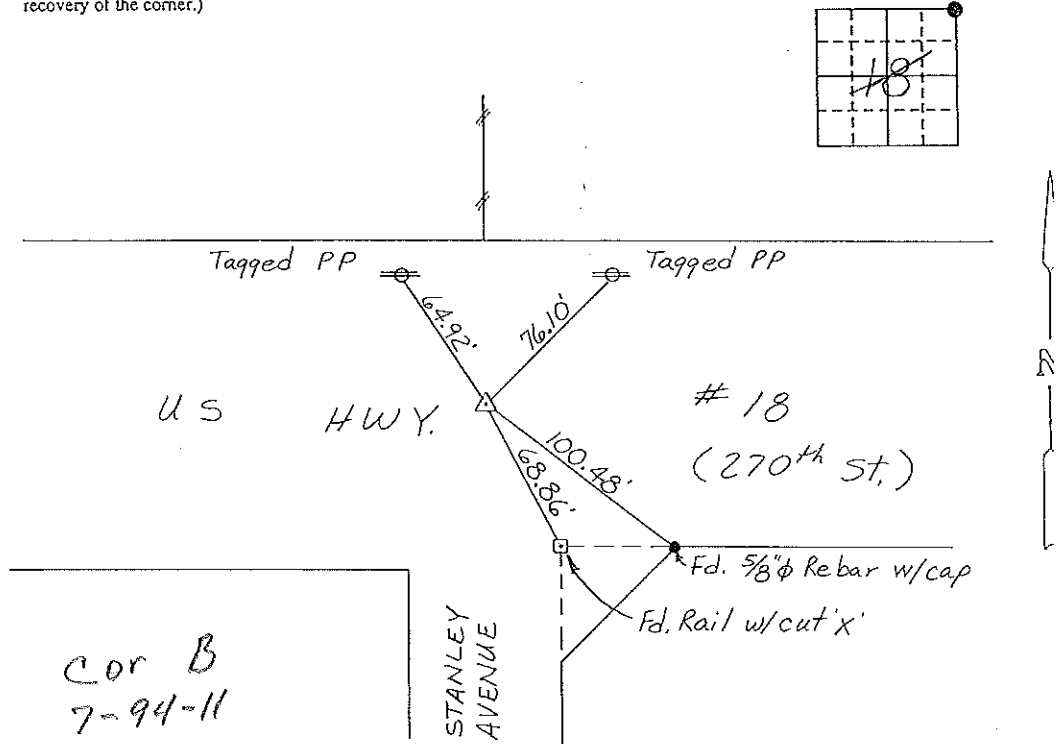
OF  
Land Survey Monuments situated in Section 18<sup>7</sup>, Township 94 NORTH, Range  
11 WEST, of the Fifth Principal Meridian, CHICKASAW County, Iowa.  
Previously recorded in NONE in County Recorder's Office.  
(book, page, document number, etc.)

(Show reason for preparing this certificate, the evidence and detailed procedures used in establishing the corner positions and monumentation found or placed.)

Monument Description and Remarks: NE CORNER, SECTION 18-94N-R11W:  
Found IDOT Aluminum Monument.

PLAN - VIEW

(Show a minimum of three reference ties to durable physical objects, relevant monuments and physical conditions that will enable recovery of the corner.)



Cor B  
7-94-11

I hereby certify that the survey work was completed and this certificate was prepared by me or under my direct personal supervision and that I am a duly registered land surveyor under the laws of the state of Iowa.

Signature: Gary L. Casady  
Name typed or printed: Gary L. Casady

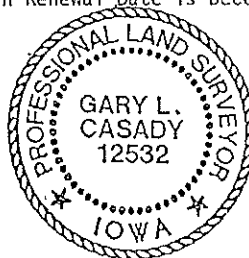
Date: 9-26-94 Reg. No. 12532

My Registration Renewal Date is December 31, 1994

Comers	Section	Twp	Range
NE	18	94N	11W

Corner B 7-94-11  
Placed in the  
Book 10/21/94

SEAL



# UNITED STATES PUBLIC LAND SURVEY CORNER CERTIFICATE

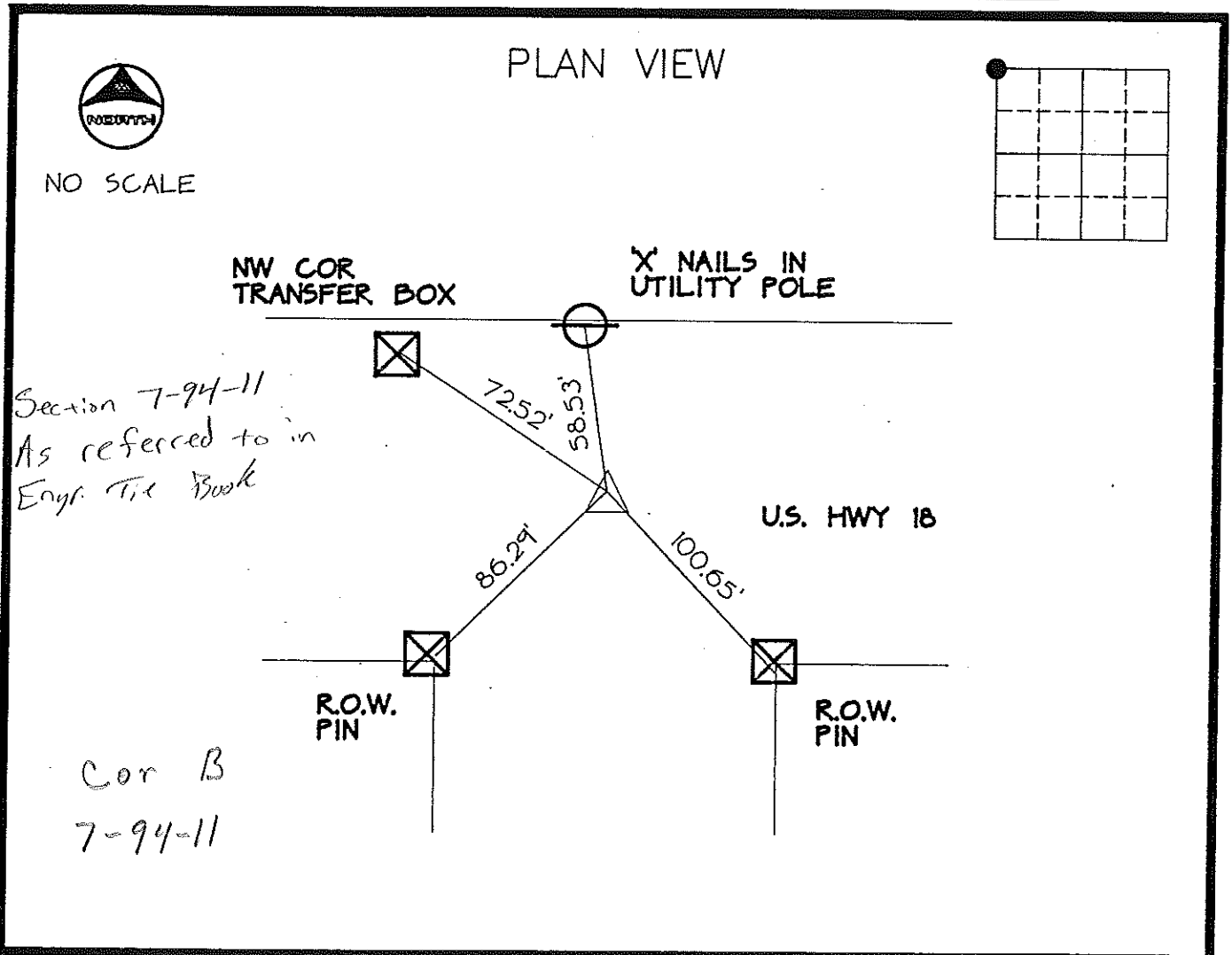
SECTION 17 <sup>7</sup>, TOWNSHIP 94, RANGE 11 OF THE 5TH. P.M.  
 IN CHICKASAW COUNTY, IOWA

CORNER: NW COR NW 1/4  
 DESCRIPTION AND REMARKS:

FOUND ALUMINUM CORE

*Placed in  
Tie Book 9/91  
JFM*

PREVIOUSLY RECORDED IN BOOK \_\_\_\_\_, PAGE \_\_\_\_\_



CERTIFICATION:  
 I HEREBY CERTIFY THAT THIS MAP, PLAT, OR SURVEY WAS MADE BY  
 ME OR UNDER MY DIRECT PERSONAL SUPERVISION AND THAT I AM A  
 DULY REGISTERED LAND SURVEYOR UNDER THE LAWS OF THE STATE  
 OF IOWA.

*Thomas V. Craft*  
 THOMAS V. CRAFT REG. L.S. NO. 7549

DATE: 4/17/91

INDEXING ALTERNATIVES			
CORNER	SECTION	TWP	RANGE
NE	18	94	11
SE	7	94	11
SW	8	94	11