

Chickasaw Co. Recorder
 Cindy Messersmith
Fee Book 2008-0109
 01/17/2008 @1138AM
 SCC SEC COR CERT # Pages: 1
 Book: Page: \$7.00
 Total Fees:

Herold - Reicks Surveying, 25 1/2 East Main Street, Suite 204, New Hampton, IA 50659, Ph. 641-354-2725

UNITED STATES PUBLIC LAND SURVEY CORNER CERTIFICATE

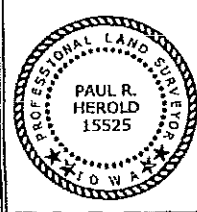
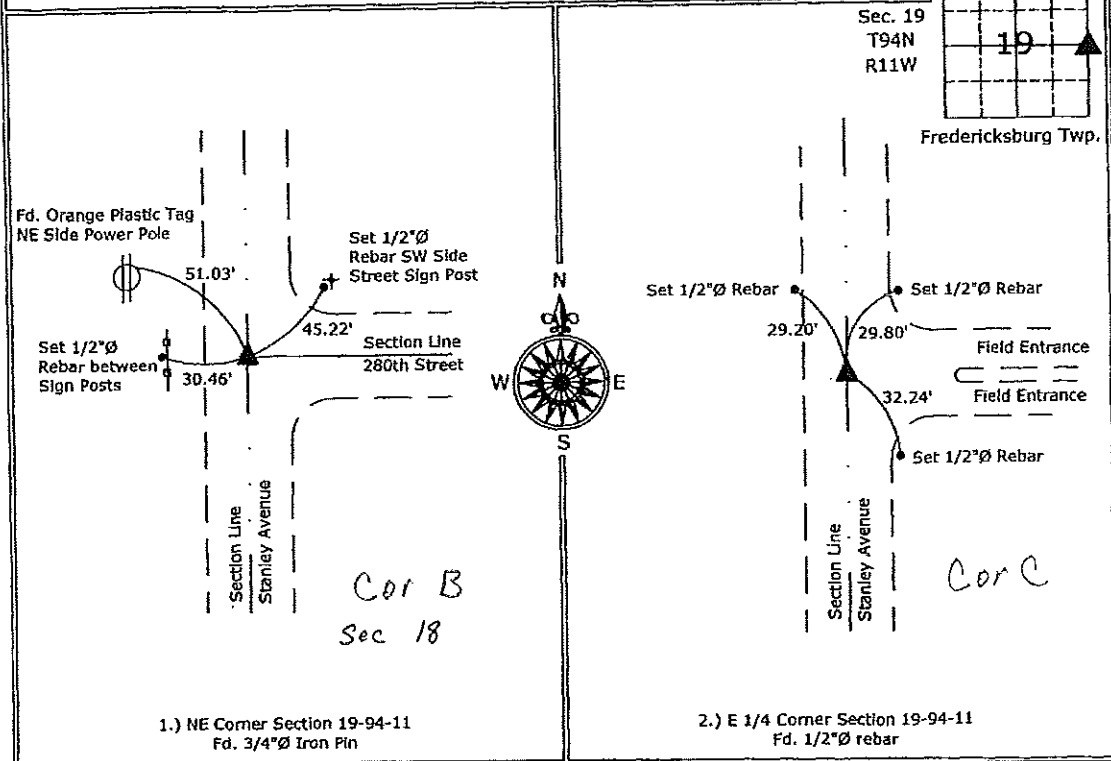
Land Survey Monuments situated in:
 Section 19, Township 94 North, Range 11 West of the Fifth Principal Meridian,
Chickasaw County, Iowa. Previously recorded in 1.) Bk. 161, Pg. 183
 In County Recorder's Office. 2.) None

(Show reason for preparing this certificate, the evidence and detailed procedures used in establishing the corner positions and monumentation found or placed.)

Monument Description and Remarks:
 1.) NE Corner Section 19-94-11: Fd. 3/4"Ø iron pin from information on the previous Section Corner Certificate, 2 of the original ties are missing, checked the remaining tie and added 2 new ties.
 2.) E 1/4 Corner Section 19-94-11: Fd. 1/2"Ø rebar from information obtained from the County Engineer's Office in Field Book "F'Burg Twp. Corner Ties", Section 19, Corner "C".

PLAN - VIEW

(Show a minimum of three reference ties to durable physical objects, relevant monuments and physical conditions that will enable recovery of the corner.)



I hereby certify that this land surveying document was prepared and the related survey work was performed by me or under my direct personal supervision and that I am a duly licensed Land Surveyor under the laws of the State of Iowa.
Paul R. Herold 1-17-08
 Paul R. Herold Date:
 License number 15525
 My license renewal date is December 31, 2008.
 Sheets covered by this seal: Individual sheet only

List Corners to be Indexed			
Corners	Section	Twp.	Range
NE	19	94	11
E 1/4	19	94	11

Project Number: 2007-135
 FB: Chickasaw Co. 1, Pgs. 56-58

File: S:\Projects\2007\2007-135.dwg\2007-135.dwg, 1/17/2008 8:29:56 AM