

# UNITED STATES PUBLIC LAND SURVEY CORNER CERTIFICATE

OF

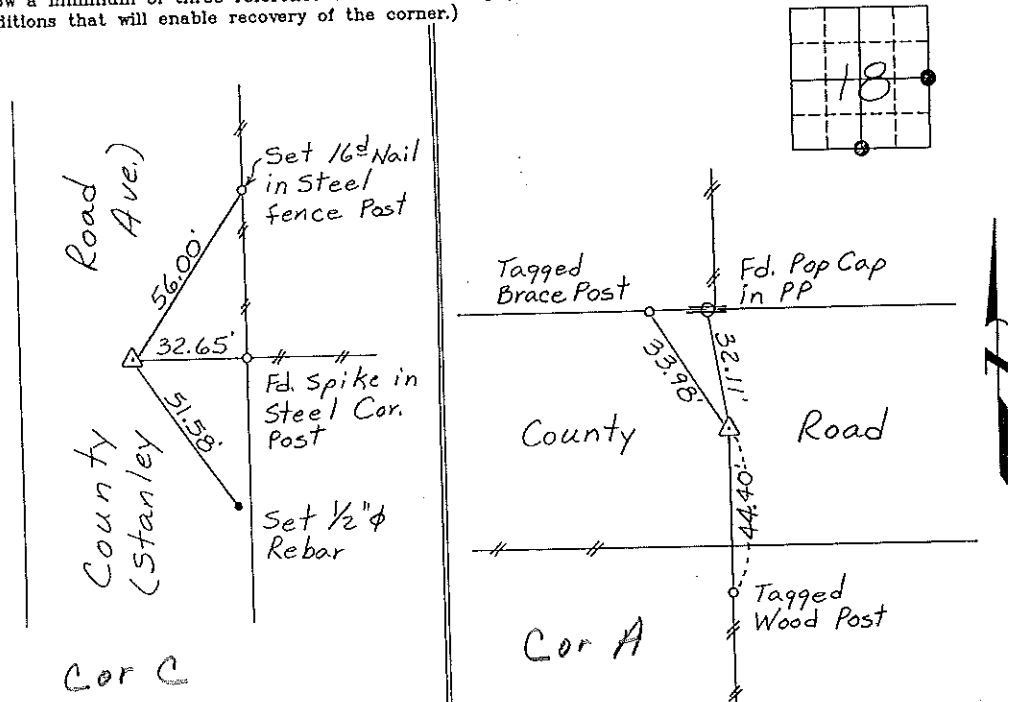
Land Survey Monuments situated in Section 18, Township 94 North, Range 11 West, of the Fifth Principal Meridian, CHICKASAW County, Iowa.  
 Previously recorded in NONE in County Recorder's Office.  
(book, page, document number, etc.)

(Show reason for preparing this certificate, the evidence and detailed procedures used in establishing the corner positions and monumentation found or placed.)

Monument Description and Remarks: E 1/4 CORNER, SECTION 18-T94N-R11W:  
Found 50<sup>th</sup> Spike.  
S 1/4 CORNER, SECTION 18-T94N-R11W: Found 3/4" square Iron  
Pin.

## PLAN - VIEW

(Show a minimum of three reference ties to durable physical objects, relevant monuments and physical conditions that will enable recovery of the corner.)



E 1/4 CORNER, SECTION 18-T94N-R11W

S 1/4 CORNER, SECTION 18-T94N-R11W

I hereby certify that the survey work was completed and this certificate was prepared by me or under my direct personal supervision and that I am a duly registered land surveyor under the laws of the state of Iowa.

Signature: Gary L. Casady  
 Gary L. Casady

Date: 10-27-94 Reg. No. 12532  
 My Registration Renewal Date is December 31, 1994

Seal



List Corners to be Indexed			
Corners	Section	Twp.	Range
E 1/4	18	94N	11W
<small>Cor C-18-94-11</small>			
S 1/4	18	94N	11W
<small>Cor A 18-94-11</small>			

*Placed in tie book 11/94*

"County Engineer's Copy"