

Chickasaw Co. Recorder
Cindy Messersmith
Fee Book 2008-0109

01/17/2008 @1138AM
SCC SEC COR CERT # Pages: 1
Book: Page: \$7.00
Total Fees:

Herold - Reicks Surveying, 25 1/3 East Main Street, Suite 204, New Hampton, IA 50659, Ph. 641-354-2705

UNITED STATES PUBLIC LAND SURVEY CORNER CERTIFICATE

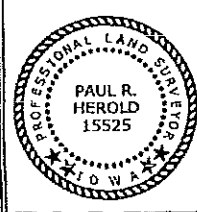
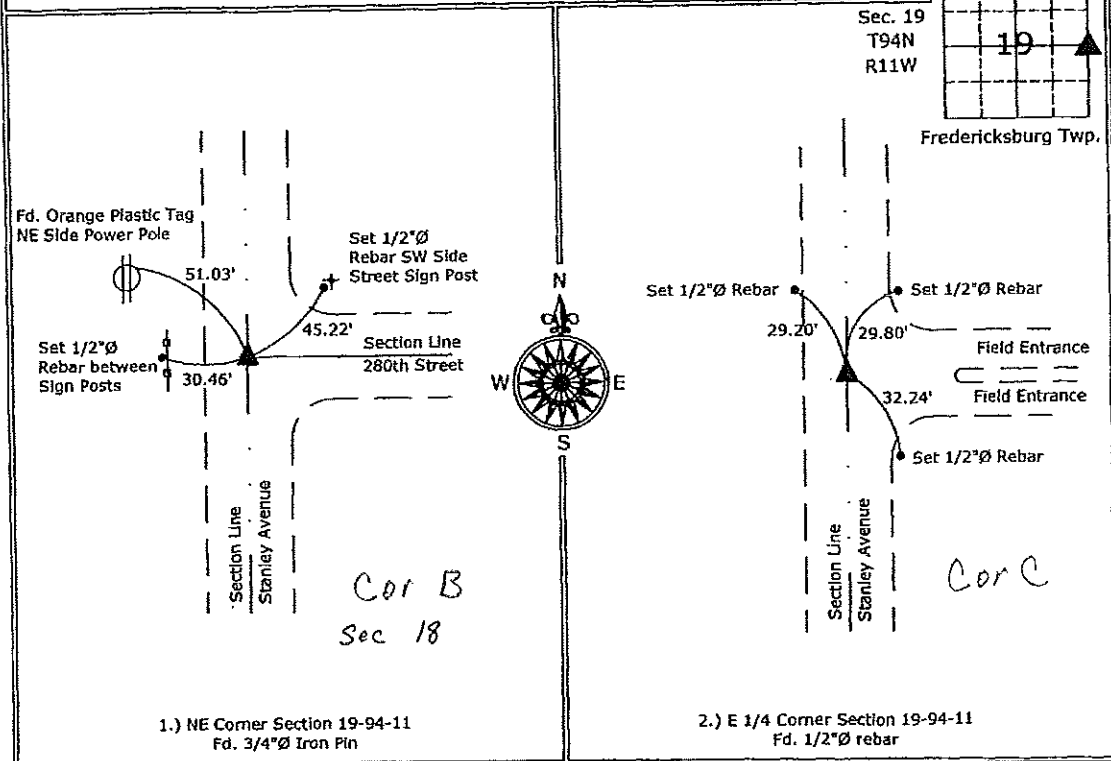
Land Survey Monuments situated in:
Section 19, Township 94 North, Range 11 West of the Fifth Principal Meridian,
Chickasaw County, Iowa. Previously recorded in 1.) Bk. 161, Pg. 183
In County Recorder's Office. 2.) None

(Show reason for preparing this certificate, the evidence and detailed procedures used in establishing the corner positions and monumentation found or placed.)

- Monument Description and Remarks:
- 1.) NE Corner Section 19-94-11: Fd. 3/4"Ø iron pin from information on the previous Section Corner Certificate, 2 of the original ties are missing, checked the remaining tie and added 2 new ties.
 - 2.) E 1/4 Corner Section 19-94-11: Fd. 1/2"Ø rebar from information obtained from the County Engineer's Office in Field Book "F'Burg Twp. Corner Ties", Section 19, Corner "C".

PLAN - VIEW

(Show a minimum of three reference ties to durable physical objects, relevant monuments and physical conditions that will enable recovery of the corner.)



I hereby certify that this land surveying document was prepared and the related survey work was performed by me or under my direct personal supervision and that I am a duly licensed Land Surveyor under the laws of the State of Iowa.

Paul R. Herold 1-17-08
Paul R. Herold Date:
License number 15525
My license renewal date is December 31, 2008.
Sheets covered by this seal: Individual sheet only

List Corners to be Indexed			
Corners	Section	Twp.	Range
NE	19	94	11
E 1/4	19	94	11

Project Number: 2007-135
FB: Chickasaw Co. 1, Pgs. 56-58

File: S:_Projects\2007\2007-135.dwg\2007-135.dwg, 1/17/2008 8:29:56 AM

Section 18-94-11
 As referred to in
 Eng'r Tie Book

TeKIPPE ENGINEERING, P.C., 128 South Vine Street, West Union, Iowa 52176 Phone (319) 422-5131

UNITED STATES PUBLIC LAND SURVEY CORNER CERTIFICATE

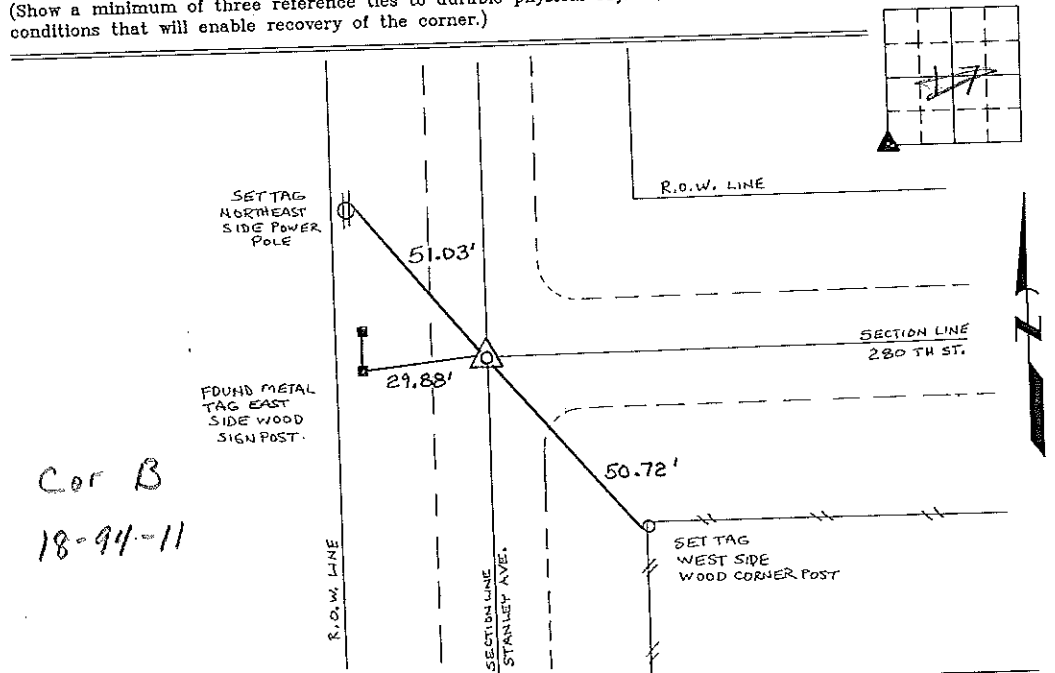
OF
 Land Survey Monuments situated in Section 17¹⁸, Township 94 North, Range
11 West, of the Fifth Principal Meridian, CHICKASAW County, Iowa.
 Previously recorded in NONE in County Recorder's Office.
(book, page, document number, etc.)

(Show reason for preparing this certificate, the evidence and detailed procedures used in establishing the corner positions and monumentation found or placed.)

Monument Description and Remarks: SW CORNER SECTION 17 T94N R11W: FOUND
3/4" Ø IRON PIN FROM INFORMATION OBTAINED FROM THE COUNTY ENGINEERS OFFICE
IN FIELD BOOK "FREDERICKSBURG TWP. CORNER TIES"

PLAN - VIEW

(Show a minimum of three reference ties to durable physical objects, relevant monuments and physical conditions that will enable recovery of the corner.)



Cor B
 18-94-11

I hereby certify that the survey work was completed and this certificate was prepared by me or under my direct personal supervision and that I am a duly registered land surveyor under the laws of the state of Iowa.

Signature: Lyle G. TeKippe
 Lyle G. TeKippe

Date: 6-20-96 Reg. No. 7060
 My Registration Renewal Date is December 31, 1998

Seal



List Corners to be indexed			
Corners	Section	Twp.	Range
SW	17	94N	11W

Cor B 18-94-11

Placed in tie book
 6/27/96
 JPM

"County Engineer's Copy"