

Section 20-94-11
As referred to in
Engr. Tie Book

FILED 2001-1795
RECORDER'S OFFICE
CHICKASAW COUNTY, IOWA

2001 AUG 21 AM 10 30

CINDY MESSERSMITH
COUNTY RECORDER

TeKIPPE ENGINEERING, P.C., 128 South Vine Street, West Union, Iowa 52175 Phone (563) 422-6131

UNITED STATES PUBLIC LAND SURVEY CORNER CERTIFICATE

OF 20
Land Survey Monuments situated in Section 21, Township 94 North, Range
11 West of the Fifth Principal Meridian, CHICKASAW County, Iowa.
Previously recorded in none in County Recorder's Office.
(book, page, document number, etc.)

(Show reason for preparing this certificate, the evidence and detailed procedures used in establishing the corner positions and monumentation found or placed.)

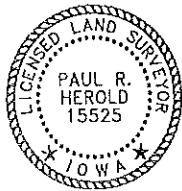
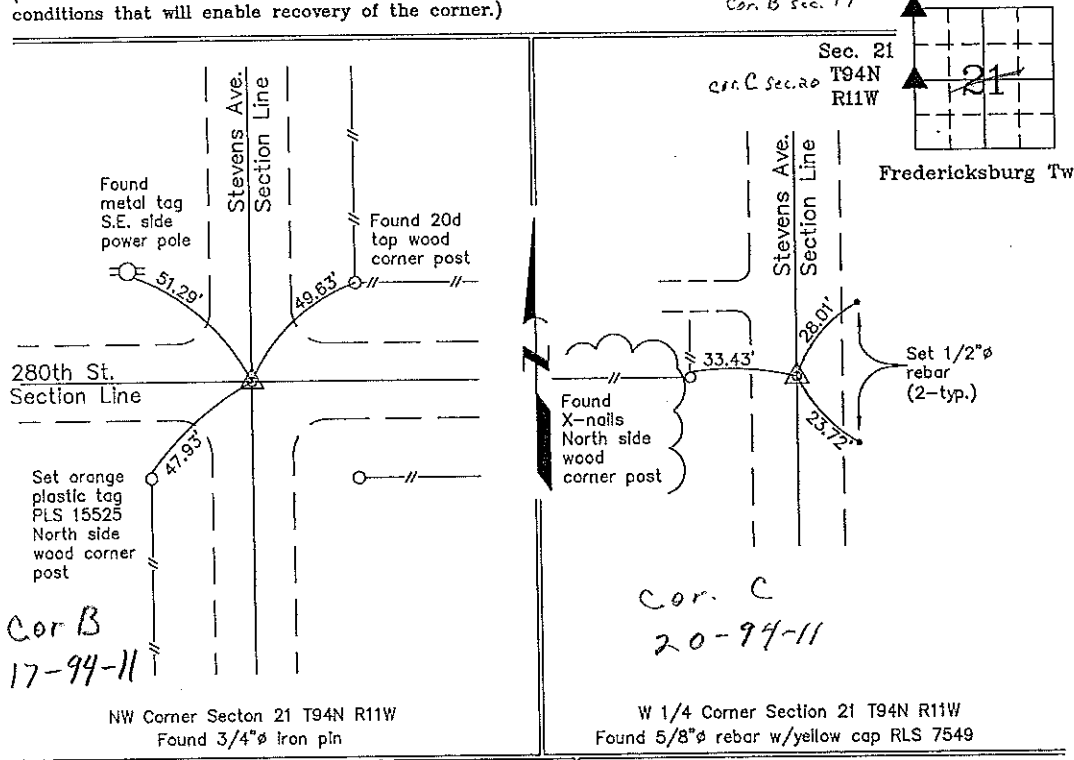
Monument Description and Remarks: NW Corner Section 21 T94N R11W: Found 3/4"Ø iron pin with information obtained from the Chickasaw County Engineer's Office in the Field Book Fredericksburg Twp. Corner Ties, Section 17, Corner B.

W 1/4 Corner Section 21 T94N R11W: Found 5/8"Ø rebar w/yellow plastic cap RLS 7549 with information obtained from the Chickasaw County Engineer's Office in the Field Book Fredericksburg Twp. Corner Ties, Section 20, Corner C.

PLAN - VIEW

(Show a minimum of three reference ties to durable physical objects, relevant monuments and physical conditions that will enable recovery of the corner.)

Project Number 011211S
FR. NRCS 2 PG. 4-8



I hereby certify that this land surveying document was prepared and the related survey work was performed by me or under my direct personal supervision and that I am a duly licensed Land Surveyor under the laws of the State of Iowa.

Paul R. Herold 8-20-01
Paul R. Herold Date
License number 15525
My license renewal date is December 31, 2002.
Sheets covered by this seal: Individual

List Corners to be Indexed			
Corners	Section	Twp.	Range
NE	21	94	11
W 1/4	21	94	11

Filed 9-11-01

County Engineer's
Copy