

Section 21-94-11
As referred to in
Eng. T.C. Book

TekIPPE ENGINEERING, P.C., 128 South Vine Street, West Union, Iowa 52175 Phone (319) 422-6131

UNITED STATES PUBLIC LAND SURVEY CORNER CERTIFICATE

OF 21

Land Survey Monuments situated in Section 22, Township 94 North, Range 11 West, of the Fifth Principal Meridian, CHICKASAW County, Iowa.
Previously recorded in NONE in County Recorder's Office.
(book, page, document number, etc.)

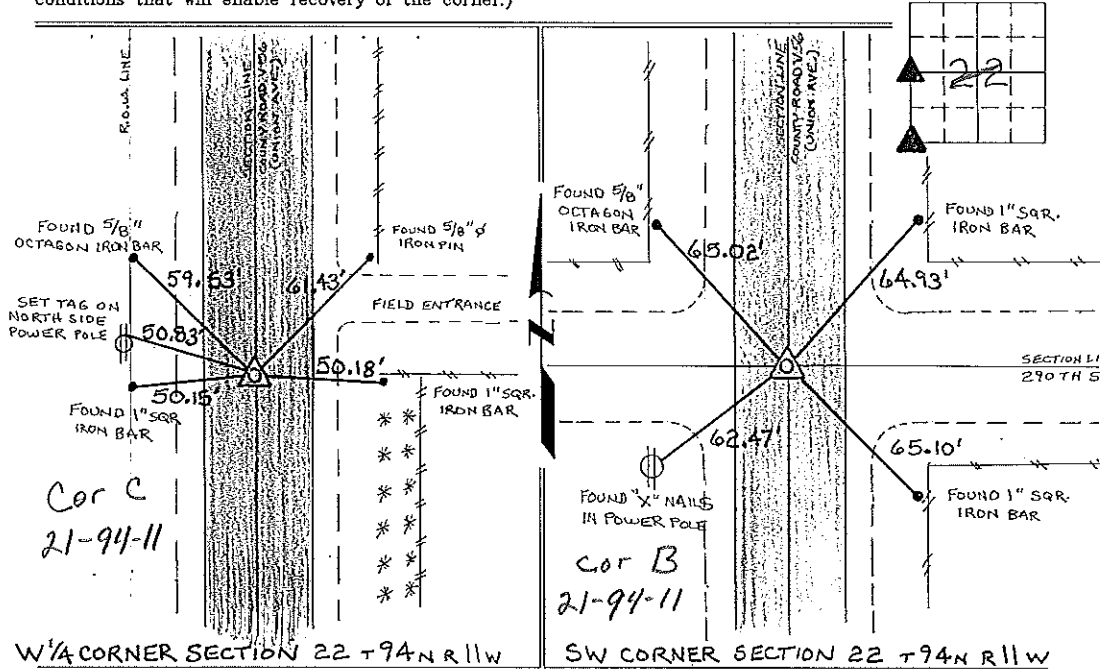
(Show reason for preparing this certificate, the evidence and detailed procedures used in establishing the corner positions and monumentation found or placed.)

Monument Description and Remarks: W 1/4 CORNER SECTION 22 T94N R11W:
CUT "X" IN P.C.C. PAVEMENT FROM TIES OBTAINED FROM THE COUNTY ENGINEERS OFFICE,
IN FIELD BOOK "FREDERICKSBURG TWP. CORNER TIES".

SW CORNER SECTION 22 T94N R11W: CUT "X" IN P.C.C. PAVEMENT FROM TIES OBTAINED
FROM THE COUNTY ENGINEERS OFFICE, IN FIELD BOOK "FREDERICKSBURG TWP. CORNER TIES".

PLAN - VIEW

(Show a minimum of three reference ties to durable physical objects, relevant monuments and physical conditions that will enable recovery of the corner.)



I hereby certify that the survey work was completed and this certificate was prepared by me or under my direct personal supervision and that I am a duly registered land surveyor under the laws of the state of Iowa.

Signature: Lyle G. Tekippe
Lyle G. Tekippe
Date: 4-5-96 Reg. No. 7060
My Registration Renewal Date is December 31, 1996



Corners	Section	Twp.	Range
W 1/4	22	94N	11W
Cor C	21-94-11		
SW	22	94N	11W
Cor B	21-94-11		

Place in tie Book
4/5/96