

FILED 2001 - 2430  
 RECORDER'S OFFICE  
 CHICKASAW COUNTY, IOWA  
*See #600*  
 2001 NOV 6 AM 8 49  
 GINDY MESSERSMITH  
 COUNTY RECORDER

TEKIPPE ENGINEERING, P.C., 128 South Vine Street, West Union, Iowa 52175 Phone (563) 422-5131

UNITED STATES PUBLIC LAND SURVEY CORNER CERTIFICATE

OF  
 Land Survey Monuments situated in Section 21, Township 94 North, Range 11 West of the Fifth Principal Meridian, CHICKASAW County, Iowa.  
 Previously recorded in none in County Recorder's Office.  
(book, page, document number, etc.)

(Show reason for preparing this certificate, the evidence and detailed procedures used in establishing the corner positions and monumentation found or placed.)

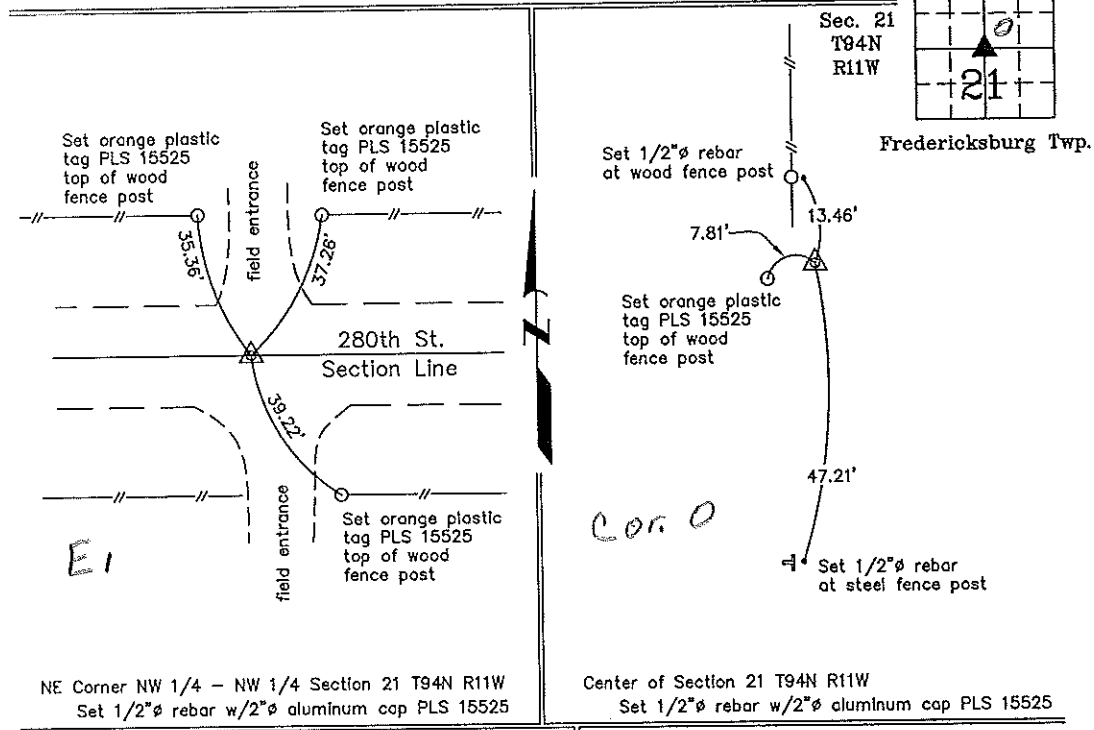
Monument Description and Remarks: NE Corner NW 1/4 - NW 1/4 Section 21 T94N R11W:  
Set 1/2"  $\phi$  rebar w/2"  $\phi$  aluminum cap PLS 15525 equidistant and on line between the NW Corner and the N 1/4 Corner.

Center of Section 21 T94N R11W: Set 1/2"  $\phi$  rebar w/2"  $\phi$  aluminum cap PLS 15525 at the intersection of the 1/4 Section Lines.

PLAN - VIEW

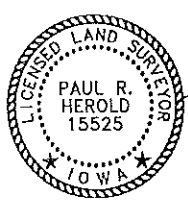
(Show a minimum of three reference ties to durable physical objects, relevant monuments and physical conditions that will enable recovery of the corner.)

Project Number 0112113  
 FB NCS 2 PG. 6-8



NE Corner NW 1/4 - NW 1/4 Section 21 T94N R11W  
 Set 1/2"  $\phi$  rebar w/2"  $\phi$  aluminum cap PLS 15525

Center of Section 21 T94N R11W  
 Set 1/2"  $\phi$  rebar w/2"  $\phi$  aluminum cap PLS 15525



I hereby certify that this land surveying document was prepared and the related survey work was performed by me or under my direct personal supervision and that I am a duly licensed Land Surveyor under the laws of the State of Iowa.

*Paul R. Herold* 11-5-01  
 Paul R. Herold Date  
 License number 15525  
 My license renewal date is December 31, 2002.  
 Sheets covered by this seal: Individual

List Corners to be Indexed			
Corners	Section	Twp.	Range
NE-NW-NW	21	94N	11W
Center	21	94N	11W

*Filed 11-14-01*

*County Engineer's Copy*