

UNITED STATES PUBLIC LAND SURVEY CORNER CERTIFICATE

OF

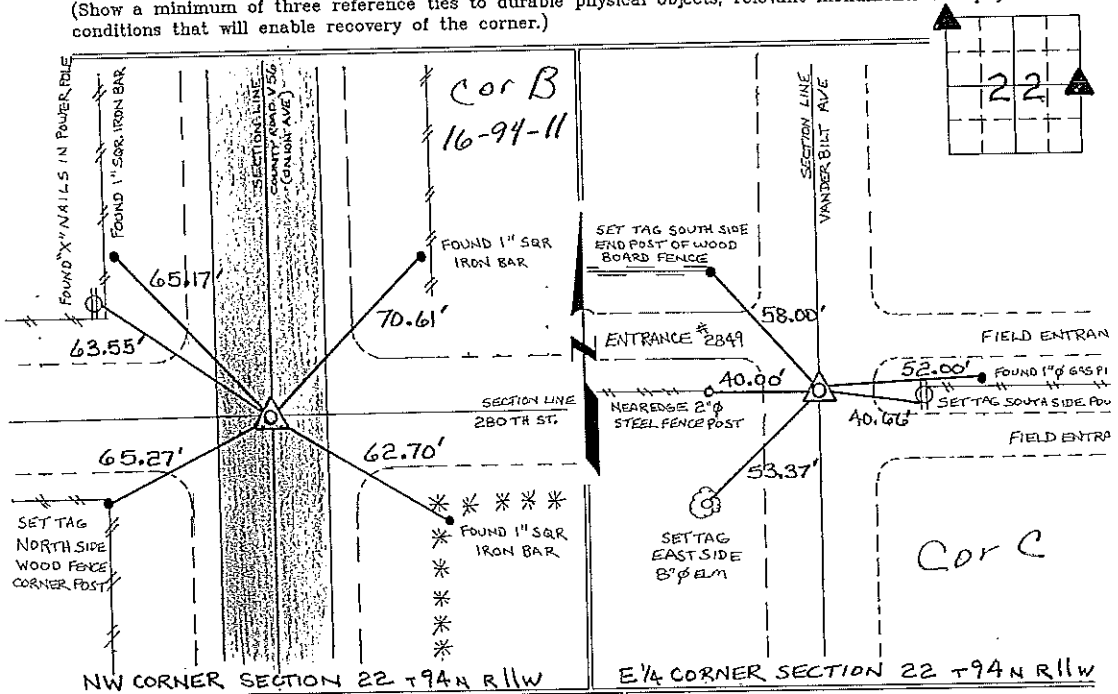
Land Survey Monuments situated in Section 22, Township 94 North, Range 11 West, of the Fifth Principal Meridian, CHICKASAW County, Iowa. Previously recorded in NW COR 149-336 / E 1/4 COR - NONE in County Recorder's Office. (book, page, document number, etc.)

(Show reason for preparing this certificate, the evidence and detailed procedures used in establishing the corner positions and monumentation found or placed.)

Monument Description and Remarks: NW CORNER SECTION 22 T94N R11W: CUT "X" IN P.C.C. PAVEMENT, AS SHOWN ON A SECTION CORNER CERTIFICATE MADE BY L.P. ERDMAN, RECORDED MAY 7, 1992, IN BOOK 149 PAGE 336, NOTHING WAS SET AT THE TEMPORARY LOCATION AS STATED ON THE CERTIFICATE.
E 1/4 CORNER SECTION 22 T94N R11W: FOUND 5/8" Ø IRON PIN 1.7 FEET DEEP FROM SINGLE TIE OBTAINED FROM THE COUNTY ENGINEER'S OFFICE, IN FIELD BOOK "FREDERICKSBURG CORNER TIES" RAISED CORNER w/ 1/2" Ø REBAR w/ CAP 7060.

PLAN - VIEW

(Show a minimum of three reference ties to durable physical objects, relevant monuments and physical conditions that will enable recovery of the corner.)



I hereby certify that the survey work was completed and this certificate was prepared by me or under my direct personal supervision and that I am a duly registered land surveyor under the laws of the state of Iowa.

Signature: Lyle G. TeKippe
 Lyle G. TeKippe

Date: 4-5-96 Reg. No. 7060
 My Registration Renewal Date is December 31, 1996

Seal



Corners	Section	Twp.	Range
NW	22	94N	11W
Cor B	16-94-11		
E 1/4	22	94N	11W
Cor C	22-94-11		

Place in Tie Box
4/5/96

DOCUMENT No. 12217 FILED FOR RECORD THE 7th DAY OF May STATE OF IOWA, CHICKASAW COUNTY.
 RECORDING FEE \$ 5.00 19 92 AT 11:49 Mary C. Murray Record
 TRANSFER FEE \$ - O'CLOCK A.M. BOOK 149 PAGE 336 BY MARY C. MURRAY Depy

UNITED STATES PUBLIC LAND SURVEY CORNER CERTIFICATE

OF

Land Survey Monuments situated in Section 15 ¹⁶, Township 94 North, Range 11 West, of the Fifth Principal Meridian, CHICKASAW County, Iowa.
 Previously recorded in Does Not Apply in County Recorder's Office.

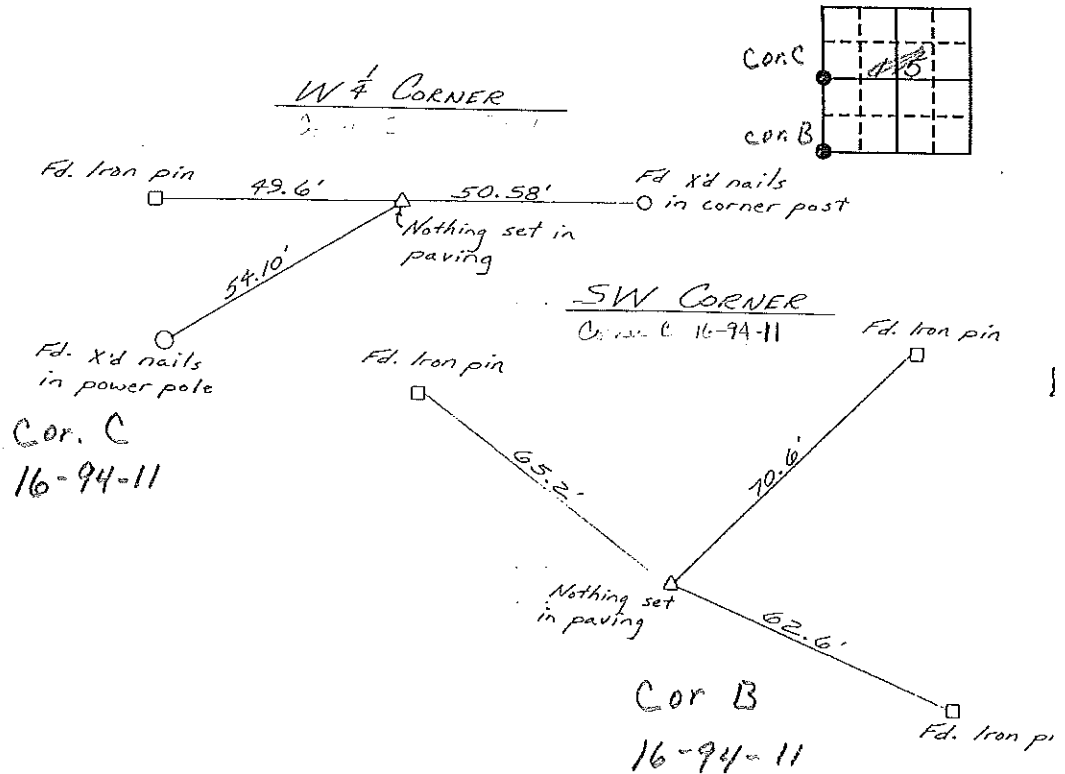
(Show reason for preparing this certificate, the evidence and detailed procedures used in establishing the corner positions and monumentation found or placed.)

Monument Description and Remarks: W 1/4 Set from county ties, Nothing set in paving. SW set from county ties, Nothing set in paving

Section 16-94-11
 As referred to in
 Engr. Tric Book

PLAN - VIEW

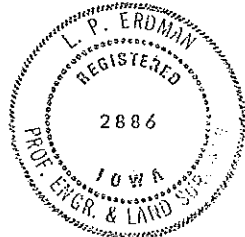
(Show a minimum of three reference ties to durable physical objects, relevant monuments and physical conditions that will enable recovery of the corner.)



I hereby certify that the survey work was completed and this certificate was prepared by me or under my direct personal supervision and that I am a duly registered land surveyor under the laws of the state of Iowa.

Signature: L. P. Erdman
 Name typed or printed: L. P. ERDMAN
 Date: 4-10-92 Reg. No. 2886

SEAL



Corners	List Corners to be Indexed	Section	Twp	Range
W 1/4	15	94	11	
SW	15	94	11	

Placed in
 Tric Book 5/92