

UNITED STATES PUBLIC LAND SURVEY CORNER CERTIFICATE

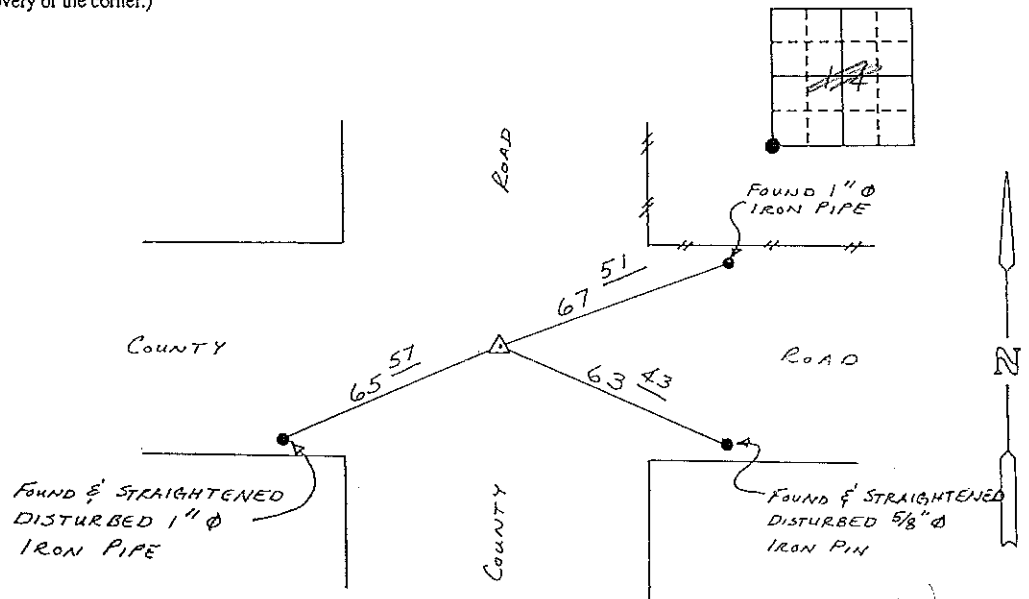
Section 15-94-11  
As referred to in  
Engr. TIC Book

Land Survey Monuments situated in Section 14 of Township 94N, Range 11W, of the Fifth Principal Meridian, CHICKASAW County, Iowa.  
Previously recorded in (None) in County Recorder's Office.

(Show reason for preparing this certificate, the evidence and detailed procedures used in establishing the corner positions and monumentation found or placed.)  
Monument Description and Remarks: FOUND 1/2" Ø IRON PIN 14" DEEP - RAISED WITH 1/2" Ø REBAR & CAP.

PLAN - VIEW

(Show a minimum of three reference ties to durable physical objects, relevant monuments and physical conditions that will enable recovery of the corner.)



Cor B  
15-94-11

Placed in TIC Book  
9/91 JFM

SW CORNER SECTION 14-T94N-R11W

I hereby certify that the survey work was completed and this certificate was prepared by me or under my direct personal supervision and that I am a duly registered land surveyor under the laws of the state of Iowa.

Signature: Lyle G. TeKippe  
Name typed or printed: Lyle G. TeKippe  
Date: 8-23-91 Reg. No. 7060

Corners	Section	Twp	Range
SW	14	94N	11W

SEAL

