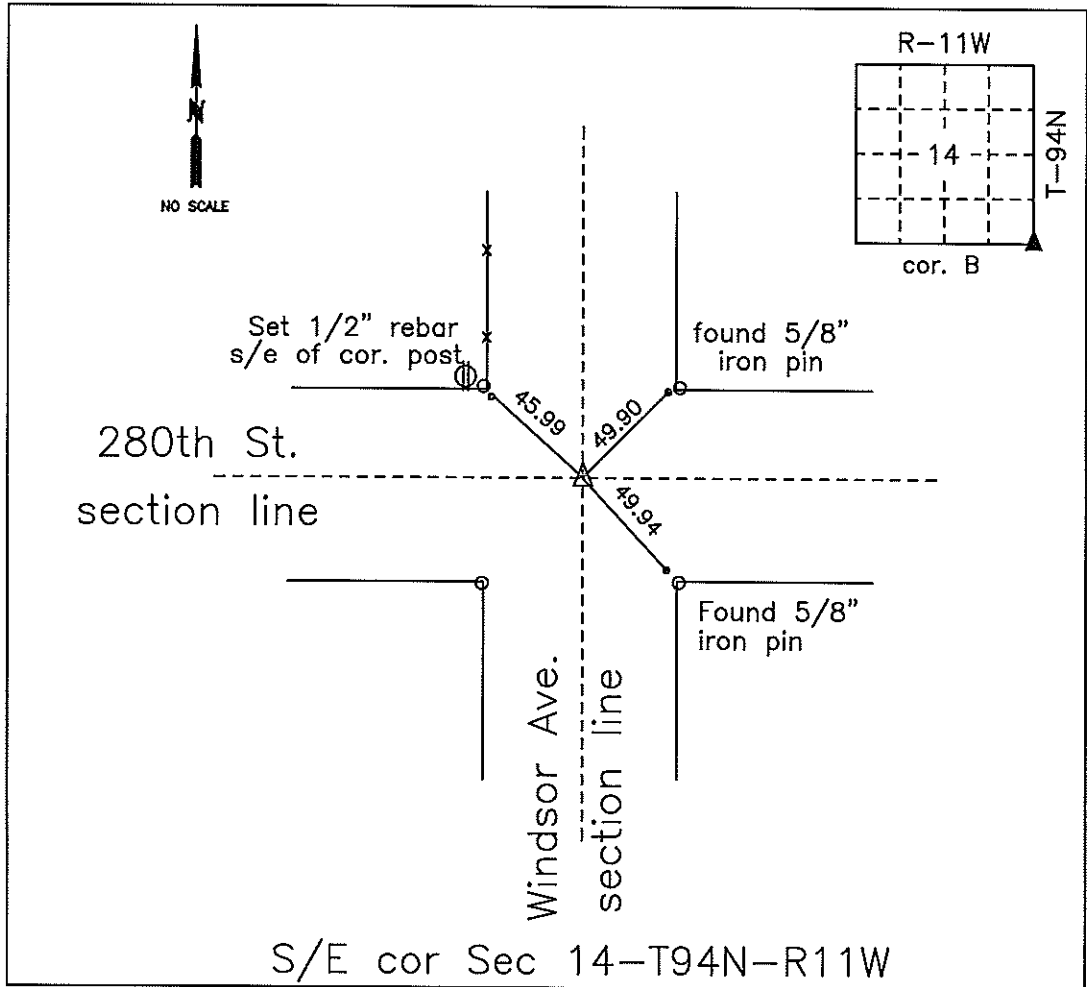


# COUNTY ENGINEER'S SECTION CORNER PRESERVATION RECORD

LAND SURVEY MONUMENT LOCATED IN SECTION 14, TOWNSHIP 94 N  
NORTH, RANGE 11 W, OF THE 5TH P.M. Chickasaw COUNTY, IOWA  
PREVIOUSLY RECORDED File 2001-2532



**MONUMENT DESCRIPTION AND NARRATIVE** Found 1/2" rebar in center of road in line with both roads north and south from TeKippe Engr (file 2001-2532) ties. 2 ties were missing.

Set 1/2" rebar with cap.

All ties are GPS surveyed.

I AM NOT A REGISTERED LAND SURVEYOR UNDER THE LAWS OF THE STATE OF IOWA

JIM FOSTER CHICKASAW CO. DATE: 10/30/13

Section 13-94-11  
 As referred to in  
 Engr. Tie Book

FILED 2001 - 2532  
 RECORDER'S OFFICE  
 CHICKASAW COUNTY, IOWA  
 2001 NOV 16 AM 9 00

CINDY MESSERSMITH  
 COUNTY RECORDER

TeKIPPE ENGINEERING, P.C., 128 South Vine Street, West Union, Iowa 52175 Phone (563) 422-6131

UNITED STATES PUBLIC LAND SURVEY CORNER CERTIFICATE  
 OF 13

Land Survey Monuments situated in Section 24, Township 94 North, Range 11 West of the Fifth Principal Meridian, CHICKASAW County, Iowa.  
 Previously recorded in none in County Recorder's Office.  
(book, page, document number, etc.)

(Show reason for preparing this certificate, the evidence and detailed procedures used in establishing the corner positions and monumentation found or placed.)

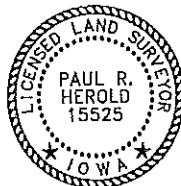
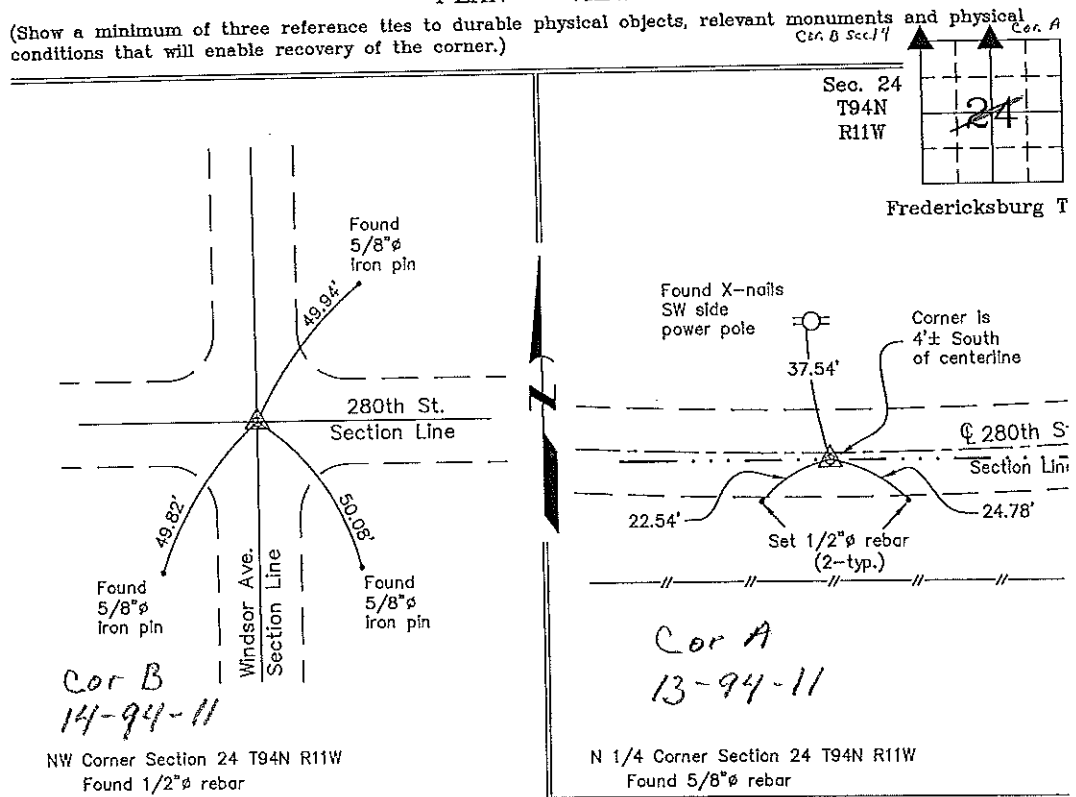
Monument Description and Remarks: NW Corner Section 24 T94N R11W: Found 1/2"Ø rebar with information obtained from the Chickasaw County Engineer's Office in Field Book Fredericksburg Twp. Corner Ties as Corner 'B', Section 14.

N 1/4 Corner Section 24 T94N R11W: Found 5/8"Ø rebar with information obtained from the Chickasaw County Engineer's Office in the Field Book Fredericksburg Twp. Corner Ties as Corner 'A', Section 13.

PLAN - VIEW

(Show a minimum of three reference ties to durable physical objects, relevant monuments and physical conditions that will enable recovery of the corner.)

Project Number 01222.15  
 FR 48 I PG. 28-40



I hereby certify that this land surveying document was prepared and the related survey work was performed by me or under my direct personal supervision and that I am a duly licensed Land Surveyor under the laws of the State of Iowa.

*Paul R. Herold* 11-15-01  
 Paul R. Herold Date  
 License number 15525  
 My license renewal date is December 31, 2002.  
 Sheets covered by this seal: Individual

List Corners to be Indexed			
Corners	Section	Twp.	Range
NW	24	94N	11W
N 1/4	24	94N	11W

Filed 11-16-01

County Engineer's Copy