

Section 13-94-11
As referred to in
Engr. Tie Book

FILE NO. 2003-1477
PAGE

2003 MAY 14 AM 9:25

CINDY MESSERSMITH
CHICKASAW CO. RECORDER

TeKIPPE ENGINEERING, P.C., 128 South Vine Street, West Union, Iowa 52176 Phone (563) 422-5131

UNITED STATES PUBLIC LAND SURVEY CORNER CERTIFICATE

OF 13

Land Survey Monuments situated in Section 24, Township 94 North, Range 11 West of the Fifth Principal Meridian, CHICKASAW County, Iowa.

Previously recorded in none in County Recorder's Office.
(book, page, document number, etc.)

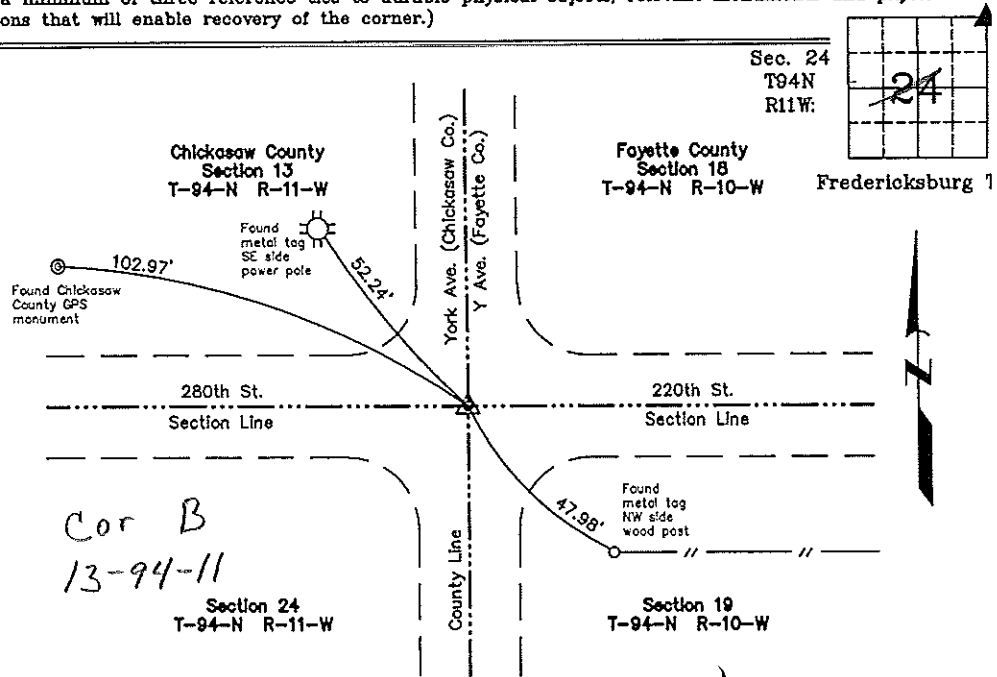
(Show reason for preparing this certificate, the evidence and detailed procedures used in establishing the corner positions and monumentation found or placed.)

Monument Description and Remarks: **NE Corner Section 24 T94N R11W: Found 1/2"Ø rebar, 2' deep, with information obtained from the Chickasaw County Engineer's Office in Field Book Corner Ties, Fredericksburg Twp., Section 13, Corner 'B'. Set 1/2"Ø rebar w/2"Ø aluminum cap PLS 15525 over found rebar.**

PLAN - VIEW

Project Number 03090.LS
FB. 46K PG. 7-9

(Show a minimum of three reference ties to durable physical objects, relevant monuments and physical conditions that will enable recovery of the corner.)



NE Corner Section 24 T94N R11W
Set 1/2"Ø rebar w/2"Ø aluminum cap PLS 15525



I hereby certify that this land surveying document was prepared and the related survey work was performed by me or under my direct personal supervision and that I am a duly licensed Land Surveyor under the laws of the State of Iowa.

Paul R. Herold 5-12-03
Paul R. Herold Date
License number 15525
My license renewal date is December 31, 2004.
Sheets covered by this seal: Individual

List Corners to be Indexed			
Corners	Section	Twp.	Range
NE	24	94N	11W

Filed 5-19-03

X:\Section Corners\Sec. 24\24-94-11e.dwg

County Engineer's
Copy